

PRODUCT- TJM SINGLE COMPRESSOR MOUNTING BRACKET

VEHICLE- TOYOTA 150 PRADO

- 7 SEAT MODELS WITH SUBWOOFER
- 5 SEAT MODELS

PART NUMBER- JBA-CB202S, JBA-CB202SKIT2, KIT3

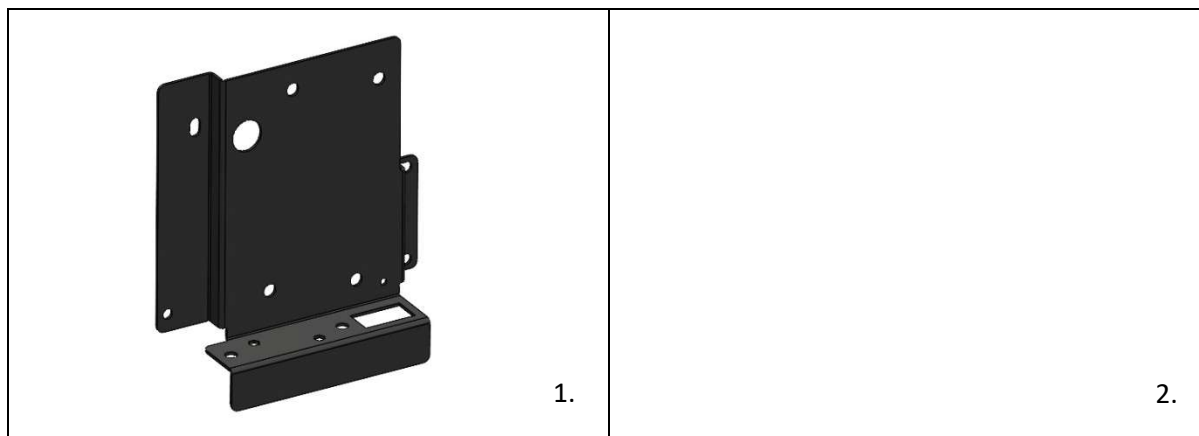
ESTIMATED FIT TIME

- | | |
|---|--------------|
| - PREPERATION AND MOUNTING OF COMPRESSOR AND BRACKET | 60 MINS |
| - REMOVAL AND REINSTALLATION OF SEATS AND QUARTER PANEL | 60 MINS |
| - REMOVAL AND REINSTALLATION OF DRAWERS (IF REQUIRED) | 120-150 MINS |
| - ELECTRICAL WIRING AND PLUMBING OF AIR OUTLETS | 90-120 MINS |

IMPORTANT NOTES

- READ INSTRUCTIONS CAREFULLY PRIOR TO FITMENT
- ENSURE 567 THREAD SEALANT IS APPLIED TO ALL AIR THREADS INSTALLED
- REFER TO TJM COMPRESSOR INSTALLATION INSTRUCTIONS FOR WIRING SPECIFICATIONS
- ENSURE THAT ALL TRIM CLIPS ARE REMOVED FROM THE VEHICLE WHEN REMOVING PANELS AND RE-INSERTED BACK INTO THE PANELS BEFORE RE-INSTALLATION (SEE STEPS 1.3.1-1.3.3).
- NITTO FITTING USED WITH KITS ARE SUPPLIED SEPERATLEY (NOT BY JBA) AVAILABLE THROUGH TJM STORES (P/N 013COMPFF01)
- ORIGINAL TOYOTA JACK WILL NEED TO BE RE-LOCATED AS COMPRESSOR IS FITTED TO THIS LOCATION

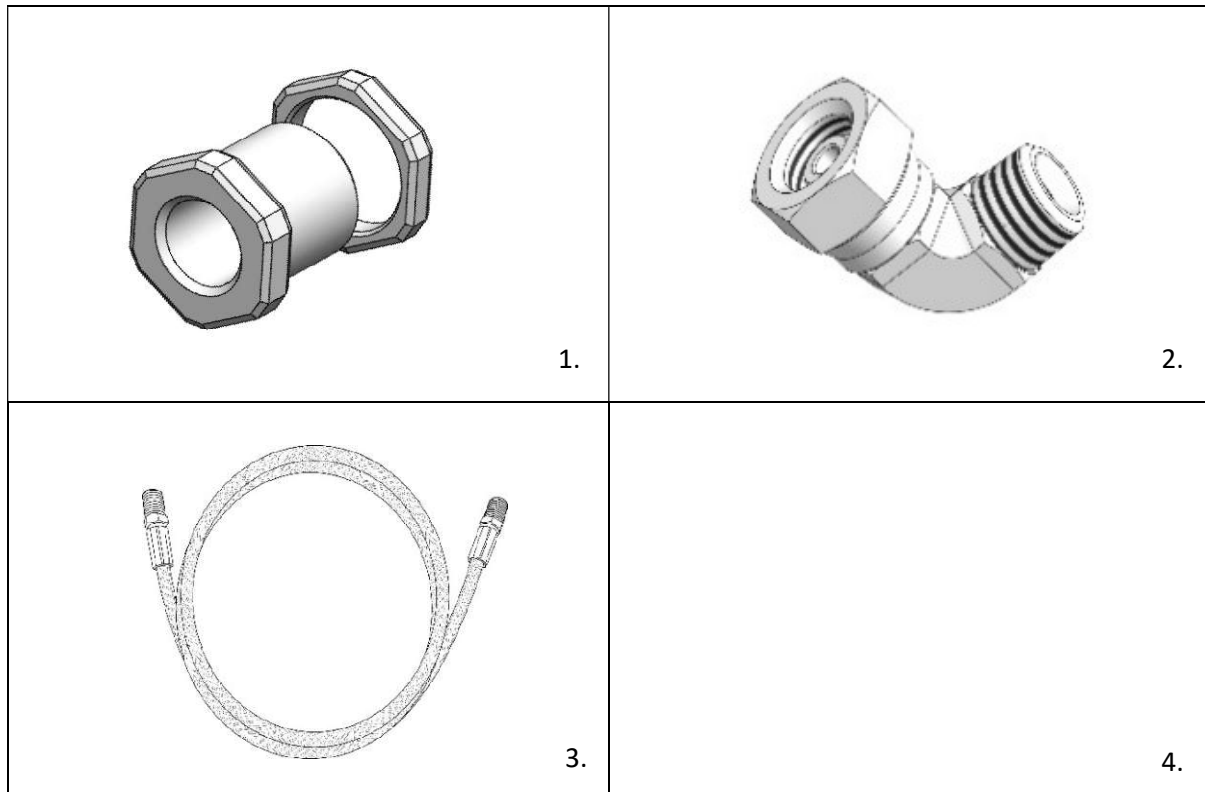
KIT CONTENTS



ITEM	DESCRIPTION	PART NO.	QTY
1	JBA 150 PRADO SUBWOOFER BRACKET	10-CB202S	1
2	M6 JACK NUT STEEL	JN6-047	4
3	M6 X 25MM SEMS ASSMEMBLY Z/Y	JNS-303	4
4	M8 X 16MM BUTTON HD SOCKET SCR GR 304 S/S	X72 08016304	4
5	5/16 X 3/4 X 18G FLAT WASHER GR 304 S/S	X79 082018G304	8
6	M8 NYLON INSERT LOCK NUT GR 304S/S	X53 8304	4
7	M4 X 12MM PAN HD PHIL M/T GR 304 S/S	X37 0412PP304	1

OPTIONAL KIT PARTS- JBA-CB202SKIT2

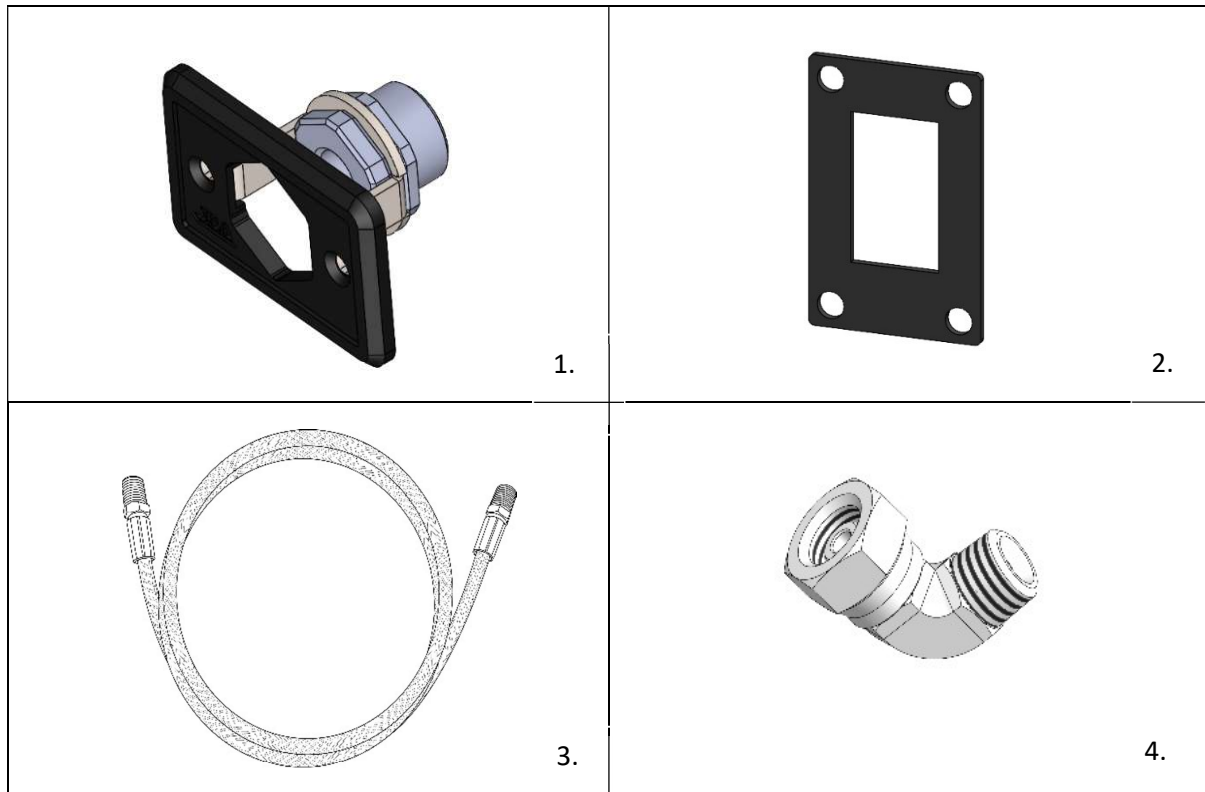
JBA KIT- ON BRACKET SWITCH/AIR OUTLETS



ITEM	DESCRIPTION	PART NO.	QTY
1	JBA STAINLESS BULK HEAD	JBA-CB103	1
2	JBA STAINLESS ELBOW 90 DEGREE	JBA-CB106	2
3	JBA STAINLESS HOSE 400MM	JBA-CB111	1

OPTIONAL KIT PARTS- JBA-CB202SKIT3

JBA KIT- DRAWER FRONT AIR OUTLET AND SWITCH MOUNT

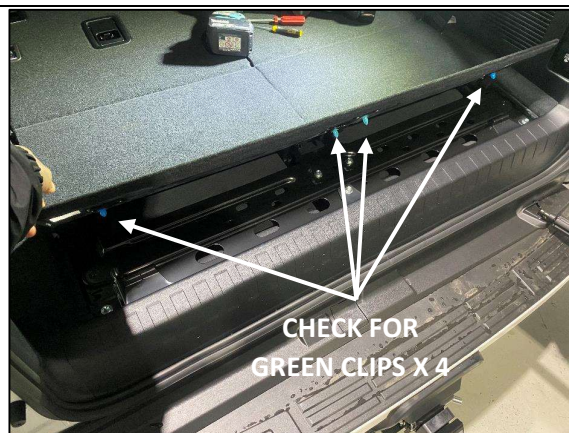


ITEM	DESCRIPTION	PART NO.	QTY
1	JBA BULK HEAD RECESSED FIT PANEL	JBA-CB101	1
2	JBA SWITCH MOUNTING PLATE	JBA-CB901	1
3	JBA STAINLESS HOSE 400MM	JBA-CB111	1
4	JBA STAINLESS ELBOW 90 DEGREE	JBA-CB106	2

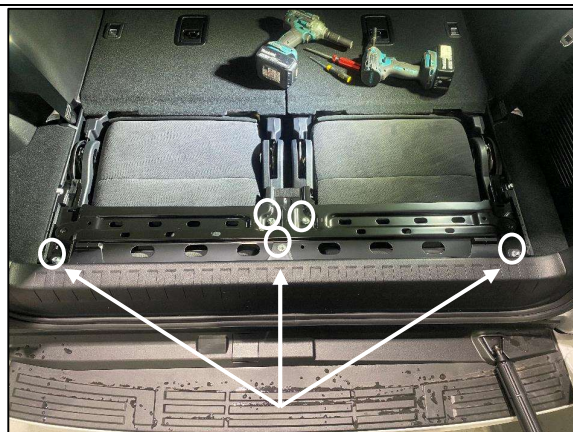
1.1 PREPARING THE VEHICLE- 7 SEAT VARIANTS REMOVING THE SEATS. FOR 5 SEAT MODELS MOVE TO STEPS 1.2 BELOW



STEP 1.1.1 POP OPEN 2 X REAR TIE DOWNS AND REMOVE M6 BOLTS UNDER PLASTIC COVER. REMOVE TIE DOWNS AND KEEP ASIDE.



STEP 1.1.2 PULL UP PANEL FROM REAR OF VEHICLE. MAY NEED A BIT OF FORCE. CHECK GREEN CLIPS COME OUT AND STAY IN PANEL.



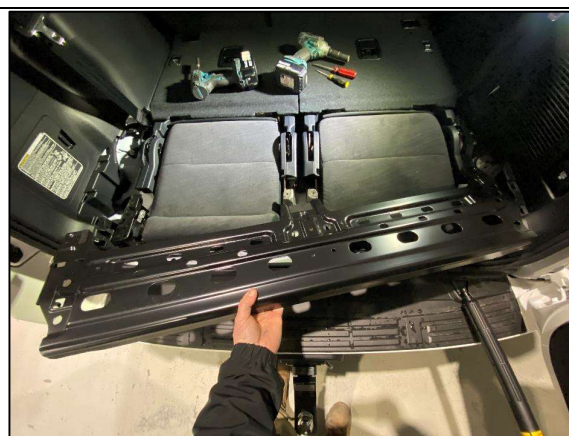
STEP 1.1.3 REMOVE 5 X M6 BOLTS FROM BLACK STEEL BRACKET AND KEEP ASIDE FOR LATER.



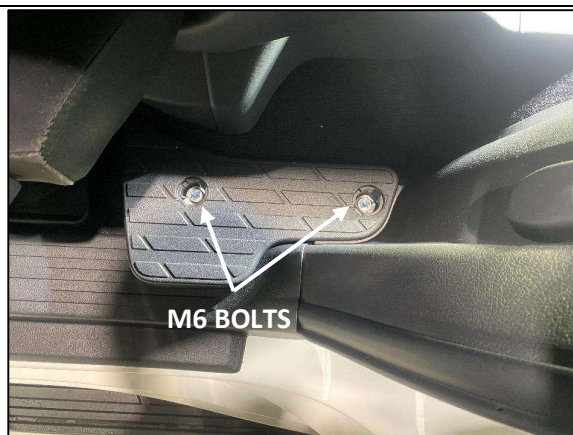
STEP 1.1.4 PULL OUT THE REAR PLASTIC TRIM AS SHOWN AND SET ASIDE. AGAIN, A BIT OF FORCE MAY BE REQUIRED TO REMOVE. CHECK FOR TRIM CLIPS.



STEP 1.1.5 PULL THE SIDE PANELS OUT FROM EITHER SIDE AS SHOWN. CHECK TRIM CLIPS STAY IN PANEL.



STEP 1.1.6 REMOVE BLACK STEEL BRACKET AND SET ASIDE.



STEP 1.1.7 MOVE TO THE SECOND ROW OF SEATS ON THE PASSENGER SIDE AND FOLD/SLIDE FORWARD. REMOVE PLASTIC CAPS AND REMOVE M6 SCREWS ON SIDE TRIM AS SHOWN



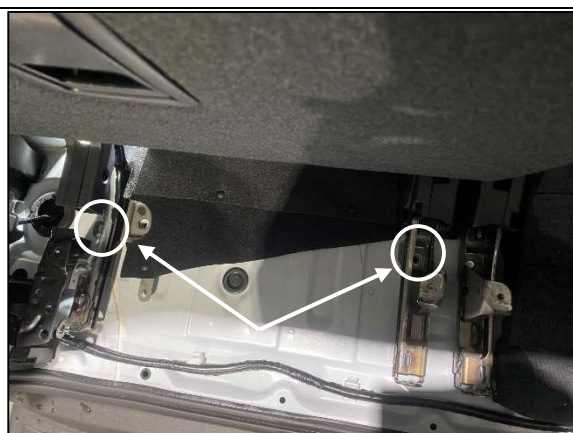
STEP 1.1.8 PULL UP DOOR TRIM PANEL AS SHOWN CHECKING FOR BODY CLIPS. REMOVE SEAT BELT BOLT COVER AND UNDO 14MM BOLT.



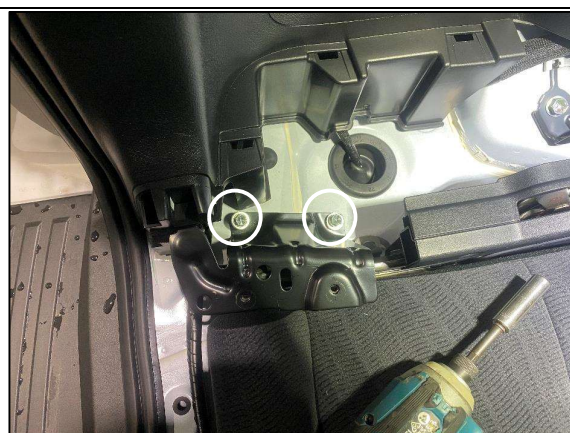
STEP 1.1.9 REMOVE 2 TRIM COVERS ON GRAB HANDLE AND REMOVE M6 SCREWS.



STEP 1.1.10 POP OPEN PLASTIC VOVERS AND REMOVE 2 X 14MM BOLTS. RELEASE 3RD ROW SEAT AND BRING FORWARD AS SHOWN.



STEP 1.1.11 MOVE BACK AROUND TO THE REAR OF THE CAR AND REMOVE 2 X 14MM BOLTS.



STEP 1.1.12 REMOVE 2 X M6 BOLTS AND REMOVE BLACK STEEL BRACKET AND SET ASIDE AS SHOWN.



STEP 1.1.13 IF THE VEHICLE HAS ELECTRIC SEATS, UNCLIP THE WIRING HARNESS AS SHOWN. THE PASSENGER SIDE 3RD ROW SEAT CAN NOW BE COMPLETELY REMOVED. PULL OUT AND SET ASIDE.



STEP 1.1.14 REMOVE 14MM BOLT ON SEAT BELT AS SHOWN.



STEP 1.1.15 REMOVE 2 X PHILLIPS HEAD SCREWS AT BASE OF REAR QUARTER PANEL.



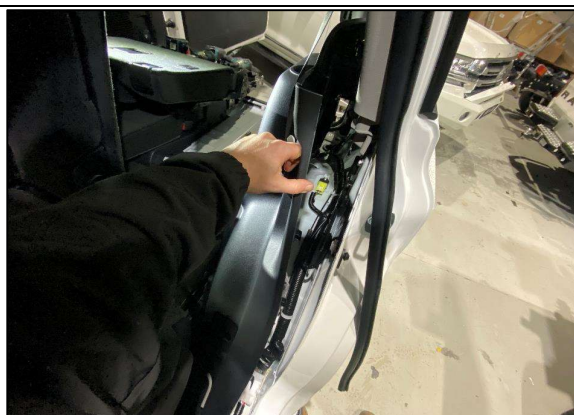
STEP 1.1.16 TWIST REAR PLASTIC CAP 90 DEGREES AND REMOVE. REMOVE M6 PHILLIPS HEAD SCREW EXPOSED.



STEP 1.1.17 REMOVE PLASTIC COVER AS SHOWN AND REMOVE M6 SCREW AS SHOWN.



STEP 1.1.18 PULL BACK RUBBER SEAL AND BEGIN PULLING BACK QUARTER PANEL AS SHOWN. CHECK FOR TRIM CLIPS AGAIN.



STEP 1.1.19 MOVE TO THE SECOND ROW PASSENGER DOOR AND BEGIN PULLING BACK QUARTER PANEL AGAIN CHECKING TRIM CLIPS.



STEP 1.1.20 FULLY REMOVE QUARTER PANEL GENTLY AND SET ASIDE. CHECK FOR TRIM CLIPS (REFER TO STEPS 1.3.1-1.3.3 BELOW)



STEP 1.1.21 REMOVE SUBWOOFER TO ENABLE EASE OF COMPRESSOR INSTALL. UNCLIP PLUG FROM BOTTOM RIGHT-HAND SIDE WHERE SHOWN.



STEP 1.1.22 REMOVE THE 4 X M6 SCREWS AND KEEP ASIDE FOR RE-INSTALL. REMOVE SUBWOOFER AND SET ASIDE ON A SOFT, CLEAN SURFACE.

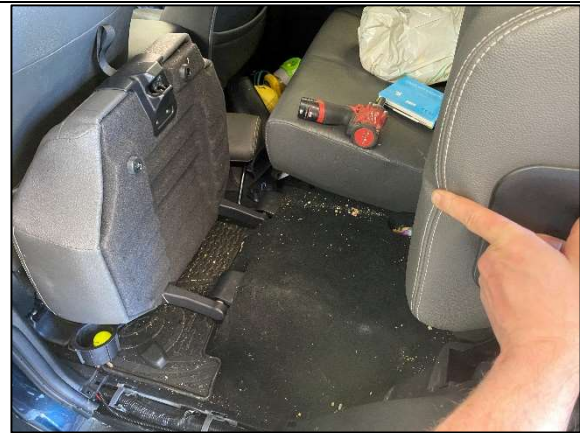


STEP 1.1.23 REMOVE THE VEHICLE JACK FROM THE VEHICLE. **NOTE** THIS IS NOT REFITTED TO THIS LOCATION AND WILL REQUIRE A NEW STORAGE LOCATION.

1.2 PREPARING THE VEHICLE- 5 SEAT VARIANTS REMOVING THE SEATS



STEP 1.2.1 MOVE TO THE SECOND ROW OF SEATS ON THE PASSENGER SIDE AND PULL THE TAB FORWARD AS SHOWN TO FOLD THE BASE FORWARD.



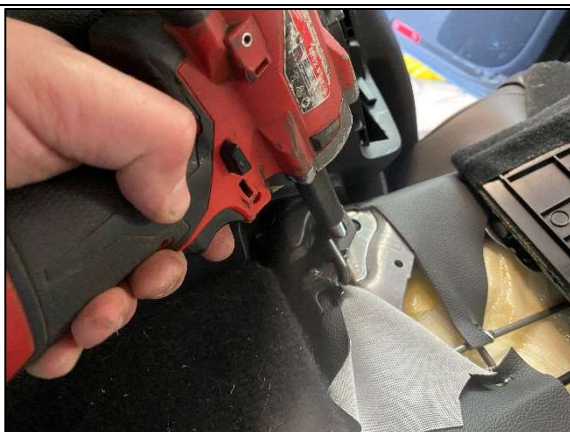
STEP 1.2.2 FOLD THE BASE FORWARD AS SHOWN.



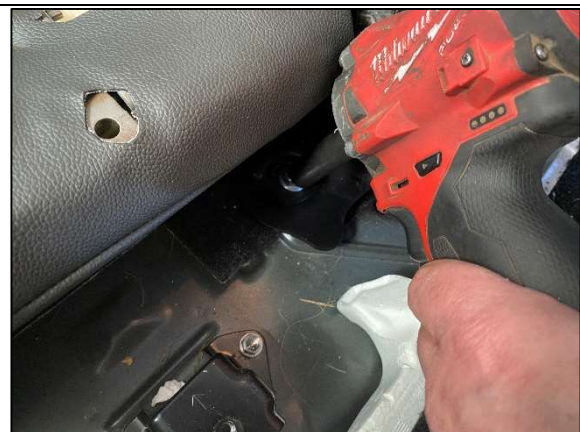
STEP 1.2.3 THE BACK OF THE SEAT NOW NEEDS TO BE FULLY REMOVED. START AT THE FRONT OF THE SEAT AND REMOVE BOLT AS SHOWN.



STEP 1.2.4 MOVE TO THE REAR OF THE VEHICLE AND REMOVE THE TIE DOWNS AS SHOWN.



STEP 1.2.5 FOLD THE SEAT FORWARD AND REMOVE BOLT AS SHOWN.



STEP 1.2.6 REMOVE BOLT AS SHOWN AND COMPLETELY REMOVE SEAT FROM VEHICLE.



STEP 1.2.7 REMOVE THE SECOND ROW SEAT BELT USING 14MM SOCKET AS SHOWN.



STEP 1.2.8 POP THE SEAT FOLD LEVER ASSEMBLY OUT AS SHOWN.



STEP 1.2.9 FLIP THE ASSEMBLY OVER AND RELEASE THE CABLE AS SHOWN. TAKE NOTE OF THE ORIENTATION FOR RE-INSTALLATION LATER.



STEP 1.2.10 REMOVE BOTTOM BOLT AS SHOWN.



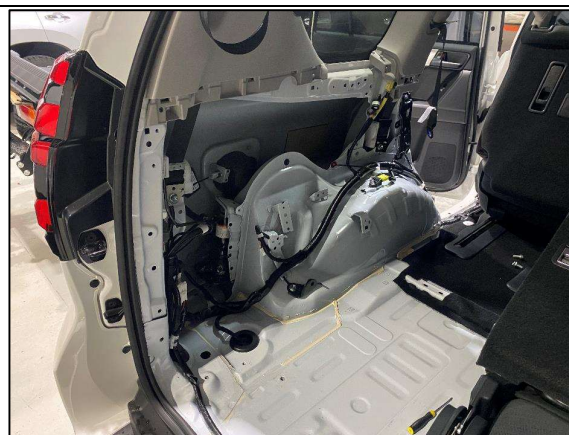
STEP 1.2.11 PULL THE CARPET BACK AND REMOVE 2 X PHILLIPS HEAD SCREWS.



STEP 1.2.12 REMOVE PLASTIC COVER BELOW WINDOW AS SHOWN AND REMOVE M6 SCREW IN CAVITY.



STEP 1.2.13 AT THE REAR OF THE VEHICLE, TWIST REAR PLASTIC CAP 90 DEGREES AND REMOVE. REMOVE M6 PHILLIPS HEAD SCREW IN CAVITY.



STEP 1.2.14 FULLY REMOVE QUARTER PANEL GENTLY AND SET ASIDE. CHECK FOR TRIM CLIPS (REFER TO STEPS 1.3.1-1.3.3 BELOW)



STEP 1.2.15 REMOVE THE VEHICLE JACK FROM THE VEHICLE. **NOTE** THIS IS NOT REFITTED TO THIS LOCATION AND WILL REQUIRE A NEW STORAGE LOCATION.

1.3 REFERENCE PICS FOR TRIM CLIPS



STEP 1.3.1 REFERENCE PICS FOR TRIM CLIP (EXAMPLE ONLY). AS YOU ARE REMOVING PANELS, KEEP NOTICE OF ANY CLIPS THAT HAVE REMAINED IN THE VEHICLE- NORMALLY WHITE OR GREEN AS SHOWN.

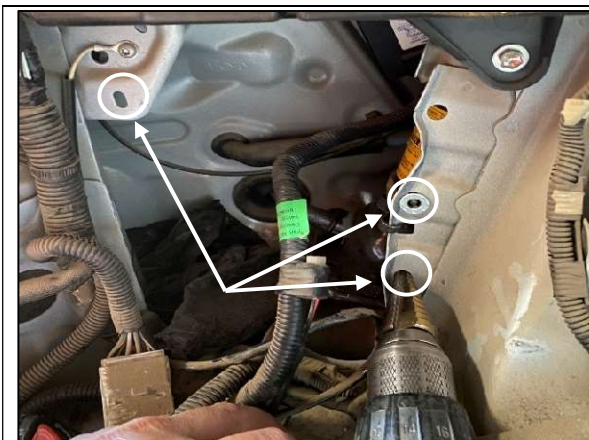


STEP 1.3.2 USE A TRIM CLIP REMOVER TO POP OUT OF THE VEHICLE AS SHOWN.



STEP 1.3.3 RE-INSERT INTO THE PLASTIC TRIM PANEL LOCATION. THEY WILL NORMALLY SLIDE IN AND POP INTO POSITION. THESE STEPS WILL ENSURE AN EASIER RE-INSTALLATION OF THE PANELS LATER.

1.4 PREPARING THE VEHICLE- BRACKET INSTALL



STEP 1.4.1 DRILL THE 3 HOLE POSITIONS SHOWN TO 12MM AS SHOWN. THE USE OF A STEP DRILL CAN HELP MAKE THIS STEP EASIER.



STEP 1.4.2 PUSH IN THE M6 JACK NUT TO EACH HOLE PREVIOUSLY DRILLED AS SHOWN.

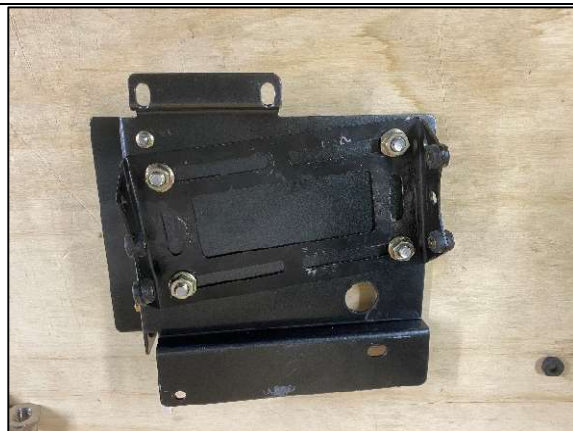


STEP 1.4.3 INSTALL THE BRACKET (WITHOUT THE COMPRESSOR OR FITTINGS ATTACHED YET) AND TIGHTEN THE 3 X M6 X 25 SEMS BOLTS INTO THE JACK NUTS PREVIOUSLY PRESSED IN. WITH THE BOLTS NOW TIGHT, MARK AND DRILL THE BOTTOM LEFT HOLE TO 6MM.



STEP 1.4.4 REMOVE THE BRACKET AND CHECK THE 3 X JACK NUTS INSTALLED HAVE PULLED UP TIGHT. THE NUTS SHOULD LOOK LIKE THE PICTURE FROM BEHIND. DRILL OUT THE BOTTOM LEFT HOLE IN THE BODY TO 12MM AND PRESS IN THE LAST JACK NUT.

2.1 PREPARING THE COMPRESSOR AND BRACKET



STEP 2.1.1 SEPARATE THE COMPRESSOR FROM THE BASE. INSTALL THE BASE TO THE JBA COMPRESSOR BRACKET USING M8 X 16 DOME HEAD AND WASHER FROM THE FRONT AND M8 NYLOC AND WASHER FROM THE REAR.



STEP 2.1.2 INSTALL THE FUSE TO THE BRACKET USING M4 X 12 SCREWS AND INSTALL THE TJM COMPRESSOR SWITCH AS SHOWN.



STEP 2.1.3 INSTALL THE TJM PRESSURE SENSOR IN THE BOTTOM 1/8" LOCATION ON THE MOTOR SIDE AS SHOWN.

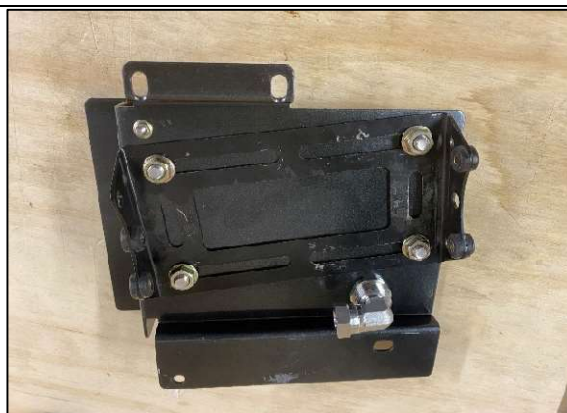
STEP 2.1.4 IF NOT USING JBA PRE MADE KITS (KIT2 QUARTER PANEL MOUNT OR KIT3 DRAWER FRONT MOUNT) WORK OUT AND FIT ANY ELBOWS AND HOSES AT THIS STEP AND MOVE TO STEP 3.

IF USING JBA KITS, FOLLOW THE RELEVANT STEPS AS REQUIRED BELOW STEPS 2.2 OR 2.3.

2.2 OPTIONAL STEPS- JBA-CB202SKIT2 ON QUARTER PANEL ON BRACKET AIR/SWITCH FITMENT



STEP 2.2.1 FIT BULK HEAD AS SHOWN. **ENSURE LOCTITE IS APPLIED TO THE NUT ON REAR.** INSTALL TJM NITTO FITTING (NOT SUPPLIED BY JBA TJM P/N 013COMPPF01).



STEP 2.2.2 INSTALL JBA-CB106 90 DEGREE ELBOW TO THE REAR OF THE BULK HEAD IN THE ORIENTATION SHOWN.



STEP 2.2.3 INSTALL JBA-CB111 400MM HOSE AND DIRECT THE HOSE ALONG THE COMPRESSOR BASE BRACKET AS SHOWN.



STEP 2.2.4 INSTALL JBA-CB106 90 DEGREE ELBOW ON THE OPPOSITE SIDE OF THE PRESSURE SENSOR INSTALLED IN STEP 2.1.3 AS SHOWN.



STEP 2.2.5 RE-INSTALL THE TJM COMPRESSOR TO THE BASE IN THE ORIENTATION SHOWN AND CONNECT THE HOSE THE ELBOW.

2.3 OPTIONAL STEPS- JBA-CB202SKIT3 DRAWER FRONT AIR/SWITCH FITMENT



STEP 2.3.1 INSTALL JBA-CB106 90 DEGREE ELBOW TO THE 1/4" LOCATION ON THE SAME SIDE OF THE PRESSURE SWITCH PREVIOUSLY INSTALLED IN STEP 2.1.3 IN THE ORIENTATION SHOWN.



STEP 2.3.2 CONNECT THE 400MM HOSE AND RE-INSTALL THE TJM COMPRESSOR TO THE BASE BRACKET IN THE ORIENTATION SHOWN.

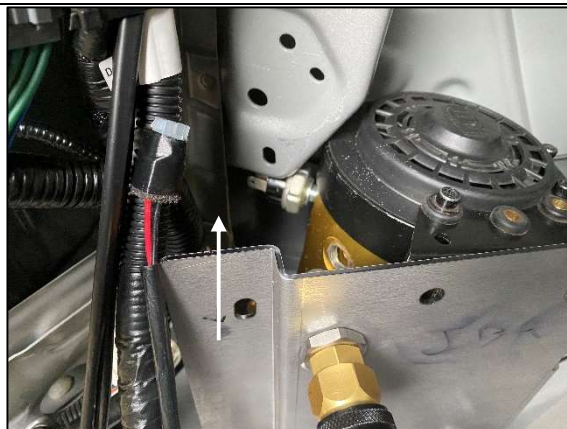


STEP 2.3.3 MEASURE AND CONFIRM THE LOCATIONS FOR THE SWITCH AND NITTO OUTLET AND PREPARE THE DRAWER FRONT.

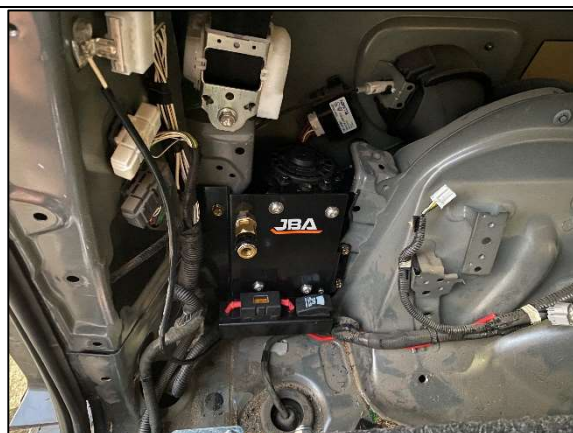
3. INSTALLING THE BRACKET AND COMPRESSOR INTO THE VEHICLE



STEP 3.1 LIFT COMPRESSOR INTO THE PREPARED LOCATION. ROTATE THE COMPRESSOR ON A SLIGHT ANGLE AS SHOWN TO FEED THE COMPRESSOR BODY IN BEHIND THE BODY PANEL ON THE RIGHT SIDE.



STEP 3.2 LIFT THE COMPRESSOR UP TO ENABLE THE LEFT HAND SIDE TO BE FED IN. YOU CAN LIFT UP AS HIGH AS THE PRESSRE SWITCH TO GET IN. SWING THE LEFT HAND SIDE IN AND LOWER THE WHOLE ASSEMBLY BACK DOWN INTO POSITION.



STEP 3.3 BEFORE FULLY TIGHTENING, COMPLETE WIRING AS PER TJM COMPRESSOR INSTRUCTIONS AND SPECIFICATION. TEST POWER AND ALL AIR CONNECTIONS FOR ANY LEAKS. ALIGN THE BRACKET AS REQUIRED AND FULLY TIGHTEN ALL SCREWS.



STEP 3.4 CABLE TIE ALL WIRING AND AIR HOSES NEATLY. RE-INSTALL SUB WOOFER. RE-ASSEMBLE QUARTER PANEL AND SEATS PREVIOUSLY REMOVED, WIPE DOWN AND VACCUM ALL PANELS.