

**PRODUCT-** TJM SINGLE/TWIN/TANK COMPRESSOR MOUNTING BRACKET

**VEHICLE-** 300 SERIES LANDCRUISER 2021+

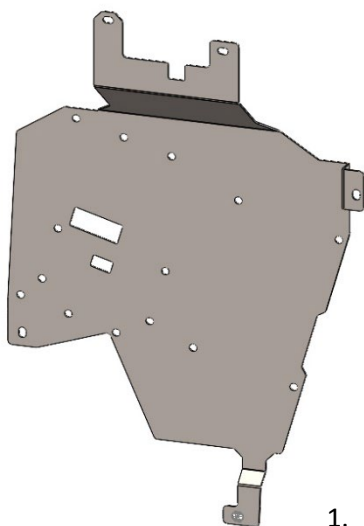
**PART NUMBER-** JB-CB231

### ESTIMATED FIT TIME

- |  |              |
|--|--------------|
| - REMOVAL AND REFIT OF SEAT AND INTERIOR PANELS    | 60 MINS      |
| - REMOVAL AND REFIT OF DRAWER SYSTEM (IF REQUIRED) | 90-120 MINS  |
| - PREPARING AND MOUNTING COMPRESSOR                | 60 MINS      |
| - WIRING COMPRESSOR AND MOUNTING SWITCH            | 120-180 MINS |

### IMPORTANT NOTES

- READ INSTRUCTIONS CAREFULLY PRIOR TO FITMENT
- ENSURE 567 THREAD SEALANT IS APPLIED TO ALL AIR THREADS INSTALLED
- ENSURE THAT ALL TRIM CLIPS ARE REMOVED FROM THE VEHICLE WHEN REMOVING PANELS AND RE-INSERTED BACK INTO THE PANELS BEFORE RE-INSTALLATION (SEE STEPS 1.25-1.27).
- REFER TO TJM COMPRESSOR INSTALLATION INSTRUCTIONS FOR WIRING SPECIFICATIONS
- NITTO FITTING USED WITH KITS 2 AND 3 SUPPLIED WITH TJM AIRLINE KIT (013COMPKN) SUPPLIED SEPERATLEY (NOT BY JBA) AVAILABLE THROUGH TJM STORES



### KIT CONTENTS

ITEM	DESCRIPTION	PART NO.	QTY
1	300 SERIES COMPRESSOR BRACKET	10-CB231A	1
2	M6 HEX SERR FLANGE NUT ZY	N24 06ZY	1
3	M6 x 20MM SEMS ASSMEMBLY Z/Y	B48 0620ZY	5
4	M8 X 16MM HEX HEAD SET SCREW GR 8.8 316 S/S	X07 80168.8316	6
5	5/16 X 3/4 X 18G FLAT WASHER GR 304 S/S	X79 082018G304	12
6	M8 NYLON INSERT LOCK NUT GR 304S/S	X53 8304	6

## 1. PREPARING THE VEHICLE



**STEP 1.1** START AT THE REAR PASSENGER SIDE DOOR AND FOLD THE PASSENGER SECOND ROW OF SEATS FORWARD AS SHOWN.



**STEP 1.2** REMOVE PLASTIC TRIM LEVERING UP FROM BODY CLIPS AS SHOWN.



**STEP 1.3** REMOVE THE SECOND ROW SEAT BELT USING 14MM SOCKET.



**STEP 1.4** MOVE TO REAR OF THE VEHICLE AND REMOVE TIE DOWN POINTS USING 10MM SOCKET (BOTH LEFT AND RIGHT SIDES).



**STEP 1.5** PULL OUT TRIM PANELS (LEFT AND RIGHT SIDES) AS SHOWN. (CHECK FOR ANY TRIM CLIPS THAT MAY HAVE REMAINED IN THE VEHICLE, REMOVE AND REFIT TO THE PANEL SEE STEPS 1.25-1.27).



**STEP 1.6** REMOVE REAR TRIM PANEL PULLING BODY CLIPS UP FROM LEFT TO RIGHT AS SHOWN. (CHECK FOR TRIM CLIPS)





**STEP 1.7** FOLD THE PANEL OVER AND REMOVE 3 X TRIM CLIPS AND BOTH LEFT AND RIGHT SEATS TO FULLY REMOVE PANEL.



**STEP 1.8** REMOVE REAR TRIM PANEL COMPLETELY AS SHOWN. (CHECK FOR TRIM CLIPS)



**STEP 1.9** REMOVE REAR SUPPORT BRACKETS USING 10MM SOCKET 2 X SCREWS.



**STEP 1.10** UNCLIP THE TWO WIRING LOOMS ON THE PASSENGER SEAT AS SHOWN.



**STEP 1.11** STAND THE PASSENGER SEAT UP AS SHOWN.

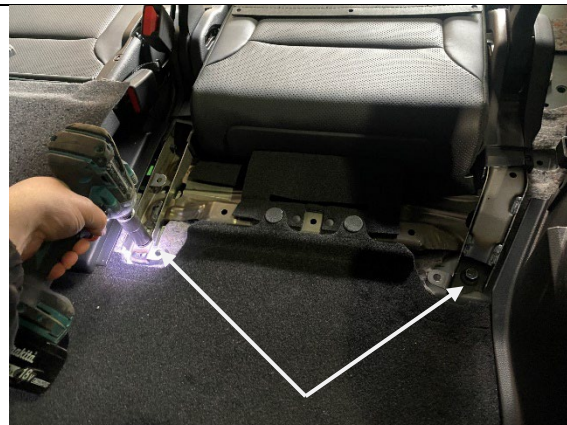


**STEP 1.12** MOVE TO THE FRONT OF THE SEAT AND UNCLIP PLASTIC TRIM AS SHOWN (CHECK FOR TRIM CLIPS)

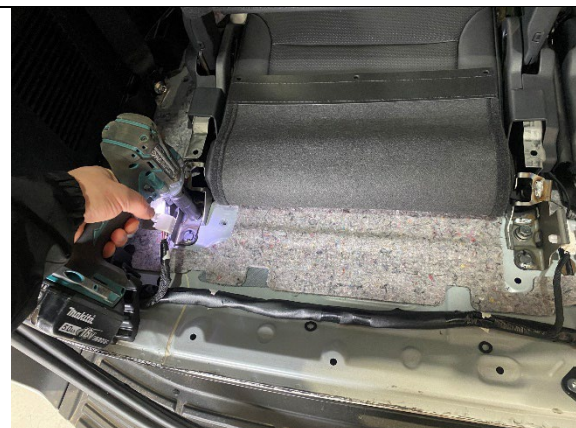




**STEP 1.13** PULL OUT THE TRIM CLIPS AS SHOWN. THEY ARE QUITE LONG SO WILL NEED A BIT OF PULLING.



**STEP 1.14** REMOVE 2 X 14MM BOLTS IN THE SEAT AS SHOWN.



**STEP 1.15** MOVE BACK TO THE REAR OF THE CAR AND REMOVE 2 X 14MM BOLTS.



**STEP 1.16** PULL THE SEAT OUT AND SET ASIDE AS SHOWN.

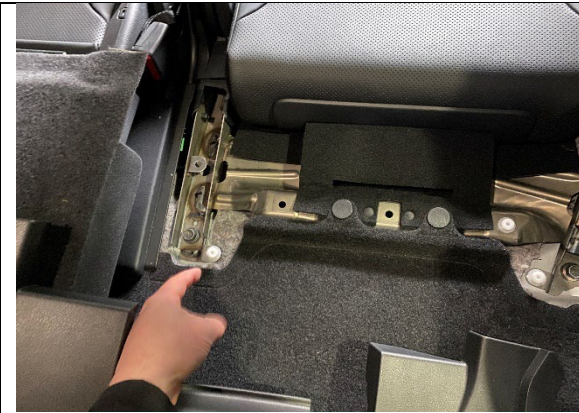


**STEP 1.17** REMOVE 3<sup>RD</sup> ROW SEAT BELT USING 14MM SOCKET AND RETRACT OUT OF THE WAY.



**STEP 1.18** PULL BACK THE RUBBER SEAL AT THE REAR.

## REFERENCE PICS FOR TRIM CLIPS



**STEP 1.25** REFERENCE PICS FOR TRIM CLIP (EXAMPLE ONLY). AS YOU ARE REMOVING PANELS, KEEP NOTICE OF ANY CLIPS THAT HAVE REMAINED IN THE VEHICLE- NORMALLY WHITE OR GREEN AS SHOWN.



**STEP 1.26** USE A TRIM CLIP REMOVER TO POP OUT OF THE VEHICLE AS SHOWN.



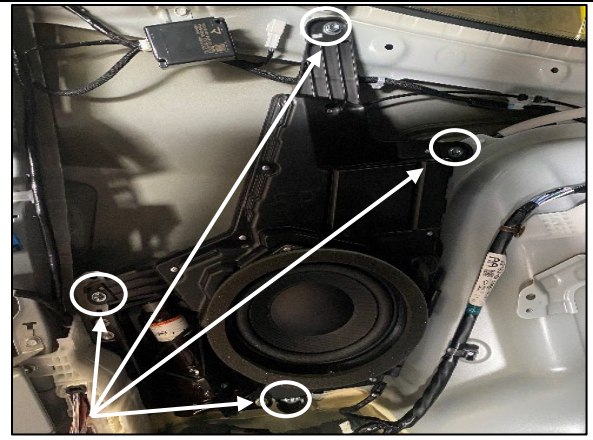
**STEP 1.27** RE-INSERT INTO THE PLASTIC TRIM PANEL LOCATION. THEY WILL NORMALLY SLIDE IN AND POP INTO POSITION. THESE STEPS WILL ENSURE AN EASIER RE-INSTALLATION OF THE PANELS LATER.



## 2. REMOVING SUBWOOFER (IF REQUIRED)

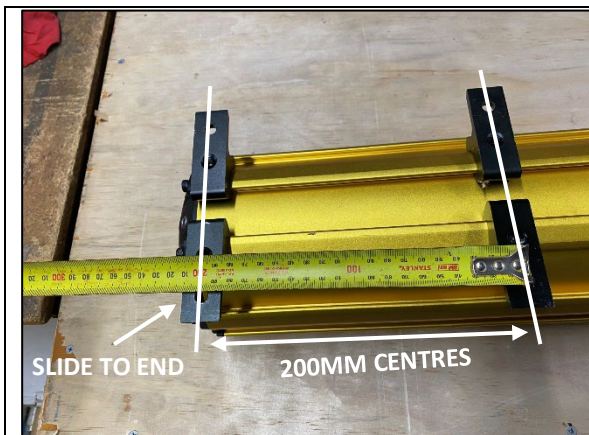


**STEP 2.1** REMOVE PLUG FROM BOTTOM RIGHT HAND SIGN WHERE SHOWN

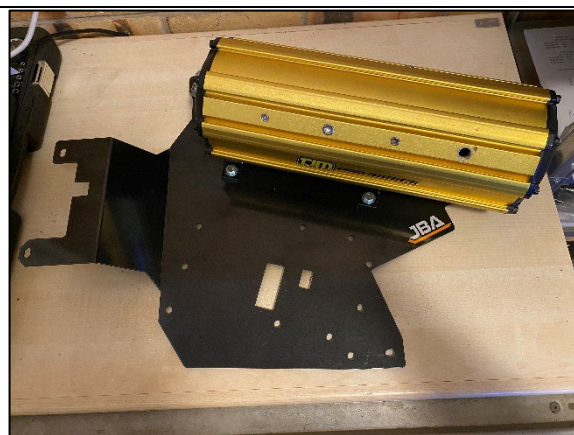


**STEP 2.2** REMOVE THE 4 X M6 SCREWS AND KEEP SPEAKER ASIDE. SCREWS NOT REQUIRED LATER INSTALL, KEEP WITH SPEAKER.

### 3. PREPARING TANK (IF REQUIRED)



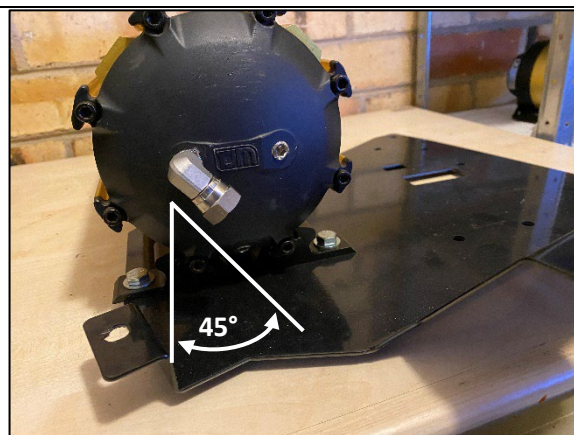
**STEP 3.1** SLIDE FIRST SET OF LEGS ALL THE WAY TO END OF TANK. SLIDE SECOND SET OF LEGS 200MM CENTRE TO CENTRE FROM FIRST SET OF LEGS.



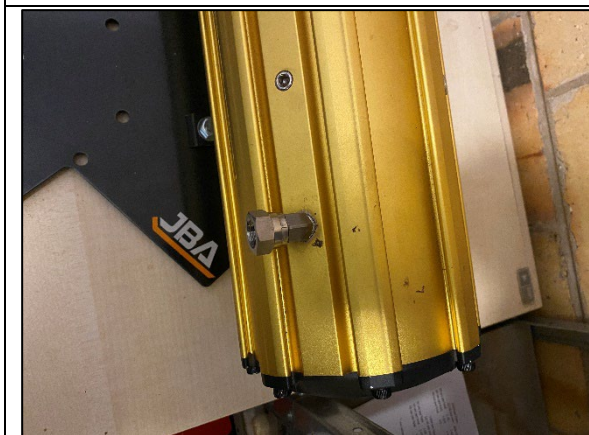
**STEP 3.2** POSITION THE TANK AS SHOWN WITH THE TOP OF THE TANK TOWARDS THE TOP OF THE BRACKET.



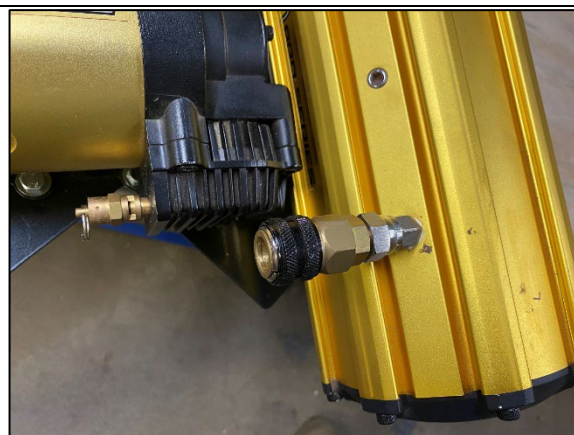
**STEP 3.3** FIT TANK TO COMPRESSOR BRACKET USING M8 X 20 BOLTS WITH WASHER UNDER THE HEAD AND FASTEN FROM BEHIND USING ANOTHER WASHER AND M8 NYLOC NUT.



**STEP 3.4** FIT JBA-CB106 90 DEGREE ELBOW TO THE TOP OF THE TANK ON A 45 DEGREE ANGLE USING 567 THREAD SEALANT AS SHOWN.



**STEP 3.5** FIT JBA-CB105 45 DEGREE ELBOW TO THE BOTTOM 1/4" INLET ON THE TANK AS SHOWN USING 567 THREAD SEALANT.



**STEP 3.6** FIT THE TJM NITTO FITTING (NOT SUPPLIED) OR JBA-CB112 800MM HOSE IF FITTING AIR OUTLET TO DRAWER FRONT.



## 4. PREPARING SINGLE COMPRESSOR (REFER TO STEP 5 IF FITTING TWIN COMPRESSOR)



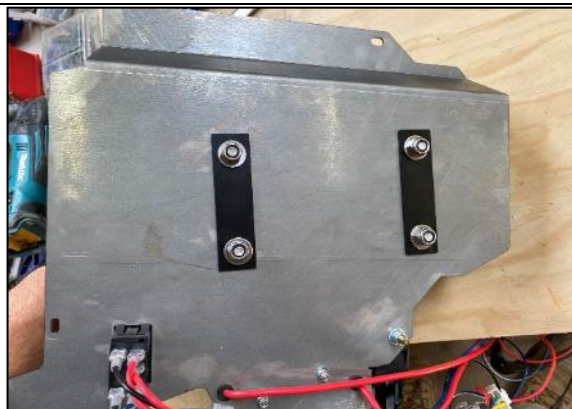
**STEP 4.1** ROTATE THE COMPRESSOR 90 DEGREES WITH POWER WIRES FACING DOWN TOWARDS MOUNTING BRACKET (REFER TJM INSTRUCTIONS).



**STEP 4.2** POSITION THE COMPRESSOR ON THE BRACKET IN THE ORIENTATION AS SHOWN. FEED THE POWER WIRE THROUGH THE SMALLER HOLE.

**STEP 4.3.** FASTEN THE COMPRESSOR TO THE BRACKET USING THE M8 X 16 HEX SET SCREWS WITH A WASHER UNDER THE HEAD.

**DO NOT USE THE FASTENERS PROVIDED WITH THE TJM COMPRESSOR AS THEY ARE TOO LONG AND WILL CAUSE DAMAGE TO THE VEHICLE IF USED.**



**STEP 4.4** FIX FROM THE REAR USING THE TWO REINFORCING STRAPS PROVIDED IN THE TJM COMPRESSOR THEN A WASHER AND NYLOC NUT ON EACH SET SCREW AS SHOWN.



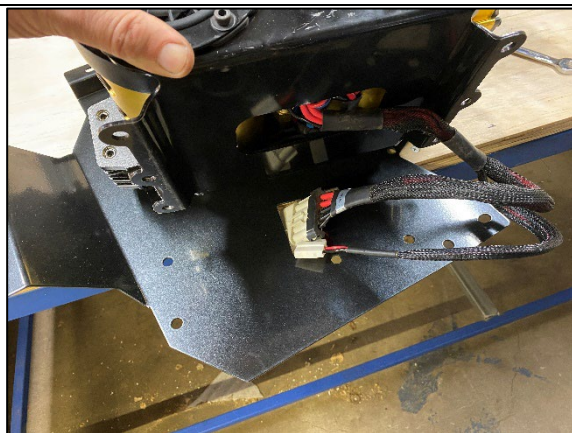
**STEP 4.5** IF NOT FITTING A TANK, FIT JBA-CB105 45 DEGREE ELBOW TO THE BOTTON RIGHT 1/4" OUTLET AS SHOWN. IF FITTING AIR OUTLET DIRECT TO COMPRESSOR FIT NOW AS SHOWN, IF FITTING TO DRAWER FRONT, INSTALL JBA-CB112 800MM HOSE.



**STEP 4.6** IF FITTING WITH A TANK, INSTALL JBA-CB106 90 DEGREE ELBOW TO THE TOP RIGHT 1/4" OUTLET AS SHOWN AND CONNECT JBA-CB111 400MM HOSE. USE 567 THREAD SEALANT ON ALL CONNECTIONS.



## 5. PREPARING TWIN COMPRESSOR



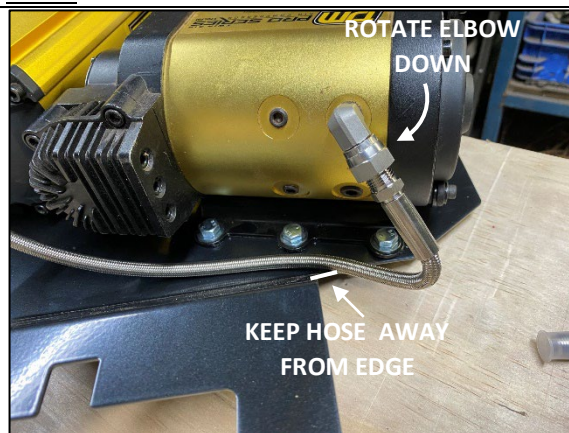
**STEP 5.1** FEED WIRING LOOM THROUGH LARGE HOLE AS SHOWN.



**STEP 5.2** FASTEN THE COMPRESSOR TO THE BRACKET USING THE M8 X 16 HEX SET SCREWS WITH A WASHER IS UNDER THE HEAD. FASTEN FROM BEHIND USING WASHER AND M8 NYLOC NUT PROVIDED.  
**DO NOT USE THE FASTENERS PROVIDED WITH THE TJM COMPRESSOR AS THEY ARE TOO LONG AND WILL CAUSE DAMAGE TO THE VEHICLE IF USED.**



**STEP 5.3** IF NOT FITTING A TANK, FIT JBA-CB105 45 DEGREE ELBOW TO THE BOTTOM LEFT 1/4" OUTLET AS SHOWN. IF FITTING AIR OUTLET DIRECT TO COMPRESSOR FIT NOW AS SHOWN, IF FITTING TO DRAWER FRONT, INSTALL JBA-CB112 800MM HOSE. USE 567 THREAD SEALANT ON ALL CONNECTIONS.



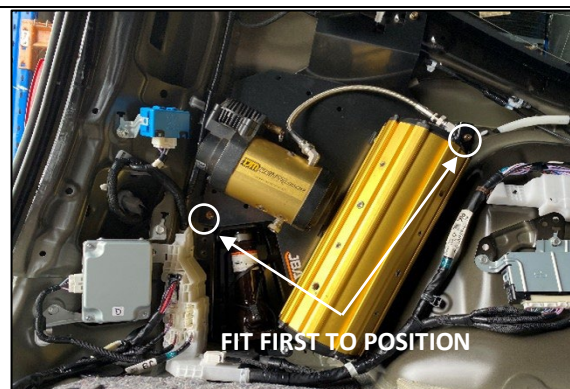
**STEP 5.4** IF FITTING WITH A TANK, INSTALL JBA-CB106 90 DEGREE ELBOW TO THE TOP RIGHT 1/4" OUTLET AS SHOWN AND CONNECT JBA-CB111 400MM HOSE. ADJUST THE ELBOW AS REQUIRED TO ENSURE HOSE ISNT RUBBING AGAINST THE EDGE OF THE BRACKET AS SHOWN. USE 567 THREAD SEALANT ON ALL CONNECTIONS.



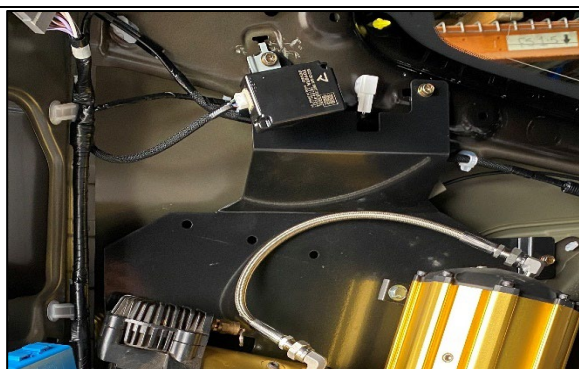
## 6. INSTALLING THE BRACKET AND COMPRESSOR INTO THE VEHICLE



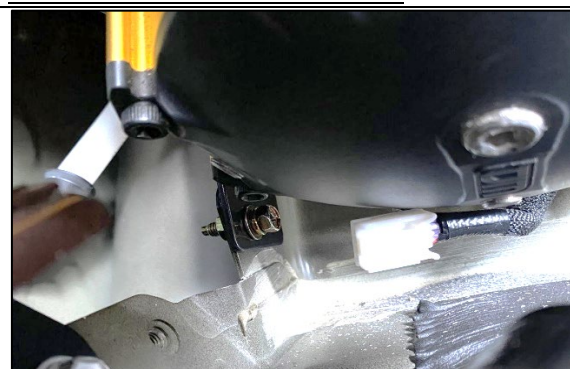
**STEP 6.1** LIFT THE COMPRESSOR BRACKET INTO PLACE. IT MAY BE EASIER WITH A SECOND PERSON TO HELP PASS AND HOLD AS REQUIRED. ENSURE THE RHS OF THE BRACKET IS BEHIND THE WHEEL ARCH LIP AS SHOWN.



**STEP 6.2** LOOSELY FIT THE MIDDLE TWO FASTENERS AS SHOWN. DON'T FIT THE TOP TWO SCREWS FIRST AS THE WEIGHT HANGING FROM THE TOP CAN STRETCH THE BRACKET AND MAKE THE REST OF THE INSTALL HARDER.



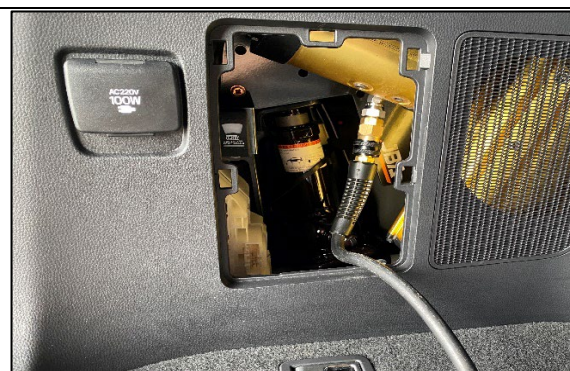
**STEP 6.3** FIT THE TOP TWO SCREWS USING M6 X 20 SEMS ASSEMBLY AND M6 HEX SERR FLANGE NUT.



**STEP 6.4** FIT THE BOTTOM HOLE USING M6 X 20 SEMS WITH M6 WHIZZ NUT BEHIND AS SHOWN. THIS STEP CAN BE TRICKY WITH A TANK FITTED AND WILL REQUIRE SOME PATIENCE. ALL SCREWS CAN BE FULLY TIGHTENED NOW.



**STEP 6.5** COMPLETE THE WIRING AS PER TJM INSTRUCTIONS. IF FITTING JBA-CB231S SWITCH PLATE, INSTALL USING 2 X JACK BRACKET SCREWS AS SHOWN. CYCLE COMPRESSOR AND CHECK FOR ANY LEAKS.



**STEP 6.6** RE-ASSEMBLE SIDE QUARTER PANEL AND WIPE DOWN VEHICLE AS REQUIRED. FINALLY ENSURE THE AIR OUTLET HAS CORRECT FITMENT/CLEARANCE AND ADJUST IF REQUIRED. (EXAMPLE SHOWN)