

**PRODUCT-** TJM SINGLE/TWIN/TANK COMPRESSOR MOUNTING BRACKET

**VEHICLE-** Y62 PATROL 2013+

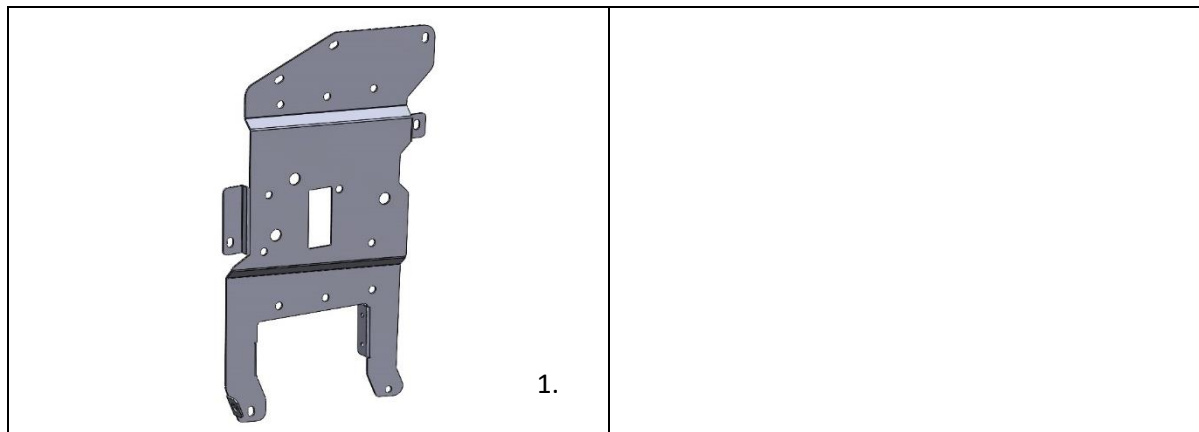
**PART NUMBER-** JBA-CB215, JBA-CB215KIT2, KIT3, KIT 4, KIT 5

### ESTIMATED FIT TIME

- |  |              |
|--|--------------|
| - REMOVAL AND REFIT OF SEAT AND INTERIOR PANELS    | 60-90 MINS   |
| - REMOVAL AND REFIT OF DRAWER SYSTEM (IF REQUIRED) | 60-90 MINS   |
| - PREPARING AND MOUNTING COMPRESSOR                | 60 MINS      |
| - PREPERATION OF TANK (IF REQUIRED)                | 45 MINS      |
| - WIRING COMPRESSOR AND MOUNTING SWITCH            | 120-180 MINS |

### IMPORTANT NOTES

- READ INSTRUCTIONS CAREFULLY PRIOR TO FITMENT
- ENSURE 567 THREAD SEALANT IS APPLIED TO ALL AIR THREADS INSTALLED
- ENSURE THAT ALL TRIM CLIPS ARE REMOVED FROM THE VEHICLE WHEN REMOVING PANELS AND RE-INSERTED BACK INTO THE PANELS BEFORE RE-INSTALLATION (SEE STEPS 1.25-1.27)
- REFER TO TJM COMPRESSOR INSTALLATION INSTRUCTIONS FOR WIRING SPECIFICATION
- NITTO FITTING SUPPLIED SEPERATLEY (NOT BY JBA) AVAILABLE THROUGH TJM STORES P/N 013COMPFP1



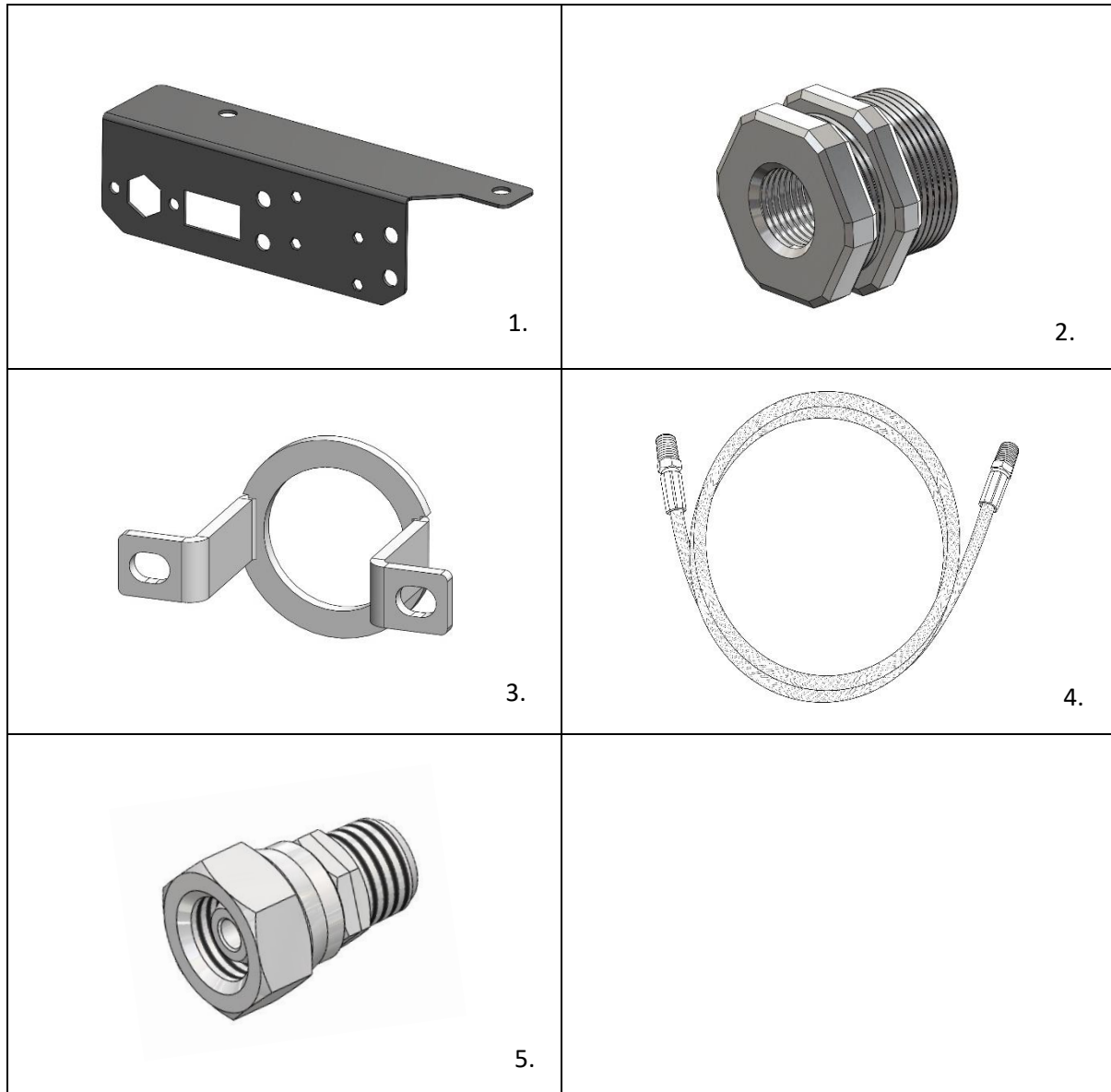
### KIT CONTENTS

ITEM	DESCRIPTION	PART NO.	QTY
1	Y62 PATROL COMPRESSOR/TANK BRACKET	10-CB215RA-A	1
2	M6 x 20MM SEMS ASSMEMBLY Z/Y	B48 0620ZY	5
3	M6 x 30MM SEMS ASSMEMBLY Z/Y	JNS-304	2
4	M6 HEX SERR FLANGE NUT ZY	N24 06ZY	2
5	M6 JACK NUT STEEL	JN6-047	2
6	M8 X 16MM HEX HEAD SET SCREW GR 8.8 316 S/S	X07 80168.8316	6
7	5/16 X 3/4 X 18G FLAT WASHER GR 304 S/S	X79 082018G304	12
8	M8 NYLON INSERT LOCK NUT GR 304S/S	X53 8304	6

## OPTIONAL PARTS- KIT CONTENTS

JBA-CB215KIT2, JBA-CB215KIT4

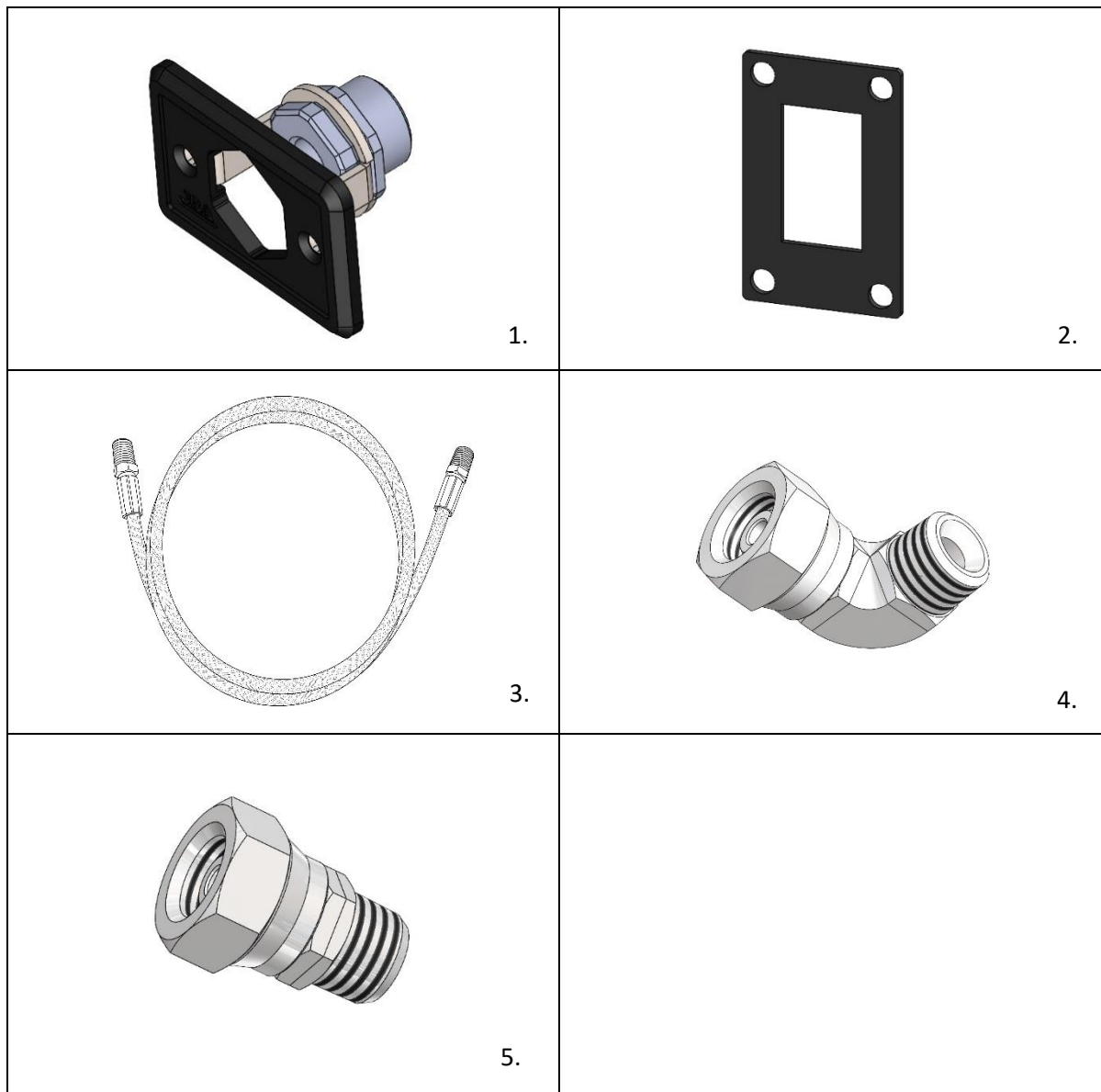
JBA KIT- Y62 PATROL TOOL COMPARTMENT AIR/SWITCH/FUSE OUTLET BRACKET



ITEM	DESCRIPTION	PART NO.	QTY
1	Y62 PATROL TOOL COMPARTMENT OUTLET BRACKET	10-CB215-TASF	1
2	JBA COMPRESSOR BULK HEAD AND NUT	JBA-CB103	1
3	JBA BULK HEAD RECESSED HOUSING BRACKET	10-CB101B	1
4	JBA STAINLESS HOSE 400MM	JBA-CB111	1
5	JBA STAINLESS ELBOW 0 DEGREE	JBA-CB104	2

JBA-CB215KIT3, JBA-CB215KIT5

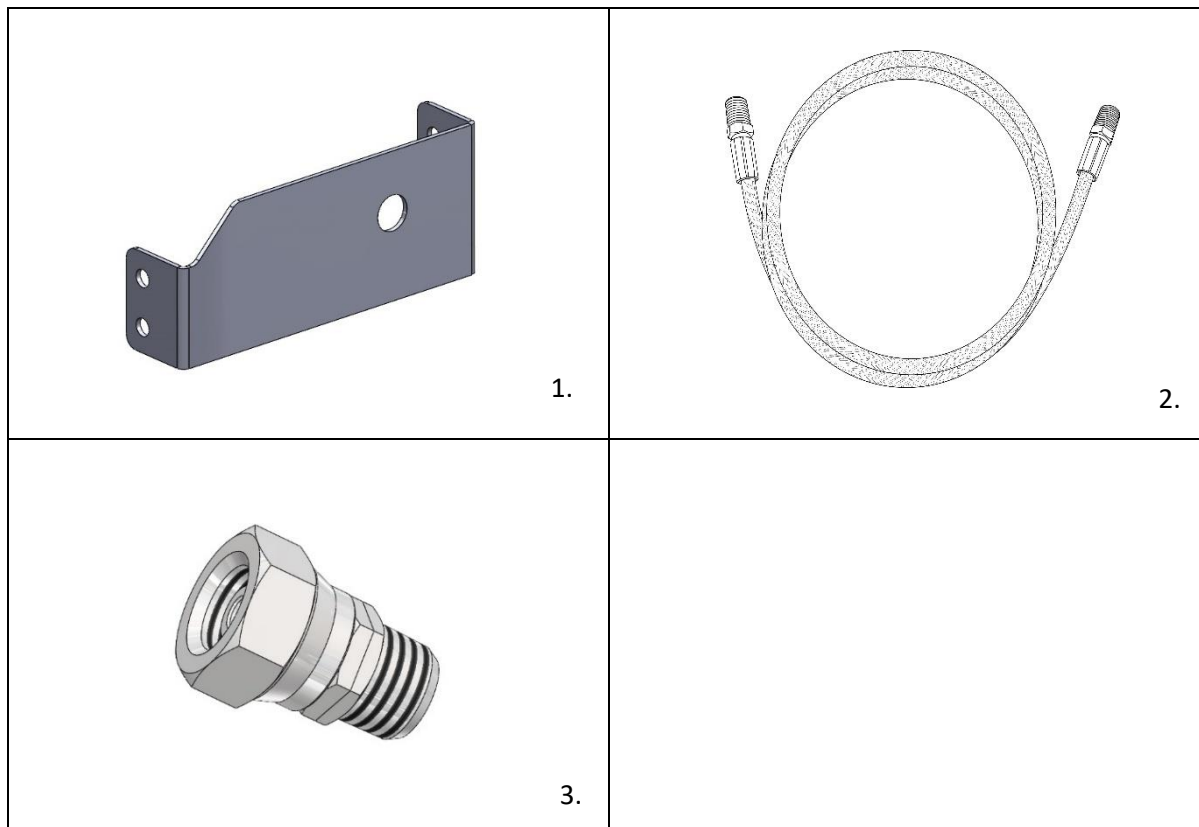
JBA KIT- Y62 PATROL WITH DRAWER FRONT AIR OUTLET AND SWITCH MOUNT



ITEM	DESCRIPTION	PART NO.	QTY
1	JBA BULK HEAD RECESSED FIT PANEL	JBA-CB101	1
2	JBA SWITCH MOUNTING PLATE	JBA-CB901	1
3	JBA STAINLESS HOSE 400MM	JBA-CB111	1
4	JBA STAINLESS ELBOW 90 DEGREE	JBA-CB106	1
5	JBA STAINLESS ELBOW 0 DEGREE	JBA-CB104	1

## OPTIONAL PARTS- KIT CONTENTS

### JBA-CB215TASF QUARTER PANEL AIR/SWITCH/FUSE OUTLET BRACKET



ITEM	DESCRIPTION	PART NO.	QTY
1	Y62 TANK MOUNTING BRACKET	10-CB305	1
2	JBA STAINLESS HOSE 400MM	JBA-CB111	1
3	JBA STAINLESS ELBOW 90 DEGREE	JBA-CB106	2

## 1. PREPARING THE VEHICLE- REMOVING THE SEATS



**STEP 1.1** START AT THE REAR PASSENGER SIDE DOOR, FOLD THE PASSENGER SECOND ROW OF SEATS FORWARD AND REMOVE PLASTIC TRIM LEVERING UP FROM BODY CLIPS AS SHOWN.



**STEP 1.2** REMOVE THE SECOND ROW SEAT BELT USING 14MM SOCKET.



**STEP 1.3** MOVE TO REAR OF THE VEHICLE AND REMOVE REAR STORAGE INSERT.



**STEP 1.4** REMOVE 2 X M6 BOLTS USING 10MM SOCKET AND REMOVE REAR INFILL FROM VEHICLE.



**STEP 1.5** REMOVE 2 X SCREWS IN SIDE INFILL SECTION USING 10MM SOCKET AND REMOVE. CHECK FOR TRIM CLIPS.



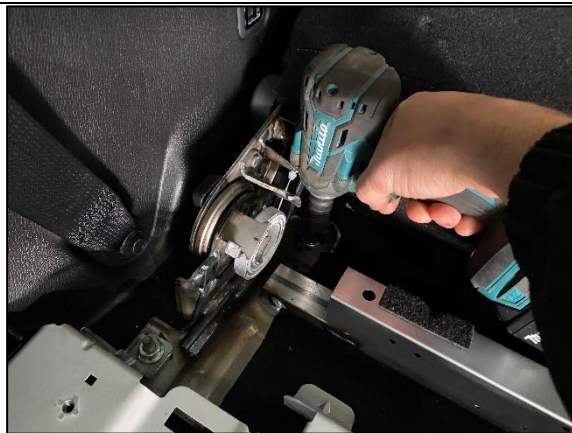
**STEP 1.6** STARTING FROM THE LEFT OR RIGHT SIDE, PULL UP THE REAR PLASTIC TRIM AND WORK ACROSS TO FULLY REMOVE. CHECK FOR ANY TRIM CLIPS.



**STEP 1.7** REMOVE 2 X TIE DOWN POINTS USING 10MM SOCKET. IT IS EASIER TO POP THE PLASTIC INNER COVER THROUGH THE TIEDOWN AS SHOWN TO ACCESS THE BOLT.



**STEP 1.8** STARTING FROM THE LEFT SIDE, START PULLING UP THE CARPETED PANEL AND WORK ACCROSS. CHECK FOR TRIM CLIPS.



**STEP 1.9** REMOVE BOLTS FROM PASSENGER SIDE REAR SEAT USING 14MM SOCKET AND PULL SEAT OUT.



**STEP 1.10** REMOVE PASSENGER SIDE REAR SEAT BELT USING 14MM SOCKET.



**STEP 1.11** REMOVE 2 X TIE DOWN POINTS USING 10MM SOCKET ON PASSENGER SIDE QUARTER PANEL AS SHOWN.



**STEP 1.12** REMOVE REAR TRIM CLIP NEXT TO 12V SOCKET AS SHOWN.



**STEP 1.13** MOVE BACK TO PASSENGER SIDE REAR DOOR AND BEGIN PULLING QUARTER PANEL BACK. WORK YOUR WAY FROM BOTTOM TO TOP.



**STEP 1.14** MOVE TO THE BACK OF THE VEHICLE AND PULL BACK THE REAR DOOR SEAL.



**STEP 1.15** START PULLING QUARTER PANEL BACK AGAIN WORKING FROM BOTTOM TO TOP. THE FIRST 1-2 TRIM CLIPS MAY BE A BIT FIRM BUT THEY WILL POP AND BECOME EASIER



**STEP 1.16** START WORKING ALONG THE TOP OF THE PANEL ALONG THE BOTTOM OF THE WINDOW. PUSH ON THE TOP PANEL TO SEPERATE IF REQUIRED.



**STEP 1.17** THE QUARTER PANEL SHOULD BE FREE NOW. UNPLUG THE 12V SOCKET FROM THE REAR AND CAREFULLY REMOVE THE QUARTER PANEL FROM THE VEHICLE. CHECK FOR ANY TRIM CLIPS IN THE BODY (REFER TO STEPS 1.25-1.27 BELOW)



**STEP 1.18** GRAB THE TAB SHOWN AND BEND WITH PLIERS AS SHOWN TO MAKE CLEARANCE FOR THE BRACKET INSTALLATION.



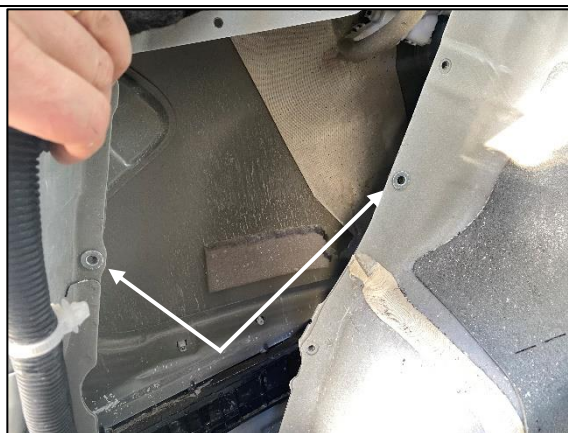
**STEP 1.19** TAB SHOWN BENT BACK



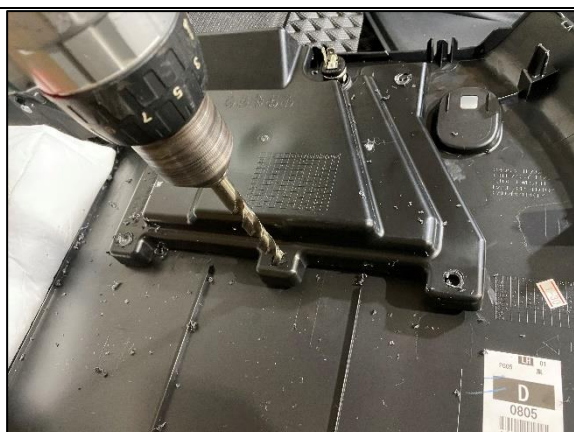
**STEP 1.20** DRILL OUT THE MIDDLE HOLE IN THE POSITION SHOWN TO 12MM.



**STEP 1.21** PULL BACK THE 3 X PLASTIC RETAINING CLIPS HOLDING IN THE MAIN BODY LOOM DRILL OUT THE MIDDLE SLOTTED HOLE ON THE LEFT HAND SIDE TO 12MM AS SHOWN



**STEP 1.22** INSERT THE 2 X M6 JACK NUTS IN TO THE DRILLED OUT HOLES.



**STEP 1.23** IF THE QUARTER PANEL HAS A REAR POCKET, DRILL THE PLUGS OUT AND REMOVE THE POCKET.



**STEP 1.24** MARK AND TRIM THE SOUND DEADENING ON THE REAR QUARTER PANEL AS SHOWN.



## REFERENCE PICS FOR TRIM CLIPS



**STEP 1.25** REFERENCE PICS FOR TRIM CLIP (EXAMPLE ONLY). AS YOU ARE REMOVING PANELS, KEEP NOTICE OF ANY CLIPS THAT HAVE REMAINED IN THE VEHICLE- NORMALLY WHITE OR GREEN AS SHOWN.



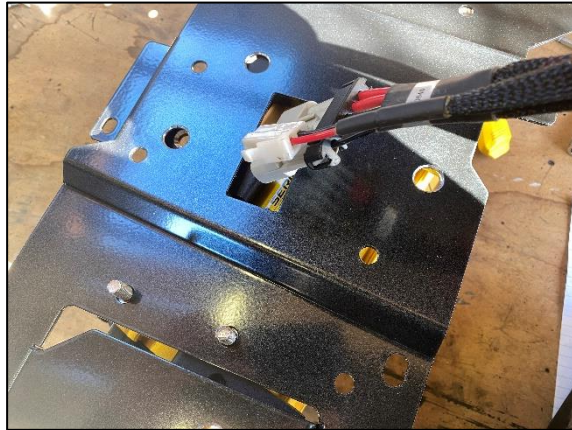
**STEP 1.26** USE A TRIM CLIP REMOVER TO POP OUT OF THE VEHICLE AS SHOWN.



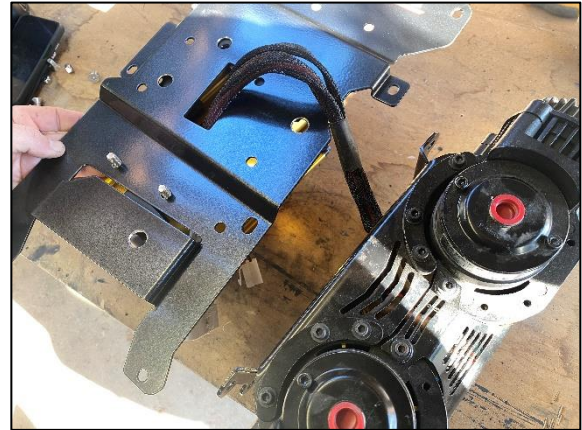
**STEP 1.27** RE-INSERT INTO THE PLASTIC TRIM PANEL LOCATION. THEY WILL NORMALLY SLIDE IN AND POP INTO POSITION. THESE STEPS WILL ENSURE AN EASIER RE-INSTALLATION OF THE PANELS LATER.

## 2. PREPARING COMPRESSOR AND BRACKET (NON TANK INSTALLATION)

### 2.1 TWIN COMPRESSOR INSTALL



**STEP 2.1.1** FEED THE COMPRESSOR WIRING LOOM THROUGH THE CENTRE HOLE AS SHOWN



**STEP 2.1.2** PULL THE WIRING HARNESS THROUGH



**STEP 2.1.3** ATTACH THE TOP 3 MOUNTING POSITIONS USING M8 X 16 SCREWS WITH A WASHER UNDER THE HEAD AND FASTEN WITH M8 NYLOC NUT WITH WASHER FROM THE OTHER SIDE.

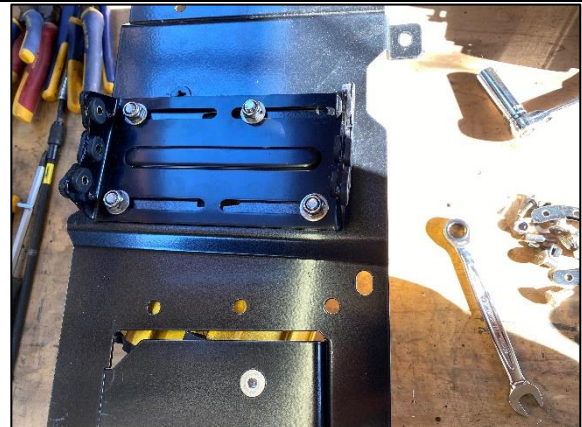


**STEP 2.1.4** REPEAT THE MOUNTING PROCESS FOR THE BOTTOM 3 MOUNTING POSITIONS. NOTE THE TANK MOUNTING BRACKET SHOWN WONT BE PART OF THE NON AIR TANK STEPS OUTLINED IN THESE STEPS.

## SINGLE COMPRESSOR INSTALL



**STEP 2.2.1** SEPERATE THE COMPRESSOR FROM THE BASE BRACKET



**STEP 2.2.2** ATTACHE THE TJM BRACKET TO THE COPMPRESSOR BRACKET USING M8 X 16 SCRESS WITH WASHER UNDER THE HEAD AND M8 NYLOC WITH WASHER FROM THER OTHER SIDE.



**STEP 2.2.3** RE-ATTACH THE TJM COMPRESSOR TO THE BASE BRACKET IN THE ORIENTATION SHOWN

## 3. PREPARING THE TANK, COMPRESSOR AND BRACKET (AIR TANK INSTALLATION)

### 3.1 PREPARE THE TANK AND BRACKET



**STEP 3.1.1** REMOVE ALL THE LEGS FROM THE COMPRESSOR AND ORIENTATE SO THE TJM STICKER IS FACING UP AND THE BOTTOM DRAIN PLUG IS FACING TOWARDS YOU AS SHOWN.



**STEP 3.1.2** IF FITTING A DRAIN HOSE, SCREW IN THE 1/8 FITTING TO THE OUTLET AS SHOWN.



**STEP 3.1.3** RE-ATTACH THE TOP LEGS. LINE THE LEG UP WITH WHERE THE GOLD BODY MEETS THE BLACK END CAPS.



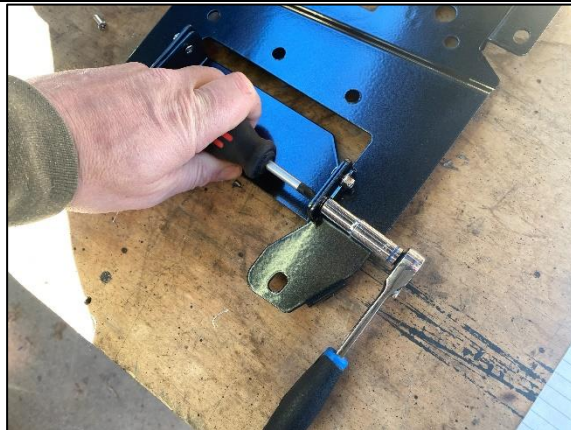
**STEP 3.1.4** SLIDE THE BOTTOM END LEGS ON. ALIGN THE UPPER SET OF LEGS 140MM APART (165MM CENTRE TO CENTRE)



**STEP 3.1.5** ADJUST THE BOTTOM SET OF LEGS TO 42.5MM APART (67.5MM CENTRE TO CENTRE)



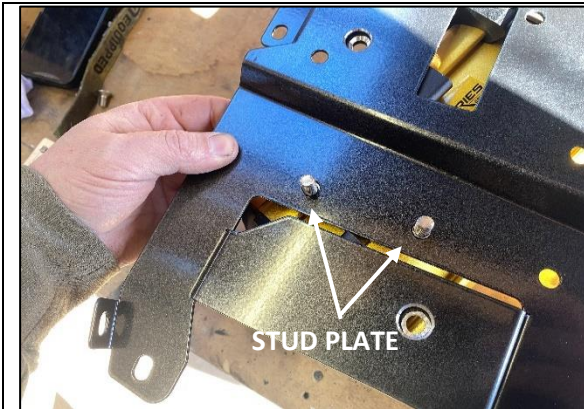
**STEP 3.1.6** USING A LARGE COUNTERSINK BIT, COUNTERSINK EACH OF THE LEGS AS SHOWN TO ALLOW THE M8 SCREW TO SIT FLUSH.



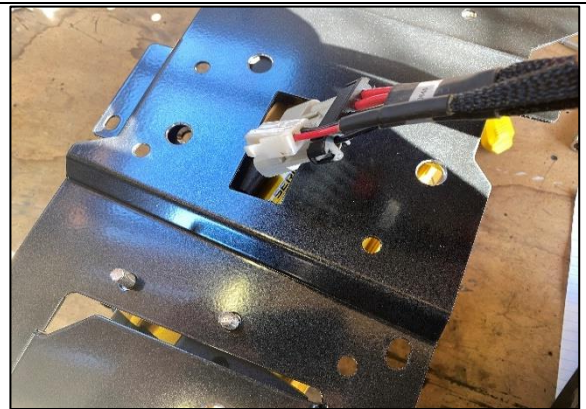
**STEP 3.1.7** ATTACH JBA-CB305 TANK BRACKET USING M4 X 16 CSK HEAD SCREWS AND M4 FLANGE NYLOC (REAR OF BRACKET SHOWN)

**STEP 3.1.8** FLIP THE BRACKET OVER AND PLACE THE TANK UNDERNEATH TO CHECK FOR HOLE ALIGNMENT OF TANK FEET AND ADJUST POSITIONS IF REQUIRED. CHECK THE M8 SCREWS SIT FLAT AND COUNTERSINK TANK FEET IF REQUIRED. (**DON'T ATTACH TANK YET**)

## 3.2 INSTALLING TWIN COMPRESSOR



**STEP 3.2.1** INSERT MOUNTING STUD PLATE FROM UNDERNEATH TO THE BOTTOM LEFT LOCATIONS AS SHOWN



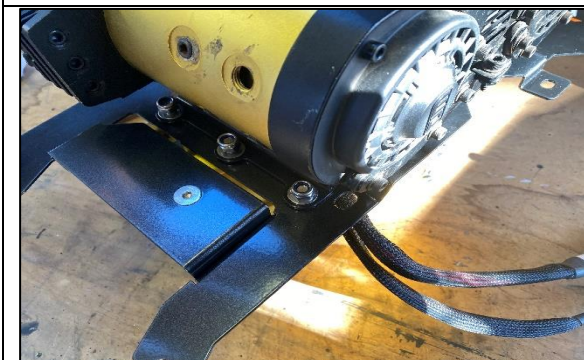
**STEP 3.2.2** FEED THE WIRING HARNESS THROUGH AS SHOWN



**STEP 3.2.3** PULL THE WIRING HARNEED THROUGH SO YOU HAVE SLACK AND CAN ADJUST IN LATER STEPS.  
NOW ATTACH THE TANK TO THE BRACKET USING M8 COUNTERINK HEAD SCREWS FROM TOP AND M8 NYLOIC AND WASHER FROM UNDERNEATH.



**STEP 3.2.4** ATTACH THE TOP 3 MOUNTING POSTIONS USING M8 X 16 SCREWS WITH A WASHER UNDER THE HEAD AND FASTEN WITH M8 NYLOC NUT WITH WASHER FROM THE OTHER SIDE.

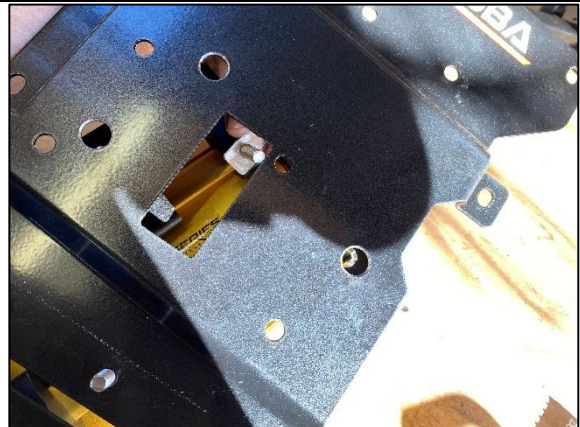


**STEP 3.2.5** ATTACH THE BOTTOM 3 MOUNTING POSITIONS USING 1 X M8 SCREW WITH WASHER ON THE RIGHT LOCATION AND THE STUD PLATE PREVIOUSLY INSTALLED IN STEP 3.8 FOR THE CENTRE AND LEFT WITH M8 NYLOC AND WASHERS.

## 3.3 SINGLE COMPRESSOR INSTALL



**STEP 3.3.1** SEPERATE THE COMPRESSOR FROM THE BASE BRACKET



**STEP 3.3.2** INSERT THE SINGLE STUD FROM UNDENEATH THE BRACKET IN THE LOCATION SHOWN. THE STUD WILL SIT IN BETWEEN THE TANK FEET WHEN LOWERED BACK DOWN.



**STEP 3.3.3** INSTALL THE TJM COMPRESSOR BASE TO THE JBA BRACKET USING M8 X 16 SCREW WITH WASHER UNDER THE HEAD AND M8 NYLOC WAHSER FROM THE OTHER SIDE

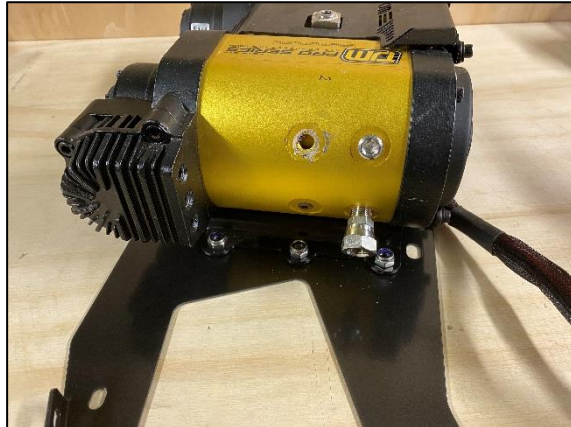


**STEP 3.3.4** RE-ATTACHE THE TJM COMPRESSOR TO THE BASE BRACKET IN THE ORIENTATION SHOWN

**4. OPTIONAL STEPS IF FITTING JBA KITS 2,3,4 AND 5 (ENSURE 567 THREAD SEALANT USED ON ALL JOINS)**

**4.1 INSTALLATION OF AIR OUTLETS TO TJM COMPRESSOR**

**A1- KIT 2 AND 3 TWIN COMPRESSOR NO TANK**



**STEP 4.1A1.1** FIT JBA-CB104 0 DEGREE ELBOW TO THE BOTTOM REAR 1/4 INCH OUTLET AS SHOWN



**STEP 4.1A.2** CONNECT JBA-CB111 400MM HOSE

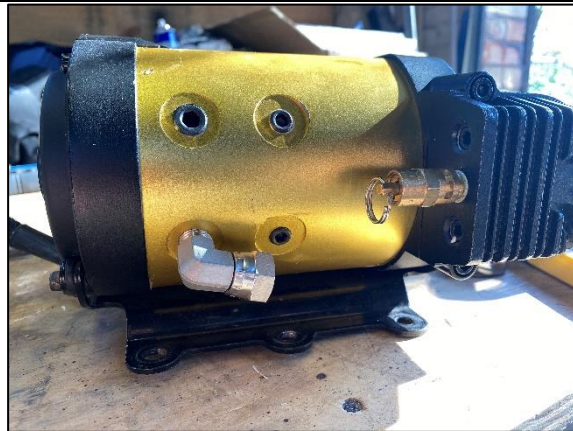
**A2- KIT 2 AND 3 SINGLE COMPRESSOR NO TANK**

**STEP 4.1A2.1** FIT JBA-CB104 0 DEGREE ELBOW TO THE BOTTOM REAR 1/4 INCH OUTLET AS SHOWN

**STEP 4.1B.2** CONNECT JBA-CB111 400MM HOSE



## B1- KIT 4 AND 5 TWIN COMPRESSOR WITH AIR TANK



**STEP 4.1B1.1** FIT JBA-CB106 90 DEGREE ELBOW TO THE TOP OF THE COMPRESSOR IN THE LOCATION AND ORIENTATION SHOWN



**STEP 4.1B1.2** FIT JBA-CB106 90 DEGREE ELBOW TO THE TOP OF THE TANK AND CONNECT JBA-CB-111 400MM HOSE AS SHOWN



**STEP 4.1B1.3** FIT JBA-CB1.6 90 DEGREE ELBOW TO THE BOTTOM OF THE TANK AND FACE FORWARD (TOWARDS BRACKET)

**STEP 4.1B1.4** CONNECT JBA-CB111 400MM HOSE

## B2- KIT 4 AND 5 SINGLE COMPRESSOR WITH AIR TANK



**STEP 4.1B2.1** FIT JBA-CB106 90 DEGREE ELBOW TO THE BOTTOM OF THE COMPRESSOR IN THE ORIENTATION SHOWN AND CONNECT JB-CB111 400MM HOSE.



**STEP 4.1B2.2** FIT JBA-CB106 90 DEGREE ELBOW TO THE TOP OF THE TANK AND CONNECT HOSE AS SHOWN.

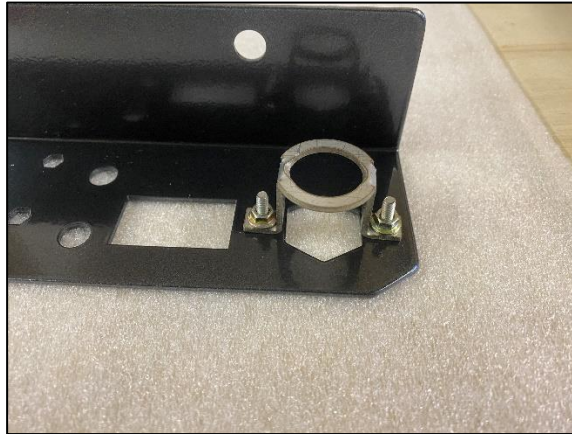


**STEP 4.1B2.3** FIT JBA-CB1.6 90 DEGREE ELBOW TO THE BOTTOM OF THE TANK AND FACE FORWARD (TOWARDS BRACKET)

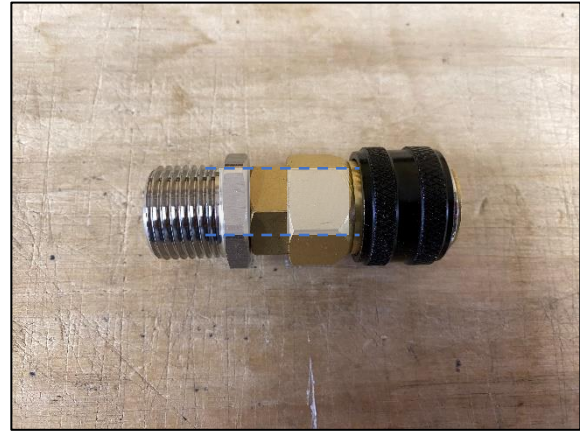
**STEP 4.1B2.4** CONNECT JBA-CB111 400MM HOSE

## 4.2 OPTIONAL STEPS FOR AIR AND SWITCH OUTLET MOUNTING LOCATIONS

### 2A- INSTALLATION OF JBA-CB215TASF TOOL COMPARTMENT MOUNTING BRACKET (KIT 2 AND 4)



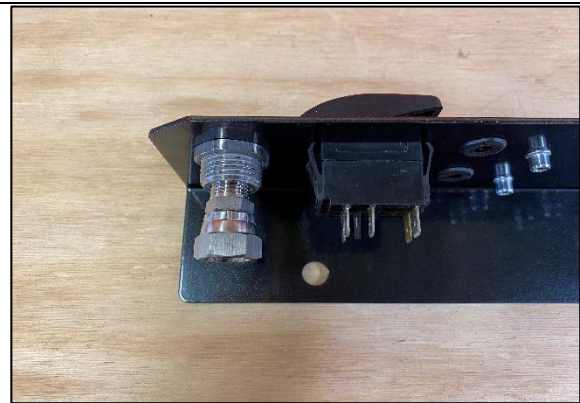
**STEP 4.2A.1** INSTALL THE JBA-CB101B HOUSING TO THE REAR OF THE BRACKET AS SHOWN USING M4 X 12 CSK AND FLANGED NYLOC.



**STEP 4.2A.2** FIT THE TJM NITTO FITTING (NOT SUPPLIED BY JBA) TO JBA-CB103 BULKHEAD. ENSURE FLAT FACES ALIGN AS SHOWN.



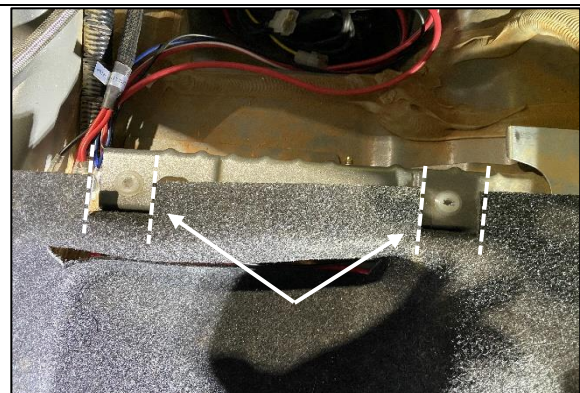
**STEP 4.2A.3** INSTALL THE NITTO FITTING IN TO THE HOUSING BRACKET AND TIGHTEN THE NUT FROM BEHIND AS SHOWN (**ENSURE LOCTITE IS APPLIED TO THE NUT**).



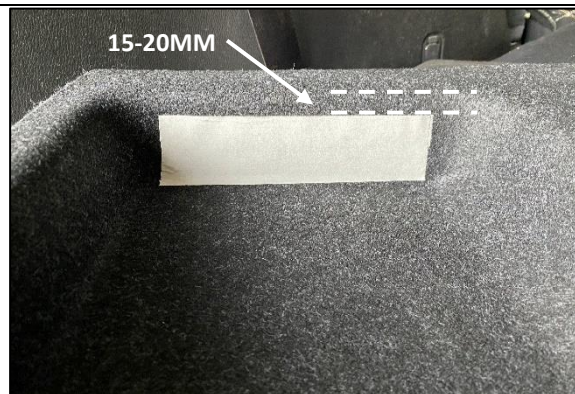
**STEP 4.2A.4** INSTALL THE JBA-CB104 0 DEGREE ELBOW TO THE BULKHEAD AS SHOWN.



**STEP 4.2A.5** INSTALL CARLING SWITCH AND ANSH FUSE HOLDERS (SUPPLIED WITH TJM COMPRESSOR) USING M4 X 12 SCREWS.



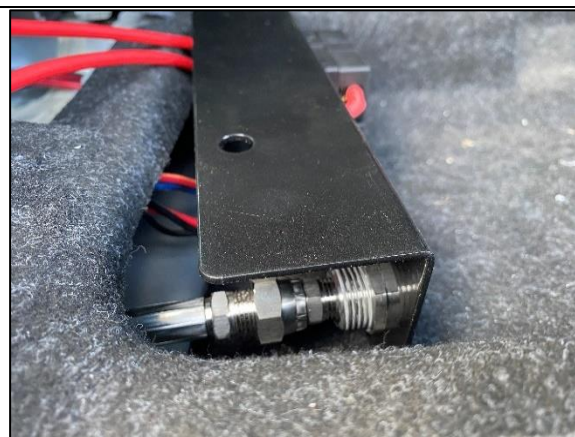
**STEP 4.2A.6** POSITION THE NISSAN TOOL COMPARTMENT CARPET BACK IN PLACE AND TRIM EITHER SIDE OF BODY PLUGS AS SHOWN AND FOLD CARPET BACK.



**STEP 4.2A.7** CUT A HOLE OUT OF THE END OF THE CARPET APPROX 15-20MM FROM ALL EDGES AS SHOWN



**STEP 4.2A.8** ONCE THE COMPRESSOR BRACKET IS INSTALLED IN THE CAR, FEED THE AIRLINE, SWITCH LOOM AND FUSE WIRES THROUGH THE HOLE JUST CUT IN STEP 4.4.



**STEP 4.2A.9** CONNECT UP THE AIRLINE AND SWITCH LOOM TO JBA-CB215TASF BRACKET AS SHOWN



**STEP 4.2A.10** FEED THE POWER WIRE THROUGH EITHER SIDE OF THE FUSE, TERMINATE AND HEAT SHRINK. INSTALL THE BRACKET TO THE BODY PLUGS EXPOSED IN STEP 4.3 USING 14G X 1 CSK PHIL SELF TAPPER.

## 2B- INSTALLATION DRAWER FRONT AIR OUTLET AND SWITCH PLATE (KIT3 AND KIT 5)



**STEP 4.2B.1** PREPARE DRAWER FRONT OUTLET FOLLOWING JBA-CB101 INSTRUCTIONS. INSTALL JBA-CB106 90 DEGREE ELBOW TO REAR OF DRAWER FRONT AND TIGHTEN FACING DOWN (BOTTOM OF DRAWER FRONT). CONNECT 400MM HOSE.



**STEP 4.2B.2** PREPARE SWITCH PANEL AS PER INSTRUCTIONS AND RUN WIRES TO LENGTH.

## 5. PREPERATION AND INSTALLATION INTO VEHICLE



**STEP 5.1** IF FITTING A BRACKET WITH A TANK, FEED THE LEFT HAND SIDE IN FIRST, LIFT UP AND THEN THEN FEED IN THE RIGHT AS SHOWN.



**STEP 5.2.** FIT THE TOP 3 M6 X 20 SEMS SCREWS FINGER TIGHT AS SHOWN.



**STEP 5.3** INSTALL THE BOTTOM 2 M6 X 20 SEMS SCREWS WITH M6 WHIZZ NUT FROM THE REAR FINGER TIGHT .



**STEP 5.4** INSTALL THE M6 X 25 SEMS SCREWS TO THE MIDDLE LEFT AND RIGHT JACK NUTS PREVIOUSLY INSTALLED IN STEP 1.22 ABOVE. USING A DRILL WITH AN EXTENSION, PULL THESE JUCK NUTS UP SO THEY FLANGE FROM THE REAR LIKE A RIVET AS YOU TIGHTEN. YOU WILL FEEL WHEN THEY ARE FULLY PULLED UP.



**STEP 5.5** FULL TIGHTEN ALL SCREWS NOW .



**STEP 5.6** CUT THE MIDDLE BODY CLIP AS SHOWN AND REMOVE



**STEP 5.7** RECLIP THE TOP MAIN BODY LOOM REMOVED IN STEP 1.21 TO THE ORIGINAL BODY LOCATION



**STEP 5.8** RE-CLIP THE BOTTOM CLIP TO THE TAB ON THE JBA COMPRESSOR BRACKET AS SHOWN



**STEP 5.9** NEATLY CABLE TIE AND LOOSE LOOMS AND AIR LINES. TEST ALL AIR CONNECTIONS FOR AIR LEAKS AND CYCLE COMPRESSOR CHECKING ELECTRICAL FUNCTIONALITY.



**STEP 5.10** REFIT REAR QUARTER PANEL AND SEATS REFERING TO STEPS 1.1-1.22 ABOVE IF REQUIRED. VACUUM AND WIPE DOWN ALL SURFACES.