

PRODUCT- REAR TAILGATE LED LIGHT

VEHICLE- 300 SERIES LANDCRUISER 2021+

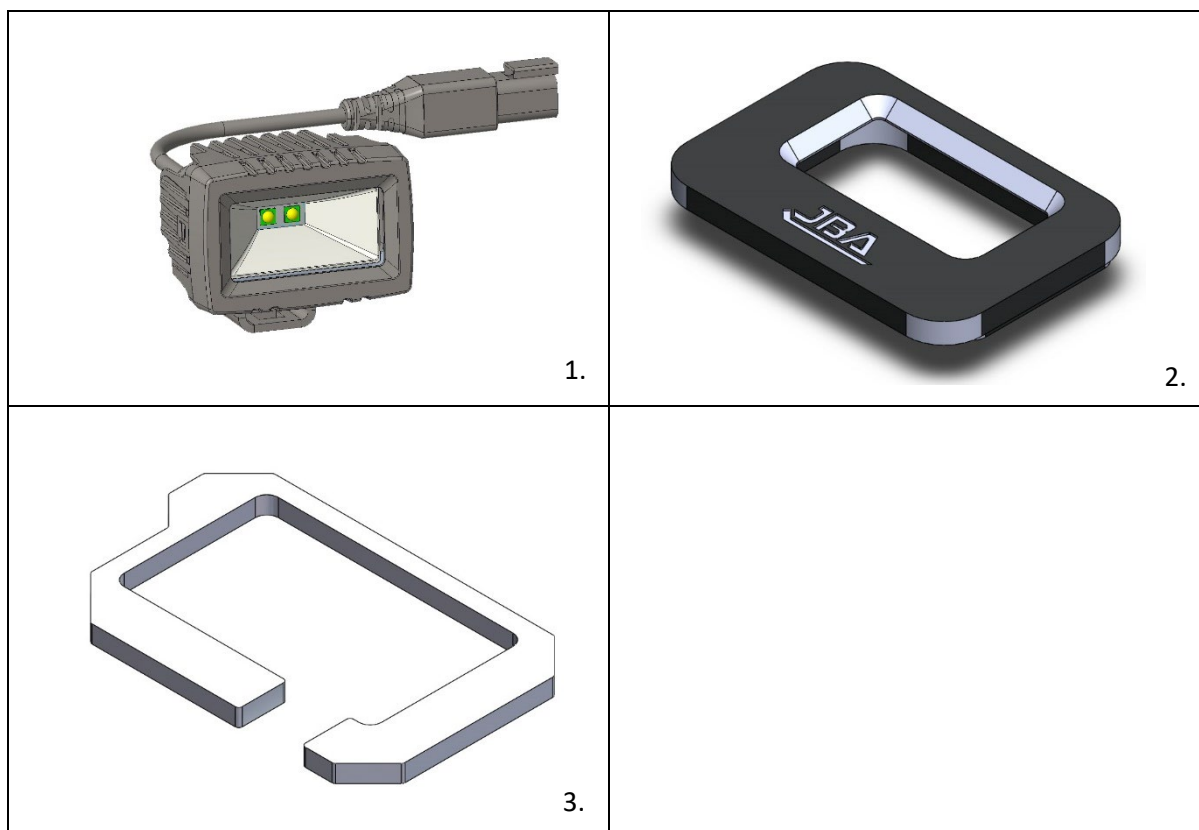
PART NUMBER- JBA-LB804D

ESTIMATED FIT TIME

- FITMENT OF LED LIGHT 45-60 MINS
- ELECTRICAL WIRING AND FITMENT OF SWITCHES 60-120MINS

IMPORTANT NOTES

- READ INSTRUCTIONS CAREFULLY PRIOR TO FITMENT
- SET ALL REMOVED PARTS ASIDE ON A SOFT CLEAN SURFACE FOR RE-INSTALLATION
- ENSURE THAT ALL TRIM CLIPS ARE REMOVED FROM THE VEHICLE WHEN PULLING PANELS OUT AND RE-INSERTED BACK INTO THE PANELS BEFORE RE-INSTALLATION (SEE STEPS 1.7-1.8)



KIT CONTENTS

ITEM	DESCRIPTION	PART NO.	QTY
1	JBA 300 SERIES REAR TAILGATE LIGHT	10-LB804D	1
2	JBA 300 SERIES REAR TAILGATE LIGHT FASCIA	10-LB804A	1
3	JBA 300 SERIES REAR TAILGATE LIGHT REAR SPACER 2.5MM	10-LB804B	2

1. PREPARING THE VEHICLE



STEP 1.1 REMOVE 2 X REAR HANDLE INSERTS PULLING DOWN FROM THE TOP CENTRE AND LEVERING FORWARD. FOR AUTO TAILGATE MODELS, UNCLIP THE POWER PLUGS ON DRIVERS SIDE.



STEP 1.2 USING A PLASTIC TRIM TOOL, LEVER THE CENTRE LATCH COVER AND REMOVE.



STEP 1.3 SEPARATE THE MID SECTION FROM THE REAR SECTION AS SHOWN KEEPING NOTE OF HOW THE TWO SECTIONS INTERLOCK FOR REINSTALL LATER.



STEP 1.4 COMPLETELY UNCLIP THE MID AND REAR SECTIONS AS SHOWN. YOU CAN EITHER LEAVE THIS SECTION HANGING DOWN OR DISCONNECT THE BRAKE LIGHT AND FULLY REMOVE WHICH WILL MAKE WIRING EASIER LATER.



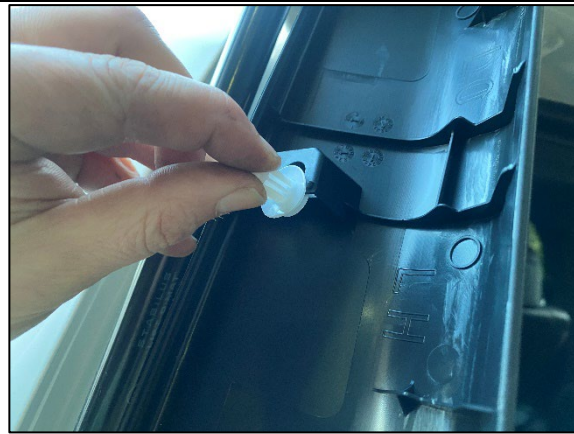
STEP 1.5 START PULLING THE REAR SECTION DOWN FROM THE REAR HANDLE INSERT SECTION (STEP 1.1) TO ENABLE A GRIP ON THE TRIM FOR NEXT STEP.



STEP 1.6 START FROM THE CORNER AND BEGIN PULLING DOWN POPPING THE TRIM CLIPS. THESE WILL BE FIRM BUT WILL POP. WORK YOUR WAY ACROSS THE REAR, FULLY REMOVE PANEL AND LAY ON A SOFT CLEAN SURFACE.



STEP 1.7 AT THIS STAGE, QUICKLY CHECK IF ANY TRIM CLIPS HAVE REMAINED IN THE VEHICLE AND REMOVE WITH TRIM CLIP REMOVER.



STEP 1.8 RE-INSERT CLIPS INTO THE PLASTIC TRIM PANEL LOCATION. THEY WILL NORMALLY SLIDE IN AND POP INTO POSITION. THIS STEP WILL ENSURE AN EASIER RE-INSTALLATION OF THE PANELS LATER.



STEP 1.9 ON THE REAR PANEL, REMOVE THE PLASTIC COVER AND MARK THE INFILL SECTION FOR CUTTING AS SHOWN.



STEP 1.10 CAREFULLY TRIM THE MARKED OUT SECTIONS WITH A STANLEY KNIFE AS SHOWN. TAKE CARE NOT TO CUT OR SCRATCH THE TOP SURFACE WHILE CUTTING.

1.1 ADDITIONAL STEPS ONLY REQUIRED FOR AUTO TAILGATE MODELS



STEP 1.1.1 REMOVE THE WHITE PLASTIC COVER ON THE AUTO LOCKING LOCK AS SHOWN.

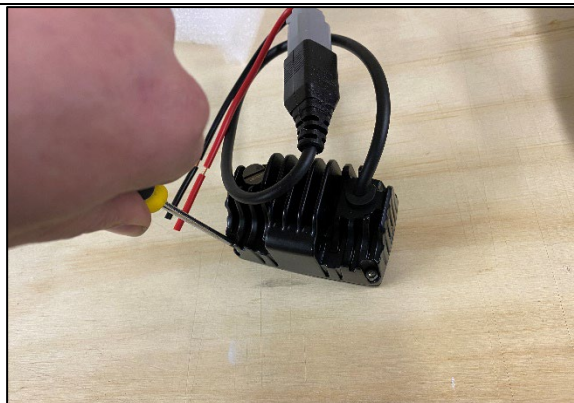


STEP 1.1.2 THE SECTIONS OUTLINED IN WHITE NEED TO BE REMOVED, NOTE AND MARK THE AREAS SHOWN.



STEP 1.1.3 TRIM BACK THE RAISED SECTIONS MARKED IN PREVIOUS STEP SO THEY ARE COMPLETELY FLAT AS SHOWN.

2. INSTALLING THE LIGHT



STEP 2.1 REMOVE 4 X 2.5MM ALLEN KEY SCREWS FROM THE REAR OF THE LIGHT.



STEP 2.2 SEPARATE THE FRONT METAL FASCIA AND DISCARD (KEEP THE SCREWS AND PLASTIC LENS).



STEP 2.3 PRESS THE JBA FASCIA (JBA-LB804A) INTO THE REAR TAILGATE SECTION AS SHOWN. NOTE THE ORIENTATION, ENSURE THE CUT OUT FOR THE LIGHT IS FACING TOWARDS THE TOP AS SHOWN.



STEP 2.4 PLACE REAR SPACER X 2 (JBA-LB804B) OVER FASCIA AS SHOWN.



STEP 2.5 INSERT LIGHT INTO FASCIA AS SHOWN ENSURING THE MACHINED FACE OF THE LED IS IN THE ORIENTATION SHOWN (TOWARDS THE BOTTOM OF THE DOOR).



STEP 2.6 RE INSTALL 4 X 2.5MM SCREWS REMOVED IN STEP 2.1 AND ENSURE LIGHT IS SITTING FLAT AND TIGHT.

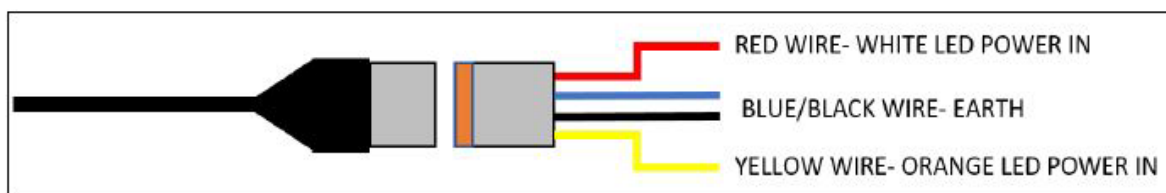
3. PREPARING THE SWITCHING OPTION

JBA HAVE 3 DIFFERENT SWITCH MOUNTING OPTIONS. PLEASE REFER TO THE RELEVANT SWITCH OPTION FOR YOUR INSTALLATION. **ENSURE THAT AN INLINE FUSE RATED TO 5 AMPS IS INSTALLED FOR ALL APPLICATIONS.**

IF NOT UTILISING ANY OF THE JBA SWITCHING OPTIONS OR THE JBA FACTORY POWER HARNESS (SEE STEPS 4.1-4.8 AND NOTES BELOW FOR FACTORY POWER HARNESS IMPORTANT NOTES), PLEASE NOTE THE FOLLOWING IMPORTANT INFORMATION

- A NEW POWER WIRE WILL BE REQUIRED TO BE RUN FROM THE VEHICLE INTO THE TAILGATE AS THERE IS NO WIRING IN THE TAILGATE THAT CAN BE USED TO POWER THE 5A LED. 4MM WIRE IS RECOMMENDED.
- EITHER A 3 WAY SWITCH OR TWO SEPARATE SWITCHES AND WIRES WILL BE REQUIRED. IF WIRING USING NON SUPPLIED SWITCHES, ENSURE THE SWITCHES ARE RATED TO A MINIMUM 5A, IF SWITCHES ARE RATED BELOW 5A, A RELAY WILL BE REQUIRED.

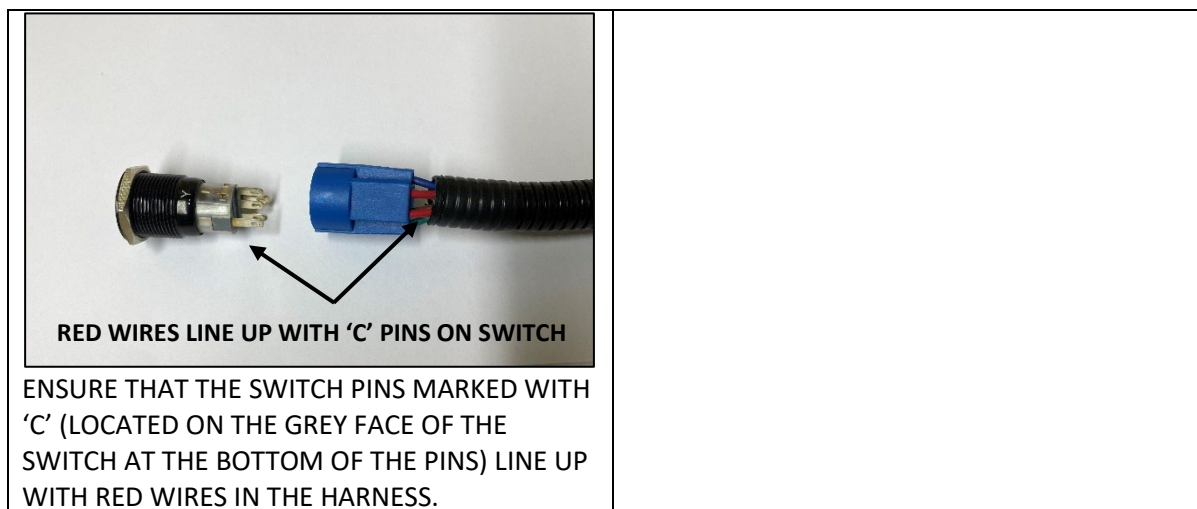
GENERIC WIRING DIAGRAMS FOR NON JBA OPTIONAL SWITCHES



3.1 JBA 3 WAY ILLUMINATED TOGGLE SWITCH

THE JBA 3 WAY SWITCH HAS 3 SUGGESTED LOCATIONS. REFER TO THE RELEVANT LOCATION IN THE STEPS BELOW.

IN ALL INSTALL SITUATIONS, PLEASE REFER TO THE FOLLOWING INSTRUCTIONS FOR PLUGGING THE JBA HARNESS INTO THE SWITCH.

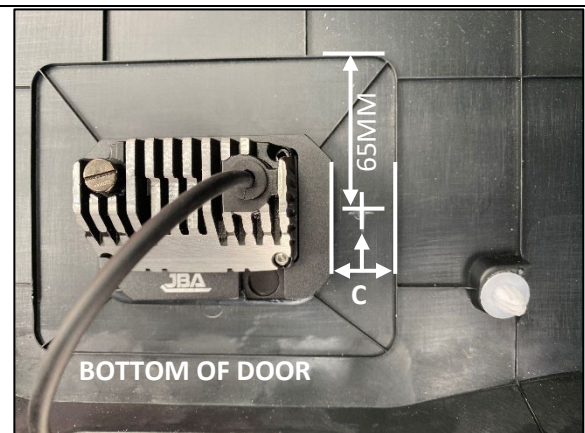


3.1.1 OPTION 1- NEXT TO THE LIGHT DRIVERS SIDE

NOTE THIS LOCATION IS THE PREFERRED OPTION FOR EASE OF ACCESS CAN BE PRONE TO DAMAGING THE SWITCH IF THE REAR BOOT AREA IS REGULARLY FILLED WITH UNRESTRAINED ITEMS.



STEP 3.1.1 THE FINAL LOCATION OF THE SWITCH SHOWN FOR REFERENCE.



STEP 3.1.2 THE SUGGESTED POSITION OF THE 19M SWITCH IS TO THE DRIVERS SIDE NEXT TO THE LIGHT. IF FITTING TO A VEHICLE WITH AUTO TAILGATE MECHANISM, IT WILL NOT FIT TO THE PASSENGER SIDE DUE TO INTERFERENCE WITH SURROUNDING PARTS. MARK THE LOCATION AS PER DIAGRAM SHOWN.



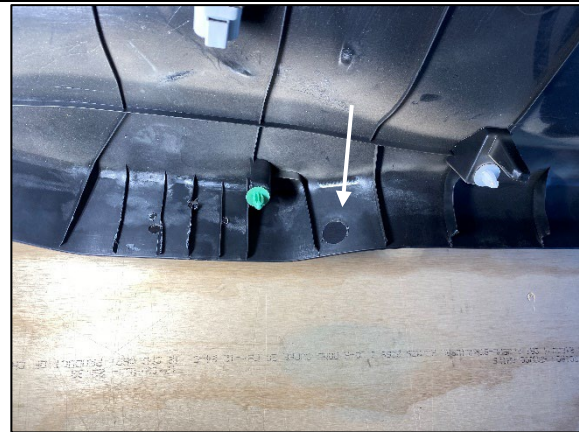
STEP 3.1.3 DRILL THE SWITCH HOLE OUT TO 20MM USING STEP DRILL AS SHOWN. INSERT THE SWITCH AND TIGHTEN NUT FROM BEHIND.

3.1.2 OPTION 2- IN THE TAILGATE NEXT TO THE GLASS PASSENGER SIDE

NOTE THIS LOCATION IS NOT AS EASY TO ACCESS AS OPTION 1 BUT IS MORE PROTECTED FROM POTENTIAL DAMAGE TO THE SWITCH AND MORE HIDDEN OUT OF THE WAY.



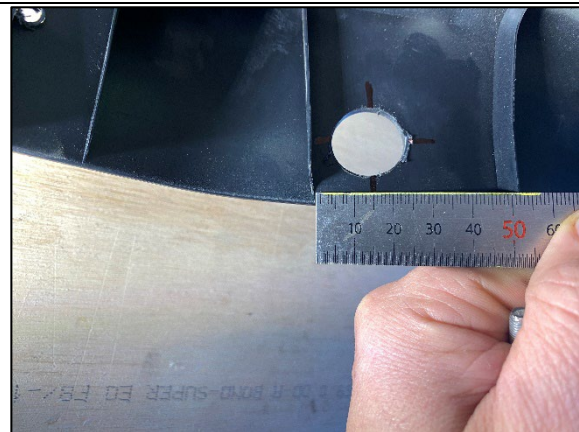
STEP 3.2.2 THE FINAL LOCATION OF THE SWITCH SHOWN FOR REFERENCE.



STEP 3.2.2 USE THE FOLLOWING PICTURE TO



STEP 3.2.3 MARK THE CENTRE 20MM FROM THE BOTTOM LIP.



STEP 3.2.4 MARK THE CENTRE 17.5MM FROM THE LEFT AS SHOWN.



STEP 3.2.5 DRILL THE HOLE OUT 20MM AND INSTALL THE SWITCH WITH NUT FROM REAR AS SHOWN.



STEP 3.2.6 CONNECT WIRING HARNESS.

3.1.3 OPTION 3- IN THE VEHICLE BOOT AREA (FOR EXAMPLE ON A DRAWER FRONT)

IF THE SWITCH IS LOCATED FURTHER AWAY THAN THE PASSENGER SIDE DRAWER FRONT AND NOT CONNECTED TO THE JBA FACTORY POWER HARNESS AS SHOWN BELOW, **THE JBA-LBWH8 3M EXTENSION HARNESS** CAN BE PURCHASED SEPARATELY TO ALLOW FOR THE FOLLOWING CIRCUMSTANCES

- CONNECTING TO A SECOND BATTERY
- MOUNTING THE SWITCH ON THE DRIVERS SIDE DRAWER PANEL OR OTHER LOCATION

THIS HARNESS IS SIMPLY A 3M POSITIVE AND NEGATIVE WIRE EXTENSION WITH CONNECTING PLUGS AT EACH END. IT IS NOT ESSENTIAL AND THE SAME OUTCOME CAN BE ACHIEVED BY CUTTING THE 2 PIN PLUG OFF THE JBA HARNESS AND HARD WIRING A 2 CORE EXTENSION WIRE TO THE LOCATION DESIRED.

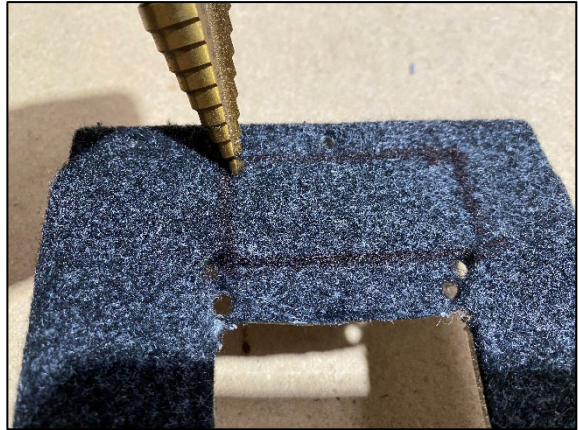


STEP 3.3.1 IF CONNECTING TO THE JBA FACTORY POWER HARNESS AND THE SWITCH IS LOCATED ON THE PASS SIDE DRAWER FRONT AS SHOWN, CONNECT THE 2 PIN PLUG.

3.2 JBA FACTORY STYLE DRAWER FRONT SWITCH



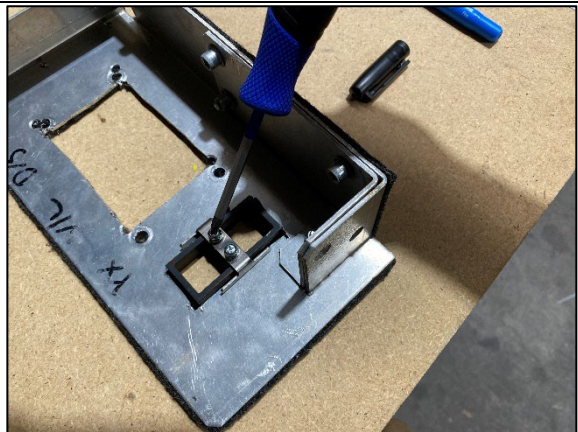
STEP 3.2.1 CHOOSE THE DESIRED LOCATION ON THE DRAWER FRONT AND MARK THE BASE.



STEP 3.2.2 DRILL A 4-6MM HOLE IN EACH CORNER.

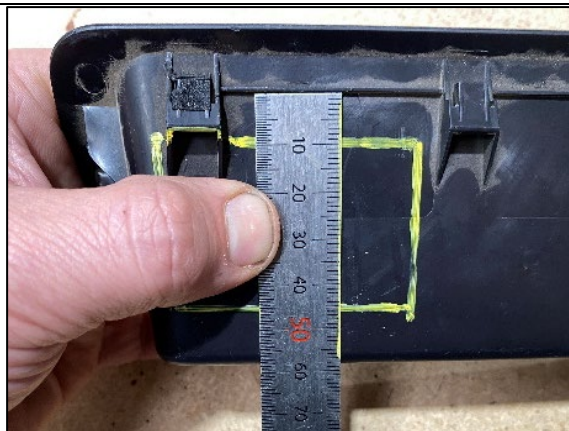


STEP 3.2.3 USE THE APPROPRIATE TOOL (SUGGEST JIGSAW FOR ALUMINUM AND ANGLE GRINDER FOR STEEL) TO CUT THE SECTION OUT AND FILE BACK EDGES AND CARPET.



STEP 3.2.4 SECURE THE SWITCH PANEL USING THE RETAINING PLATE AND 2 X M4 X 10 DOME HEAD SEMS AS SHOWN.

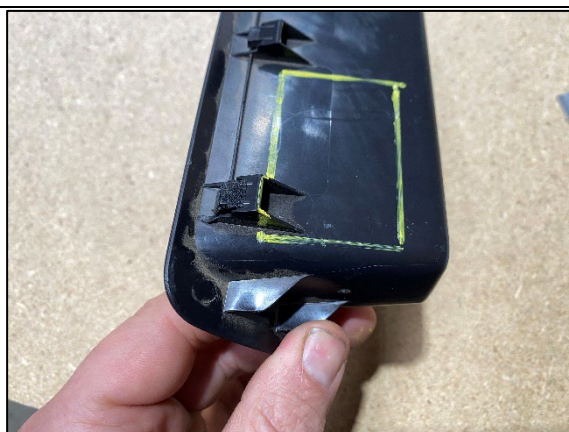
3.3 JBA FACTORY STYLE TAILGATE SWITCH



STEP 3.3.1 MARK OUT THE PASS SIDE GRAB HANDLE USING THE FOLLOWING REFERENCE POINTS. 10MM FOR THE TOP LINE AND 45MM FOR THE BOTTOM LINE.



STEP 3.3.2 FOR THE RIGHT SIDE LINE, MARK 5MM FROM THE TAB AS SHOWN.



STEP 3.3.3 FOR THE LEFT SIDE MARK ON THE CORNER 2-3MM FROM THE SIDE OF THE TAB AS SHOWN.



STEP 3.3.4 DRILL A 3-4MM HOLE IN EACH OF THE 4 CORNERS.



STEP 3.3.5 USE A RENOVATOR TOOL OR SUITABLE TOOL TO CUT OUT THE MARKED SECTION AS SHOWN.



STEP 3.3.6 REFERENCE PHOTO SHOWN ONCE CUT. USE A KNIFE OR FILE TO CLEAN ALL EDGES.



STEP 3.3.7 PLACE JBA-LB804SH SWITCH BLOCK PLATE INTO THE HANDLE.



STEP 3.3.8 USE 1-2 M4 X 10 DOME HEAD SCREWS FINGER TIGHT TO TEMPORARILY MOUNT THE SWITCH BLOCK IN PLACE.



STEP 3.3.9 ADJUST THE SWITCH BLOCK AND PLATE TO LINE UP GAPS EVENLY.



STEP 3.3.10 CAREFULLY PILOT DRILL THE 4 HOLES IN THE SWITCH BLOCK PLATE AS SHOWN.



STEP 3.3.11 REMOVE THE SWITCH PLATE AND BLOCK AND DRILL ALL PILOT HOLES OUT TO 5MM.



STEP 3.3.12 USE THE 4 X M4 X 12 CSK HEAD SCREWS AND FLANGE NUTS TO FULLY INSTALL THE SWITCH PLATE. USE THE 4 X M4 X 10 DOME SEMS TO ATTACH THE BLOCK TO THE PLATE IN THE CAPTIVE POINTS. ADJUST ALL GAPS AS NEEDED AND FULLY TIGHTEN ALL SCREWS ONCE HAPPY.

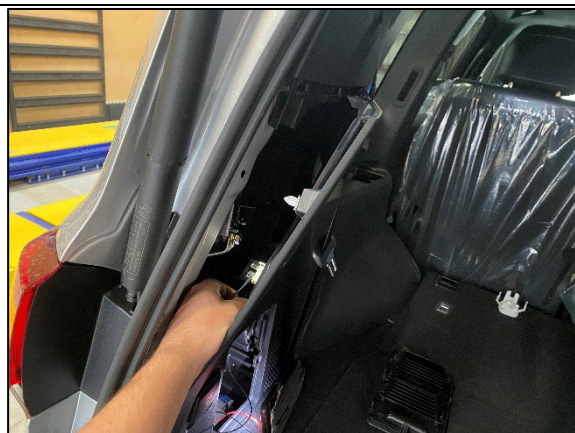
4. JBA FACTORY POWER HARNESS INSTALLATION

IMPORTANT NOTES

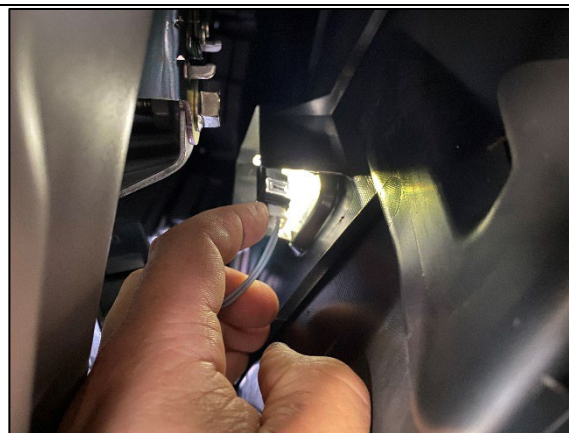
LOCATION AND ACCESS- THE JBA FACTORY POWER HARNESS IS LOCATED ON THE PASSENGER SIDE NEAR THE REAR JACK PANEL. THE INSTALLATION WILL BE EASIER IF THE REAR QUARTER PANEL IS FULLY REMOVED BUT THIS WILL TAKE A BIT LONGER TO DO. IF YOU PREFER TO NOT REMOVE THE QUARTER PANEL OR IF A DRAWER SYSTEM IS INSTALLED, IT IS STILL ABLE TO BE DONE BT WILL BE RESTRICTED WITH SPACE. IF A DRAWER SYSTEM IS FITTED, IT IS SUGGESTED TO REMOVE THE PASSENGER SIDE WING PANELS TO MAKE IT EASIER ALSO.

POWER AND OPERATION- THE JBA FACTORY POWER HARNESS PICKS UP ON THE VEHICLE INTERIOR LIGHT SYSTEM ALLOWING POWER TO BE SUPPLIED UPON OPENING THE REAR TAILGATE AND POWER TO BE TURNED OF WHEN THE TAILGATE IS SHUT. THE JBA SWITCH CHOSEN THEN ALLOWS THE LIGHT TO BE TURNED ON AND OFF INDEPENDENTLY IF DESIRED WHEN THE TAILGATE IS OPENED AND POWER IS SUPPLIED.

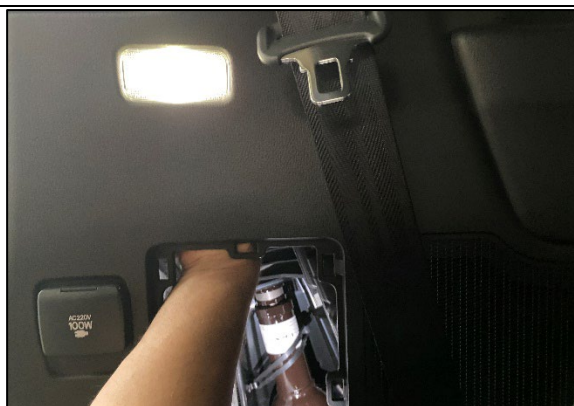
THE FACTORY POWER HARNESS USES THE VEHICLE START BATTERY FOR POWER. THE JBA LED ONLY DRAWS BETWEEN 1-1.5A PER HOUR SO SHOULD NOT IMPACT ON THE START BATTERY. IF THE INSTALL WOULD PREFER TO USE A SECOND BATTERY FOR ITS POWER SOURCE (IF FITTED), IT IS POSSIBLE TO TAP THE RED POWER WIRE INTO THE INSTALLED SECOND BATTERY. IF THIS INSTALL METHOD IS CHOSEN, RETAIN THE BLACK NEGATIVE WIRE IN ITS INSTALL LOCATION TO THE DOME LIGHT AS OUTLINED BELOW AND DON'T COMPLETE STEPS .6-.10 BELOW. CUT THE JBA CONNECTOR OFF AND HARD WIRE INTO THE SECOND BATTERY SYSTEM.



STEP 4.1 IF NOT PULLING THE WHOLE QUARTER PANEL OFF, THE REAR SECTION CAN BE PULLED BACK JUST ENOUGH TO ACCESS THE DOME LIGHT AS SHOWN.



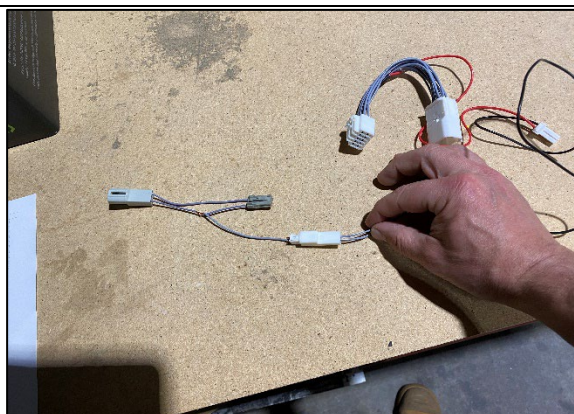
STEP 4.2 UNPLUG THE FACTORY CONNECTOR FROM THE REAR OF THE DOME LIGHT AS SHOWN.



STEP 4.3 IF THE REAR QUARTER PANEL CANT BE PULLED BACK AS SHOWN IN STEP 4.1, THE PLUG CAN ALSO BE ACCESSED BY FEEL FROM THE JACK PANEL AS SHOWN.



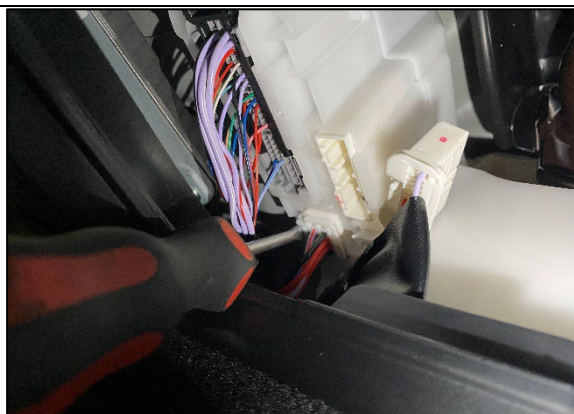
STEP 4.4 PLUG THE JBA WIRING HARNESS INTO THE FACTORY HARNESS AS SHOWN. AND PLUG THE OTHER END BACK INTO THE REAR OF THE DOME LIGHT.



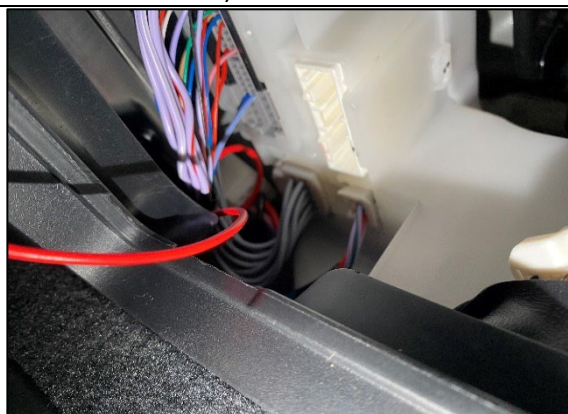
STEP 4.5 IF VEHICLE HAS AN LED INTERIOR DOME LIGHT, USE THE JBA PATCH HARNESS PROVIDED AND CONNECT INTO THE LOOM AS SHOWN.



STEP 4.6 REMOVE THE TOP PLUG SHOWN TO GAIN ACCESS TO THE PLUG BELOW. USING A FLAT BLADE SCREWDRIVER CAN HELP PUSH IN THE TAB. (DON'T COMPLETE THESE STEPS IF WIRING THE POSITIVE TO A SECOND BATTERY, SEE NOTES ABOVE)



STEP 4.7 REMOVE THE BOTTOM PLUG REPEATING THE SAME PROCESS WITH THE SCREWDRIVER TO PUSH IN THE TAB.



STEP 4.8 PLUG THE JBA HARNESS BACK INTO THE FACTORY POSITION AND PLUG THE OE LOOM INTO THE JBA HARNESS. (ENSURE THE TOP TOYOTA PLUG REMOVED IN STEP 4.6 IS RE-PLUGGED IN)

5. CONNECTION OF JOINING HARNESES

ALL CONNECTIONS BETWEEN THE VEHICLE AND TAILGATE HAVE CONNECTING HARNESES DESIGNED TO BE FITTED OFF OR CONNECTED ON THE PASSENGER JACK REAR JACK AREA. THE SUPPLIED HARNESES ARE ALL APPROX 3 METERS TO RUN TO THIS AREA. ANY CONNECTIONS FURTHER AWAY WILL REQUIRE EXTENSION OF THE SUPPLIED HARNESES.

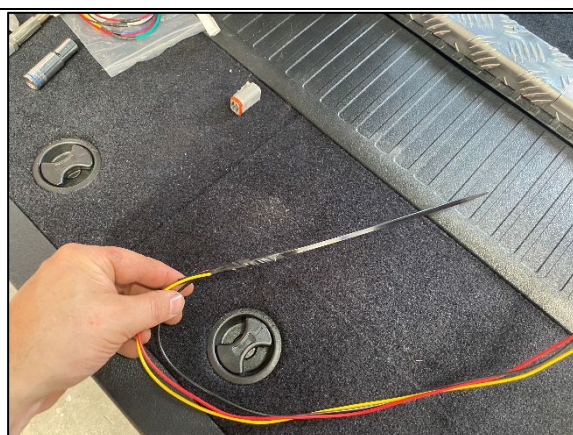
CONNECTIONS BETWEEN THE TAILGATE RUN THROUGH THE RUBBER BOOT, REFER TO THE BELOW GUIDE FOR GENERAL STEPS AND THE SPECIFIC HARNESS STEPS BELOW IN STEPS 5.1 AND 5.2.



STEP 5.1 PULL DOWN THE TOP SECTION OF THE RUBBER BOOT AS SHOWN.



STEP 5.2 IT IS EASIER TO ALSO REMOVE THE BOTTOM SECTION TO FEED THE WIRE THROUGH BUT THE BOTTOM SECTION CAN BE MORE DIFFICULT TO RE-INSTALL TO THE VEHICLE. THE BOTTOM SECTION HAS A WHITE PLASTIC RETAINER THAT IS EASIER IF YOU REMOVE THIS BY PUSHING THE SIDE TABS IN. IF THE BOOT COMES OFF THE WHITE CLIP, IT CAN BE DIFFICULT TO RE-INSTALL THE BOOT BACK ON.



STEP 5.3 IT IS ALSO EASIER TO TAPE THE WIRING HARNESS TO A CABLE TIE OR STEEL GUIDE AND SPRAY WITH A LUBRICANT SUCH AS SILICONE SPRAY (IF AVAILABLE)



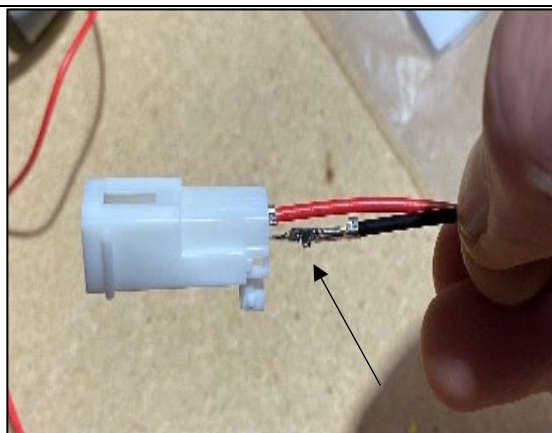
STEP 5.4 REMOVE THE RUBBER SEAL AROUND THE BOOT AREA AND PULL THE PANELS AND TRIMS BACK JUST ENOUGH TO RUN THE WIRING HARNESS THROUGH. ENSURE NOTHING IS PINCHED OR CAUGHT.

5.1 JBA FACTORY POWER HARNESS TO SWITCH LOCATION IN TAILGATE

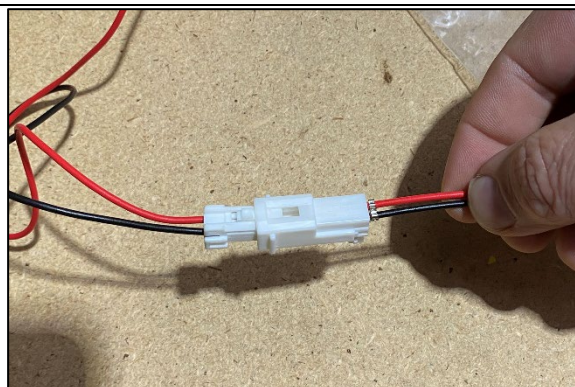
IMPORTANT- ENSURE THIS STEP IS COMPLETED BY RUNNING THE HARNESS FROM THE TAILGATE INTO THE VEHICLE. THIS WILL MEAN THE EXPOSED PINS (DE PLUGGED END) WILL RUN FROM THE TAILGATE, THROUGH THE BOOT THEN INTO THE VEHICLE.



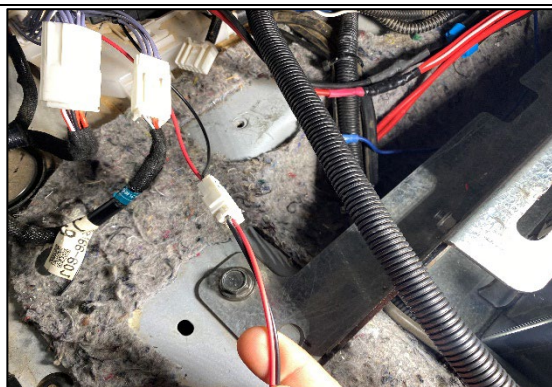
STEP 5.1.1 CONNECT JBA-LBWH5 TO THE SWITCH IN THE TAILGATE AND FEED THE DE-PLUGGED END THROUGH THE BOOT AS SHOWN.



STEP 5.1.2 NOTE THE ORIENTATION OF THE PLUG AND THE PINS. THE TABS ON THE PIN SHOULD FACE DOWN WITH THE PLUG IN THE SHOWN POSITION.



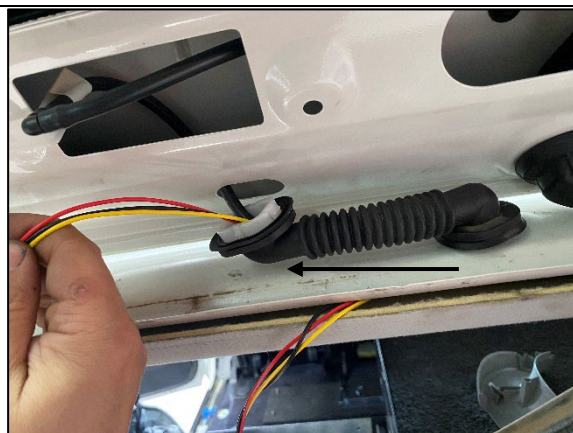
STEP 5.1.3 NOTE THE POSITION OF THE RED AND BLACK WIRES AND THE ORIENTATION OF THE PLUGS. TO DOUBLE CHECK IN THE RIGHT POSITION, HALF PLUG THE PLUGS TOGETHER (NOT ALL THE WAY IN) TO ENSURE EVERYTHING IS LINED UP CORRECTLY. ONCE CORRECT POSITIONS ARE CONFIRMED, DOUBLE CHECK WIRES HAVE CLICKED INTO PLACE CORRECTLY GIVING THEM A PULL. ONCE HAPPY, CLOSE THE RETAINER CLIP ON THE PLUG USING POINTY NOSED PLIERS IF REQUIRED TO CONFIRM A FULL SEAL.



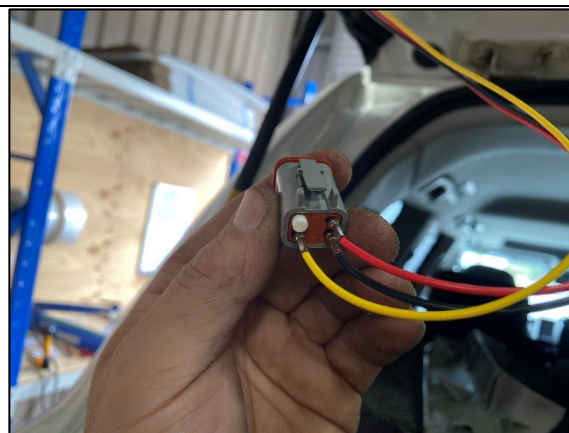
STEP 5.1.4 CONNECT TO THE JBA FACTORY POWER HARNESS AS SHOWN.

5.2 JBA SWITCH LOCATIONS IN THE VEHICLE

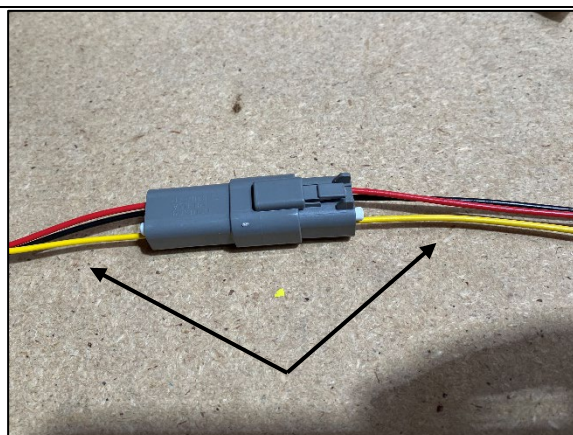
IMPORTANT- ENSURE THIS STEP IS COMPLETED BY RUNNING THE HARNESS FROM THE VEHICLE INTO THE TAILGATE. THIS WILL MEAN THE EXPOSED PINS (DE PLUGGED END) WILL RUN FROM THE VEHICLE, THROUGH THE BOOT THEN INTO THE TAILGATE.



STEP 5.2.1 CONNECT THE JBA-LBWH8 TO THE SWITCH IN THE VEHICLE AND RUN UNPLUGGED END UP TO THE BOOT AND INTO THE TAILGATE.



STEP 5.2.2 PUSH THE PINS INTO THE DT PLUG IN THE POSITIONS SHOWN NOTING THE ORIENTATION OF THE PLUG. ENSURE ALL PINS CLICK INTO POSITION AND GIVE THE WIRES A PULL TO ENSURE THEY HAVE LOCATED CORRECTLY.



STEP 5.2.3 DOUBLE CHECK THE WIRE COLOURS LINE UP RED-RED, BLACK-BLACK, YELLOW-YELLOW AND CHANGE IF REQUIRED.



STEP 5.2.4 FINALLY INSERT THE GREEN RETAINING WEDGE AND ENSURE IT SEATS CORRECTLY AND CLICKS INTO PLACE.

6. OPTIONAL 30 DEGREE UPGRADE INSTALLATION



STEP 6.1 POSITION THE 30 DEGREE WEDGE TOP TO BOTTOM 10MM FROM THE TOP EDGE IN THE ORIENTATION SHOWN. POSITION CENTRALLY LEFT TO RIGHT.



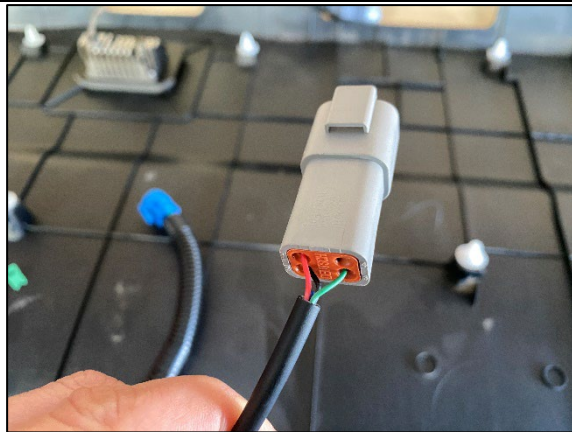
STEP 6.2 USE A PILOT DRILL TO MARK LEFT AND RIGHT SCREW HOLES AND DRILL THROUGH TOP LEFT OF THE WIRE SLOT AS SHOWN.



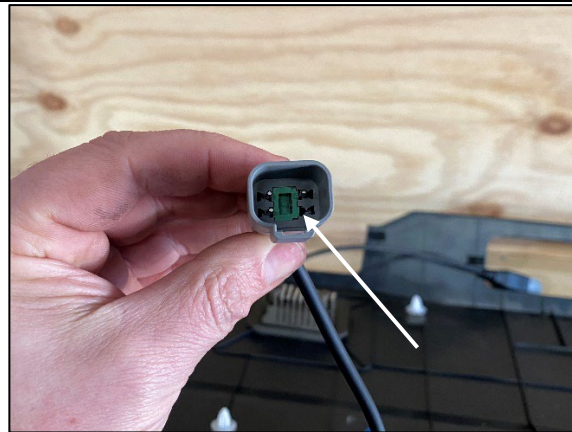
STEP 6.3 REMOVE THE WEDGE AND DRILL ALL PILOT HOLES OUT TO 6MM.



STEP 6.4 FEED THE WIRING THROUGH THE WEDGE THEN THROUGH THE HOLES DRILLED AS SHOWN. FASTEN THE LED AND WEDGE USING M5 X 35 SCREWS AND NYLOC.



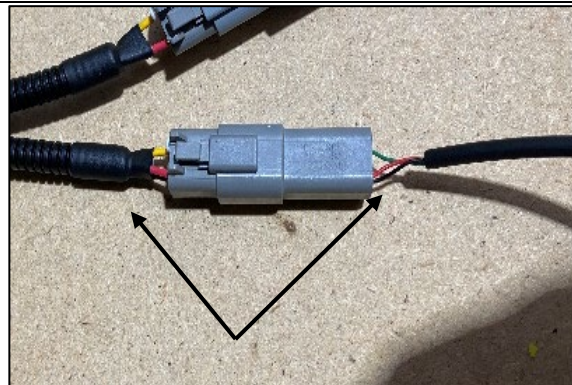
STEP 6.5 PUSH THE WIRES THROUGH IN THE ORIENTATION AND LOCATIONS SHOWN. PUSH FROM THE BACK USING A SHARP TOOL LIKE A SCRIBE OR PULL THE PINS THROUGH WITH POINTY NOSE PLIERS TO ENSURE THE PINS ARE SEATED AND CLICK INTO PLACE. PULL FROM THE REAR TO ENSURE ALL PINS ARE LOCKED INTO PLACE.



STEP 6.6 INSERT THE GREEN RETAINING WEDGE FROM THE OPEN SIDE AND ENSURE ALL CONNECTIONS CLICK INTO PLACE FIRMLY.



STEP 6.7 USE JBA-LBWH4 3 WAY CONNECTOR TO CONNECT THE 2 LIGHTS AS SHOWN.



STEP 6.8 DOUBLE CHECK THE WIRE COLOURS LINE UP RED-RED, BLACK-BLACK, GREEN-YELLOW AND CHANGE IF REQUIRED.

7. FINAL STEPS



STEP 7.1 CABLE TIE ALL WIRING HARNESSES NEATLY AND TRIM. PRE-TEST ALL LIGHTS AND SWITCH FUNCTIONALITY.



STEP 7.2 RE-INSTALL REAR TAILGATE PANELS AND PLUG IN ANY CONNECTIONS STILL REMAINING.



STEP 7.3 RE-TEST LED AND WIPE DOWN ALL PANELS.