

PRODUCT- TJM TWIN COMPRESSOR MOUNTING BRACKET

VEHICLE- TOYOTA 250 SERIES PRADO 11/24+

PART NUMBER- JBA-CB222BR, KIT2, KIT3, KIT4, KIT5

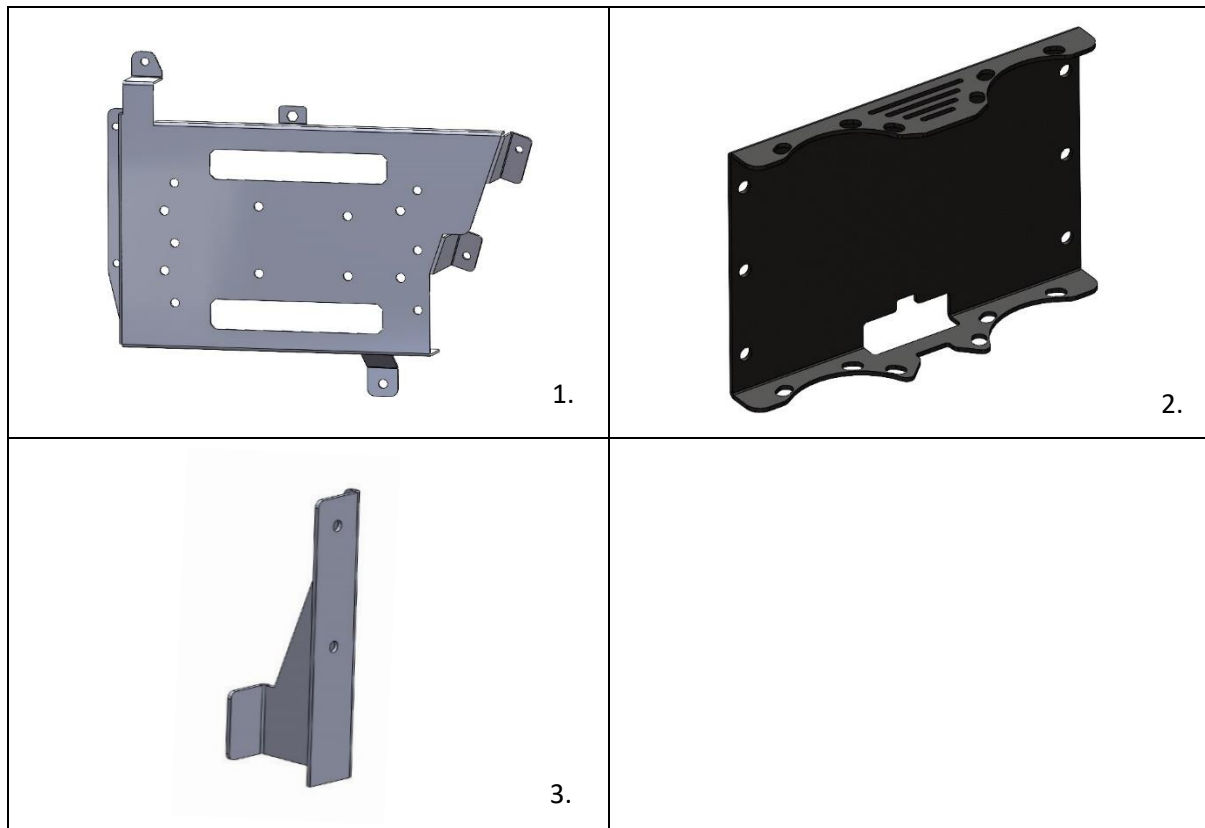
ESTIMATED FIT TIME

- | | |
|--|-------------|
| - REMOVAL AND REFITMENT OF SEAT AND INTERIOR PANELS | 60-75 MINS |
| - REMOVAL OF DRAWER SYSTEM (IF REQUIRED) | 60-120 MINS |
| - PREPARATION AND MOUNTING OF COMPRESSOR AND BRACKET* | 90-120 MINS |
| *DEPENDING ON KIT | |
| - PREPARATION AND MOUNTING OF TANK AND BRACKET (IF REQUIRED) | 60 MINS |
| - ELECTRICAL WIRING AND PLUMBING OF AIR OUTLETS | 90-120MINS |

IMPORTANT NOTES

- READ INSTRUCTIONS CAREFULLY PRIOR TO FITMENT
- ENSURE 567 THREAD SEALANT IS APPLIED TO ALL AIR THREADS INSTALLED
- ENSURE THAT ALL TRIM CLIPS ARE REMOVED FROM THE VEHICLE WHEN REMOVING PANELS AND RE-INSERTED BACK INTO THE PANELS BEFORE RE-INSTALLATION (SEE STEPS 1.3.1-1.3.3).
- REFER TO TJM COMPRESSOR INSTALLATION INSTRUCTIONS FOR WIRING SPECIFICATIONS
- NITTO FITTING USED 013COMPPF01 SUPPLIED SEPARATELY (NOT BY JBA) AVAILABLE THROUGH TJM STORES

KIT CONTENTS

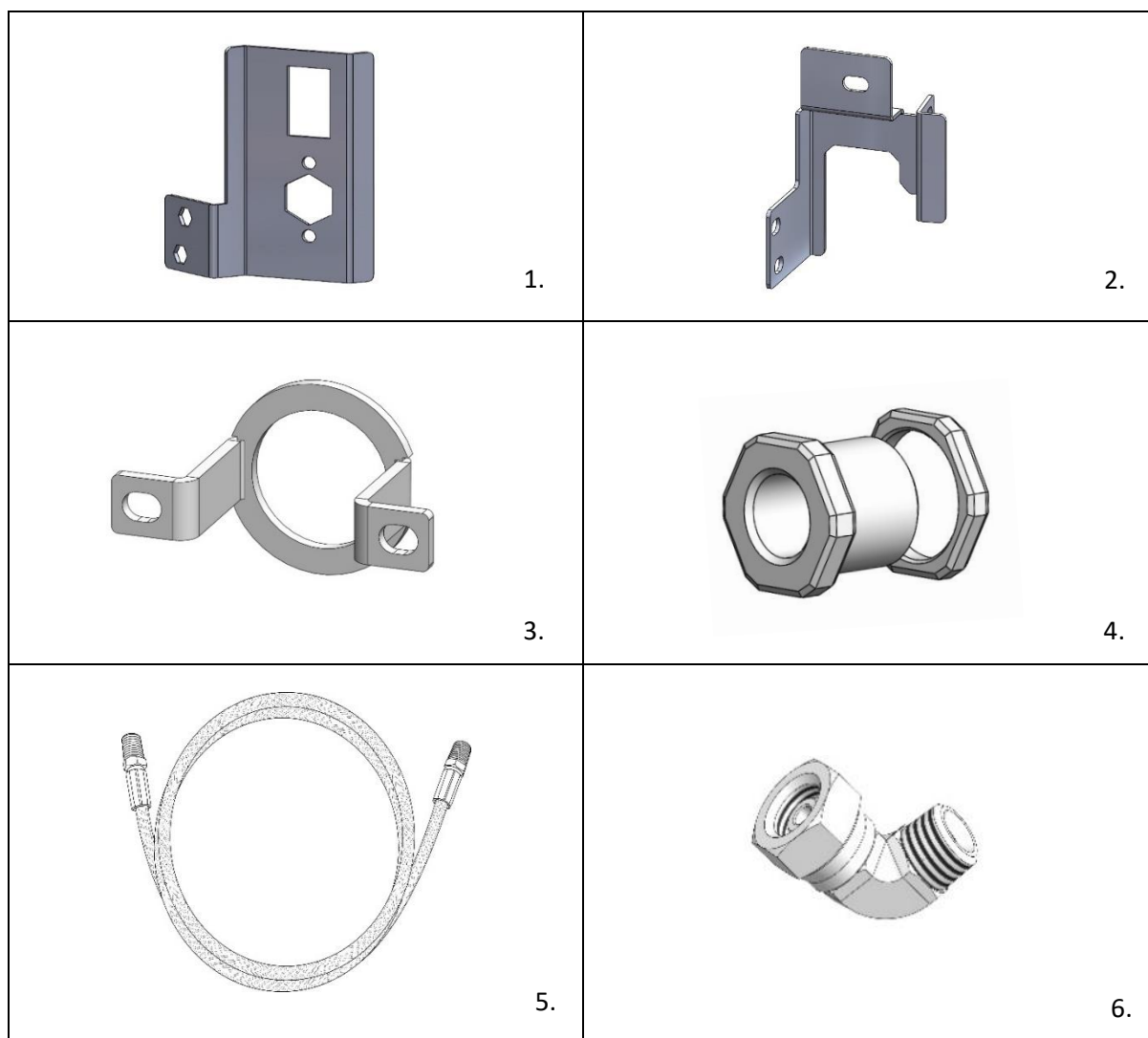


ITEM	DESCRIPTION	PART NO.	QTY
1	JBA 250 PRADO TJM TWIN/SINGLE COMPRESSOR BKT	10-CB222BR-A	1
2	JBA TJM TWIN COMPRESSOR FLAT MOUNTING PLATE	10-CB951DB	1
3	JBA 250 PRADO DRAIN HOSE RELOCATION BKT	10-CB222BR-E	1
4	M6 X 16MM HEX FLANGED SERRATED SET SCR GR 8.8 ZP	B12 060168.8FSZP	12
5	M6 HEX SERR FLANGE NUT Z/Y	N24 06ZY	1
6	M6 FLANGED HD KNURLED RIV NUT G/R 4.20-6.60 ZP	R22 06FLLKN-AVK	3
7	M4 FLANGED NYLON INSERT LOCK NUT GR 304S/S	X53 04FL304	2
8	M4 X 12MM CSK HD PHIL M/T GR 304 S/S	X37 0412CP304	2

OPTIONAL KIT PARTS

JBA-CB222-DKIT2

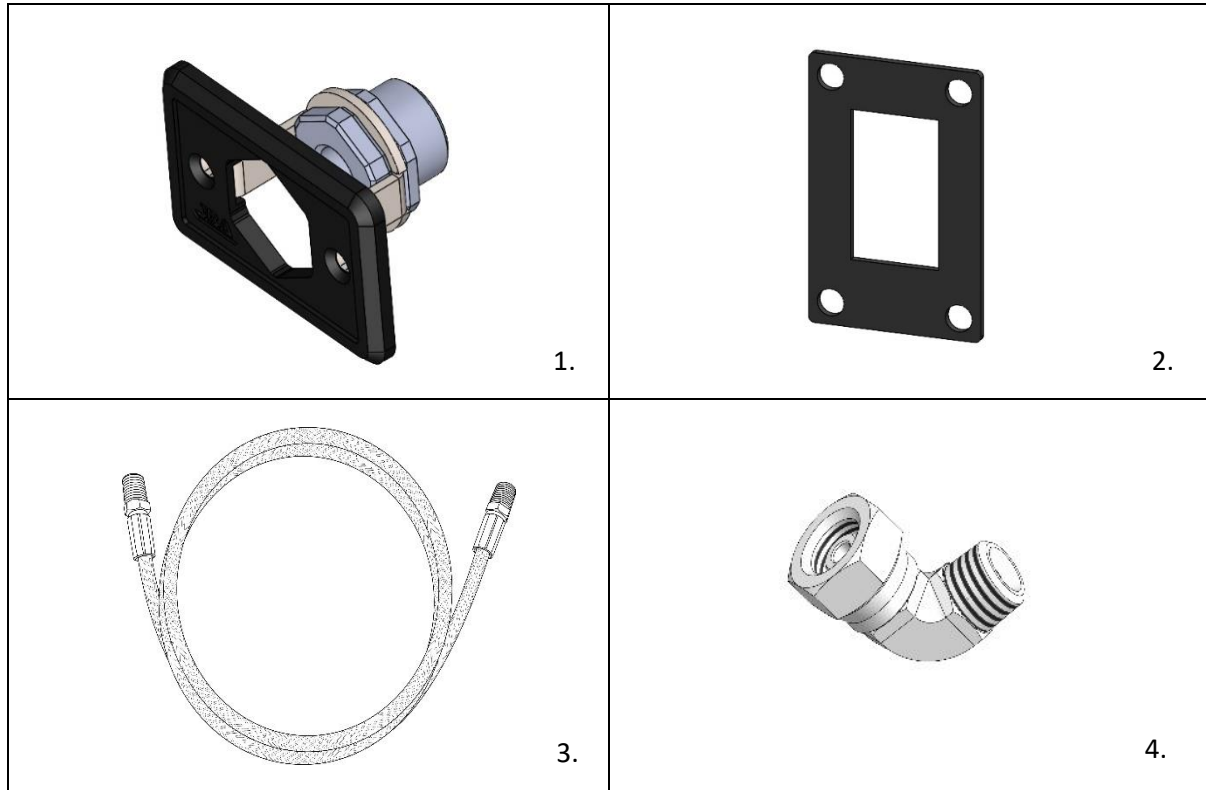
JBA KIT- 250 PRADO BRACKET WITH QUARTER PANEL AIR OUTLET AND SWITCH MOUNT



ITEM	DESCRIPTION	PART NO.	QTY
1	JBA 250 PRADO TJM AIR/SWITCH BRACKET	10-CB222BR-QAS	1
2	JBA 250 PRADO RELAY RELOCATION BRACKET	10-CB222BR-D	1
3	JBA BULK HEAD RECESSED HOUSING BRACKET	10-CB101B	1
4	JBA COMPRESSOR BULK HEAD AND NUT	JBA-CB103	1
5	JBA STAINLESS HOSE 400MM	JBA-CB111	1
6	JBA STAINLESS ELBOW 90 DEGREE	JBA-CB106	2
7	M6 X 16MM HEX FLANGED SERRATED SET SCR GR 8.8 ZP	B12 060168.8FSZP	5
8	M6 HEX SERR FLANGE NUT ZP	N24 06ZP	2
9	M4 FLANGED NYLON INSERT LOCK NUT GR 304S/S	X53 04FL304	2
10	M4 X 12MM CSK HD PHIL M/T GR 304 S/S	X37 0412CP304	2

JBA-CB222-DKIT3

JBA KIT- 250 BRACKET WITH DRAWER FRONT AIR OUTLET AND SWITCH

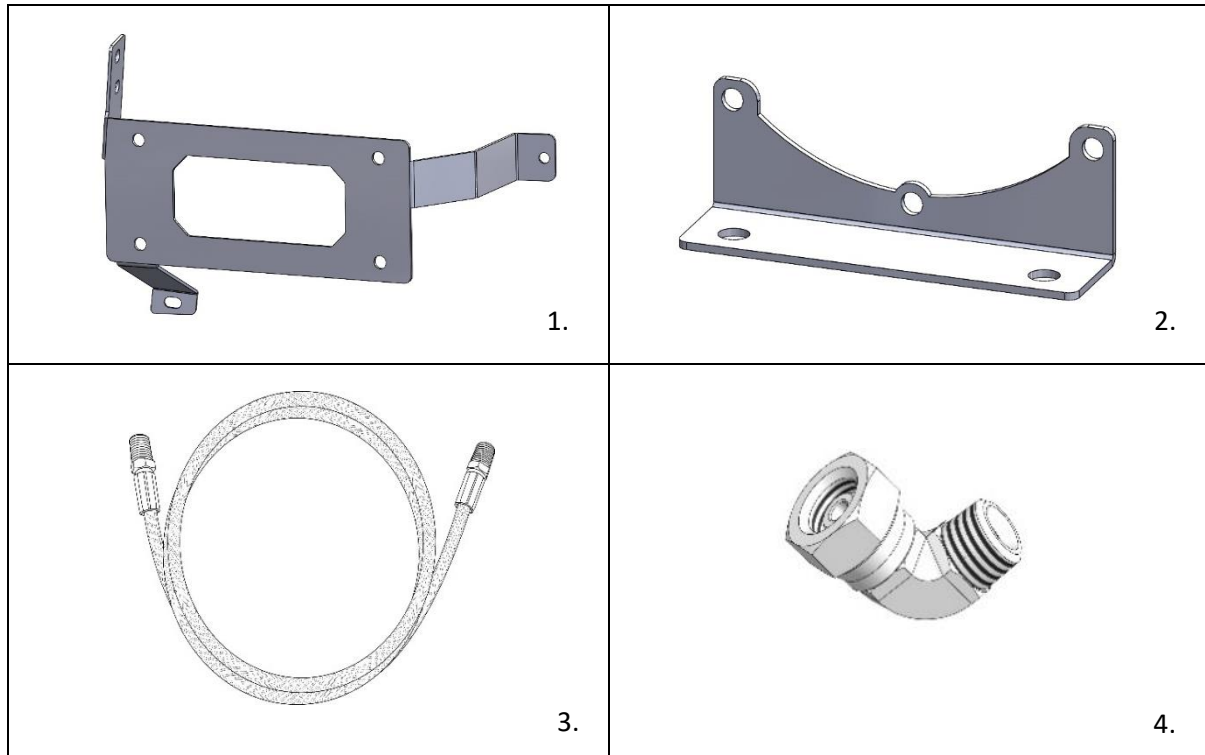


ITEM	DESCRIPTION	PART NO.	QTY
1	JBA BULK HEAD RECESSED FIT PANEL	JBA-CB101	1
2	JBA SWITCH MOUNTING PLATE	JBA-CB901	1
3	JBA STAINLESS HOSE 600MM	JBA-CB116	1
4	JBA STAINLESS ELBOW 90 DEGREE	JBA-CB106	2

JBA-CB222-DKIT4

JBA KIT- 250 PRADO BRACKET WITH QUARTER PANEL AIR OUTLET/SWITCH MOUNT AND TANK

SAME PARTS AS KIT 2 PLUS

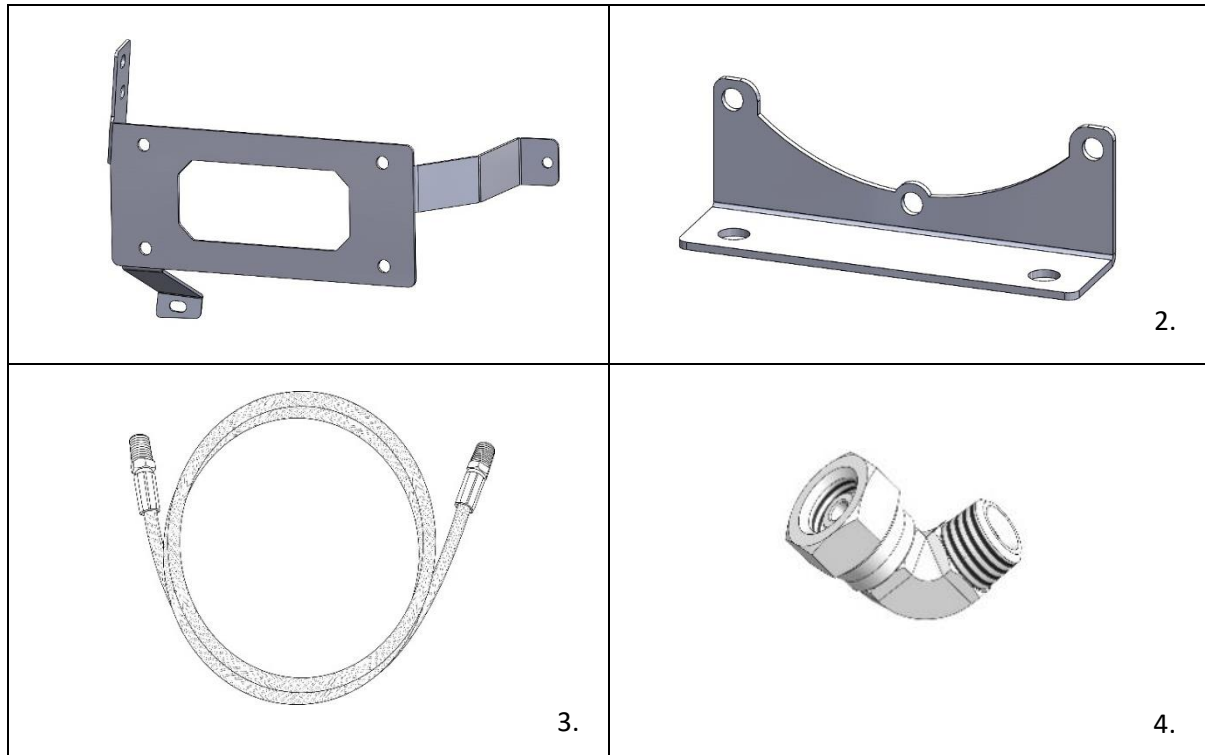


ITEM	DESCRIPTION	PART NO.	QTY
1	JBA 250 PRADO 2.5L TANK BRACKET	10-CB322-A	1
2	JBA SLIM LINE TANK END BRACKET	10-CBTE-A	2
3	JBA STAINLESS HOSE 400MM	JBA-CB111	1
4	JBA STAINLESS ELBOW 90 DEGREE	JBA-CB106	2
5	M6 X 16MM HEX FLANGED SERRATED SET SCR GR 8.8 ZP	B12 060168.8FSZP	4
6	M6 X 20MM BUTTON HEAD SOCKET SCR 304 S/S	X72 06020304	6
7	M6 ID SPRING WASHER GR 304 S/S	X82 06304	6

JBA-CB222-DKIT5

JBA KIT- 250 BRACKET WITH DRAWER FRONT AIR OUTLET AND SWITCH AND TANK

SAME PARTS AS KIT 3 PLUS



ITEM	DESCRIPTION	PART NO.	QTY
1	JBA 250 PRADO 2.5L TANK BRACKET	10-CB322-A	1
2	JBA SLIM LINE TANK END BRACKET	10-CBTE-A	2
3	JBA STAINLESS HOSE 1200MM	JBA-CB113	1
4	JBA STAINLESS ELBOW 90 DEGREE	JBA-CB106	2
5	M6 X 16MM HEX FLANGED SERRATED SET SCR GR 8.8 ZP	B12 060168.8FSZP	4
6	M6 X 20MM BUTTON HEAD SOCKET SCR 304 S/S	X72 06020304	6
7	M6 ID SPRING WASHER GR 304 S/S	X82 06304	6
8	M6 HEX SERR FLANGE NUT Z/Y	N24 06ZY	1

1. PREPARING THE VEHICLE

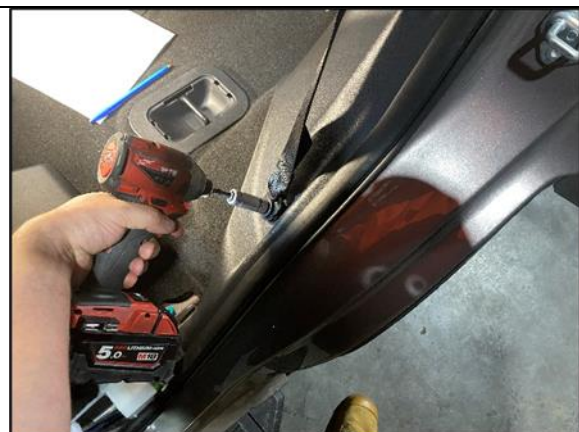
1.1 7 SEAT VARIANTS (REFER TO 1.2 BELOW FOR 5 SEAT VARIANTS)



STEP 1.1.1 START AT THE REAR PASSENGER SIDE DOOR AND FOLD THE PASSENGER SECOND ROW OF SEATS FORWARD AS SHOWN.



STEP 1.1.2 REMOVE DOOR WELL PLASTIC TRIM COVER AND SET ASIDE. CHECK FOR ANY TRIM CLIPS LEFT IN THE VEHICLE.



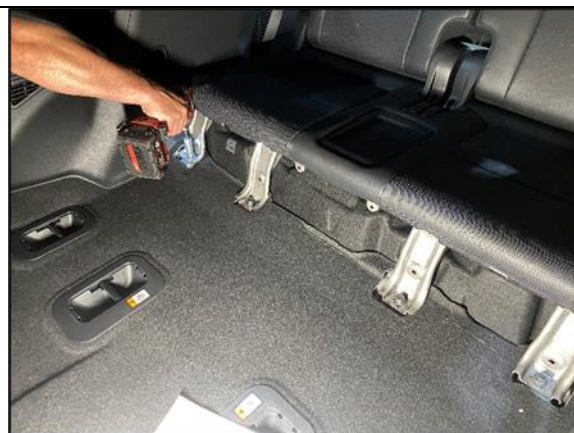
STEP 1.1.3 REMOVE 14MM SEAT BELT BOLT. CAREFULLY LOOP THE BELT OVER GRAB HANDLE TO KEEP OUT OF THE WAY IF DESIRED.



STEP 1.1.4 REMOVE THE CENTRE SECTION COVER OF THE REAR SEAT. CHECK FOR ANY TRIM CLIPS.



STEP 1.1.5 REMOVE THE OUTER SECTIONS NEXT (IT IS NOT REQUIRED TO REMOVE THE INNER SECTION OF THE DRIVERS SIDE PANEL).



STEP 1.1.6 REMOVE THE 4 X 14MM BOLTS EXPOSED AND SET ASIDE.



STEP 1.1.7 MOVE TO THE REAR OF THE VEHICLE AND REMOVE THE REAR STORAGE BOX.



STEP 1.1.8 REMOVE THE LEFT AND RIGHT TRIM PANELS.



STEP 1.1.9 REMOVE THE LEFT AND RIGHT PLASTIC STORAGE SECTIONS. THE DRIVERS SIDE LIFTS UP WITH TRIM CLIPS, THE PASS HAS TABS (FOLLOW INSTRUCTIONS ON PANEL)



STEP 1.1.10 REMOVE THE REAR PLASTIC TRIM. CHECK FOR ANY TRIM CLIPS LEFT IN THE VEHICLE.



STEP 1.1.11 REMOVE THE PLASTIC TRIM COVER AS SHOWN. CHECK FOR TRIM CLIPS.



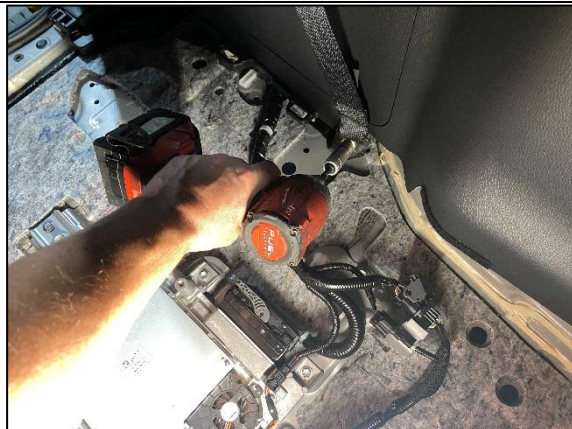
STEP 1.1.12 REMOVE 4 X 14MM BOLTS EXPOSED AS SHOWN AND SET ASIDE.



STEP 1.1.13 REMOVE THE 2 BODY CLIPS FOR THE SEAT WIRING LOOM AND UNCLIP AS SHOWN.



STEP 1.1.14 FOLD THE SEAT DOWN AND LEFT OUT OF VEHICLE (2 PEOPLE IS BEST TO ENSURE TRIM ISN'T SCRATCHED WHEN LIFTING OUT)



STEP 1.1.15 REMOVE 14MM SEAT BELT BOLT IN REAR OF BOOT AS SHOWN. AGAIN, IF DESIRED CAN CAREFULLY LOOP THE SEAT BELT UP ONTO GRAB HANDLE TO KEEP OUT OF THE WAY.



STEP 1.1.16 CAREFULLY POP OPEN PLASTIC COVER USING SMALL FLAT SCREWDRIVER AND REMOVE 10MM BOLT EXPOSED.



STEP 1.1.17 REMOVE PLASTIC COVER BY HAND TURNING 90 DEGREES AND PULLING OUT. REMOVE 10MM BOLT EXPOSED.



STEP 1.1.18 FLIP UP PLASTIC COVER USING SMALL FLAT SCREWDRIVER AND REMOVE 10MM BOLT EXPOSED. PULL OUT TIE DOWN.



STEP 1.1.19 BEGIN GENTLY PULL BACK QUARTER PANEL POPPING THE TRIM CLIPS. WORK YOUR WAY ALONG THE TOP UNDER THE WINDOW.



STEP 1.1.20 UNCLIP INTERIOR LIGHT PRESSING DOWN THE TAB AND GENTLY PULLING.



STEP 1.1.20 MOVE BACK TO SECOND ROW SEAT POSITION AND BEGIN PULLING BACK THE QUARTER PANEL.

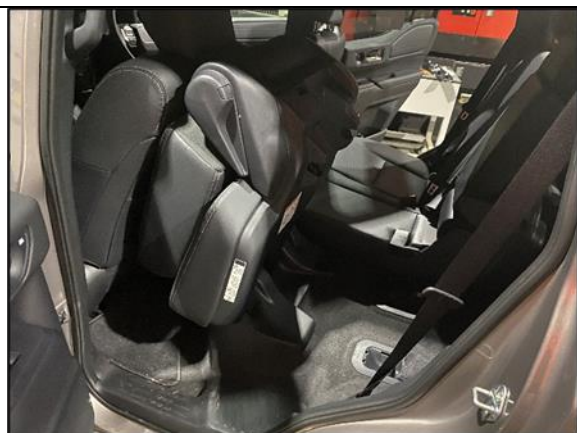


STEP 1.1.21 REMOVE THE USB POWER WIRING LOOM AS SHOWN.



STEP 1.1.22 REMOVE THE QUARTER PANEL COMPLETELY FROM VEHICLE AND SIT ON A SOFT CLEAN SURFACE.

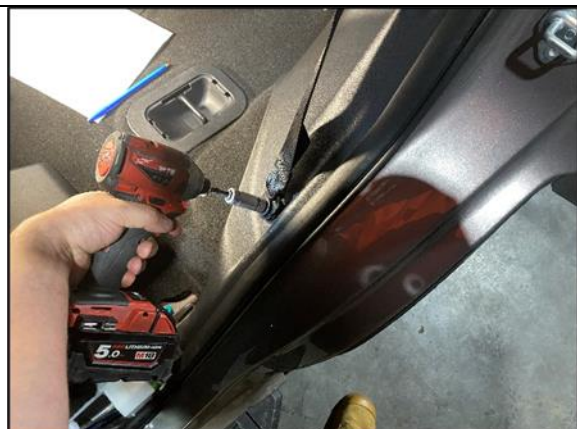
1.2 5 SEAT VARIANTS (REFER TO 1.1 ABOVE FOR 7 SEAT VARIANTS)



STEP 1.2.1 START AT THE REAR PASSENGER SIDE DOOR AND FOLD THE PASSENGER SECOND ROW OF SEATS FORWARD AS SHOWN.



STEP 1.2.2 REMOVE DOOR WELL PLASTIC TRIM COVER AND SET ASIDE. CHECK FOR ANY TRIM CLIPS LEFT IN THE VEHICLE.



STEP 1.2.3 REMOVE 14MM SEAT BELT BOLT. CAREFULLY LOOP THE BELT OVER GRAB HANDLE TO KEEP OUT OF THE WAY IF DESIRED.



STEP 1.2.4 MOVE TO THE REAR OF THE VEHICLE AND PUL OUT THE LEFT, RIGHT AND CENTRE TRIM SECTIONS AS SHOWN.



STEP 1.2.5 REMOVE PLASTIC TRIMS EXPOSED. PASS SIDE HAS 2 X TABS (FOLLOW INSTRUCTIONS ON PANEL) DRIVERS SIDE POPS UP USING TRIM CLIPS.



STEP 1.2.6 REMOVE BOTTOM TRIM SECTIONS AS SHOWN. CHECK FOR ANY TRIM CLIPS.



STEP 1.2.7 REMOVE THE REAR PLASTIC TRIM COVER. THESE CAN BE TIGHT, BE CAREFUL NOT TO DAMAGE WHEN REMOVING. CHECK FOR ANY TRIM CLIPS.



STEP 1.2.8 REMOVE THE STORAGE COMPARTMENT PULLING UP TO POP THE TRIM CLIPS.



STEP 1.2.9 LIFT THE PLASTIC COVER ON THE TIE DOWN USING A SMALL FLAT SCREWDRIVER TO EXPOSE THE BOLT AND REMOVE USING 10MM.



STEP 1.2.10 REMOVE THE COVER PANEL AND SET ASIDE ON A SOFT CLEAN SURFACE.



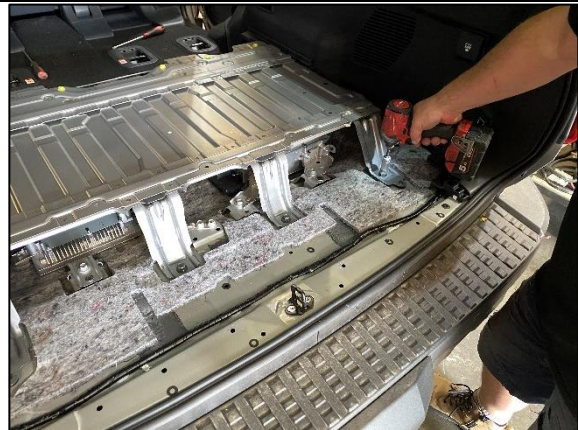
STEP 1.2.11 REMOVE THE PLASTIC TRIM COVER AS SHOWN. CHECK FOR TRIM CLIPS.



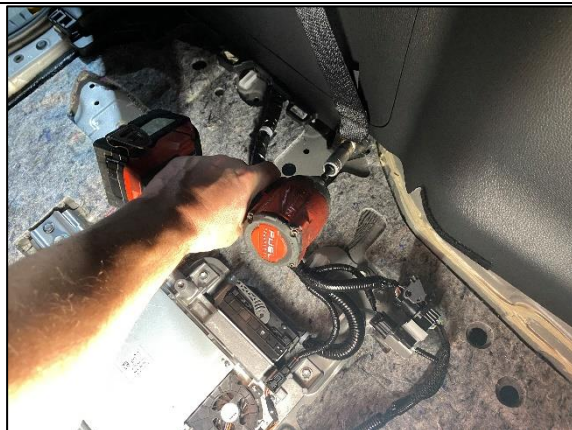
STEP 1.2.12 MOVE THE SECOND ROW OF SEAT SECTION AND POP OPEN THE COVERS ON THE TRIM SECTION AS SHOWN. HAND UNSCREW THE PLASTIC NUTS EITHER SIDE AS SHOWN.



STEP 1.2.13 REMOVE THE LAST SECTION OF THE PLASTIC COVER. CHECK FOR ANY TRIM CLIPS.



STEP 1.2.14 UNDO 14MM BOLTS ON THE STEEL COVER PLATE AND REMOVE FROM THE VEHICLE CAREFULLY ENSURING NOT TO SCRATCH THE VEHICLE.



STEP 1.2.15 REMOVE 14MM SEAT BELT BOLT IN REAR OF BOOT AS SHOWN. AGAIN, IF DESIRED CAN CAREFULLY LOOP THE SEAT BELT UP ONTO GRAB HANDLE TO KEEP OUT OF THE WAY.



STEP 1.2.16 CAREFULLY POP OPEN PLASTIC COVER USING SMALL FLAT SCREWDRIVER AND REMOVE 10MM BOLT EXPOSED.



STEP 1.2.17 REMOVE PLASTIC COVER BY HAND TURNING 90 DEGREES AND PULLING OUT. REMOVE 10MM BOLT EXPOSED.



STEP 1.2.18 FLIP UP PLASTIC COVER USING SMALL FLAT SCREWDRIVER AND REMOVE 10MM BOLT EXPOSED. PULL OUT TIE DOWN.



STEP 1.2.19 BEGIN GENTLY PULL BACK QUARTER PANEL POPPING THE TRIM CLIPS. WORK YOUR WAY ALONG THE TOP UNDER THE WINDOW.



STEP 1.2.20 UNCLIP INTERIOR LIGHT PRESSING DOWN THE TAB AND GENTLY PULLING.



STEP 1.2.20 MOVE BACK TO SECOND ROW SEAT POSITION AND BEGIN PULLING BACK THE QUARTER PANEL.



STEP 1.2.21 REMOVE THE USB POWER WIRING LOOM AS SHOWN.



STEP 1.2.22 REMOVE THE QUARTER PANEL COMPLETELY FROM VEHICLE AND SIT ON A SOFT CLEAN SURFACE.

1.3 REFERENCE PICS FOR TRIM CLIPS



STEP 1.3.1 REFERENCE PICS FOR TRIM CLIP (EXAMPLE ONLY). AS YOU ARE REMOVING PANELS, KEEP NOTICE OF ANY CLIPS THAT HAVE REMAINED IN THE VEHICLE- NORMALLY WHITE OR GREEN AS SHOWN.



STEP 1.3.2 USE A TRIM CLIP REMOVER TO POP OUT OF THE VEHICLE AS SHOWN.

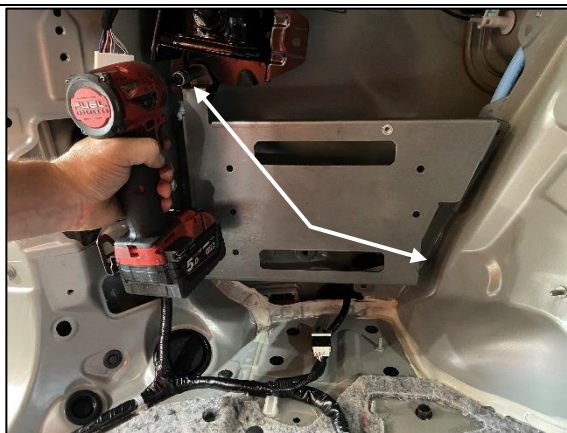


STEP 1.3.3 RE-INSERT INTO THE PLASTIC TRIM PANEL LOCATION. THEY WILL NORMALLY SLIDE IN AND POP INTO POSITION. THESE STEPS WILL ENSURE AN EASIER RE-INSTALLATION OF THE PANELS LATER.

1.4 PREPERATION OF VEHICLE FOR COMPRESSOR



STEP 1.4.1 REMOVE THE BOTTOM LEFT 10MM BOLT FROM THE JACK AS SHOWN.



STEP 1.4.2 LIFT THE COMPRESSOR BRACKET INTO PLACE (DON'T BOLT THE COMPRESSOR ON YET). FASTEN IN THE TOP LEFT AND BOTTOM RIGHT CAPTIVE NUT LOCATIONS.



STEP 1.4.3 MARK 4 X FIXING LOCATIONS (2 X EITHER SIDE THAT DON'T LINE UP WITH CAPTIVE LOCATIONS) AS SHOWN.



STEP 1.4.4 REMOVE BOTTOM LEFT CAPTIVE BOLT AS SHOWN TO MAKE ACCESS FOR DRILLING HOLE AND NUTSERTING EASIER. DON'T FORGET TO RE-INSTALL AFTER DRILLING.



STEP 1.4.5 DRILL OUT THE MARKED HOLES TO 10MM. VACUUM ALL SWARF, DEBUR HOLES AND TREAT WITH ANTI-CORRSION PAINT.



STEP 1.4.6 INSERT M6 CAPTIVE NUTS AS SHOWN INTO PREVIOUSLY DRILLED HOLES.



STEP 1.4.7 UNCLIP THE ROOF DRAIN HOSE BRACKET AS SHOWN.



STEP 1.4.8 INSTALL 10-CB222BR-E HOSE RELOCATION BRACKET USING M4 X 12 CSK SCREWS AND NYLOC NUTS.



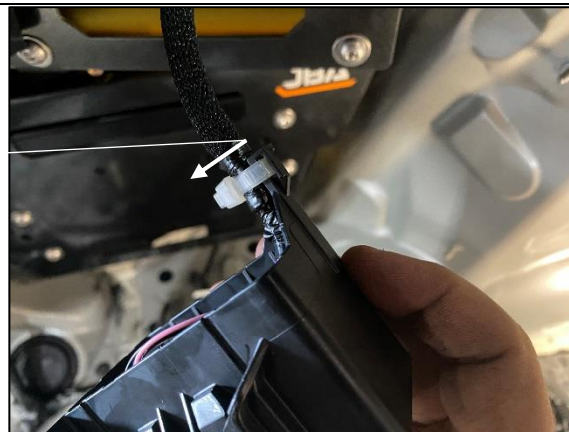
STEP 1.4.9 RE-CLIP THE ROOF DRAIN HOSE TO THE JBA RELOCATION BRACKET AS SHOWN.

1.5 PREPARATION OF THE VEHICLE FOR RELAY RELOCATION BRACKET

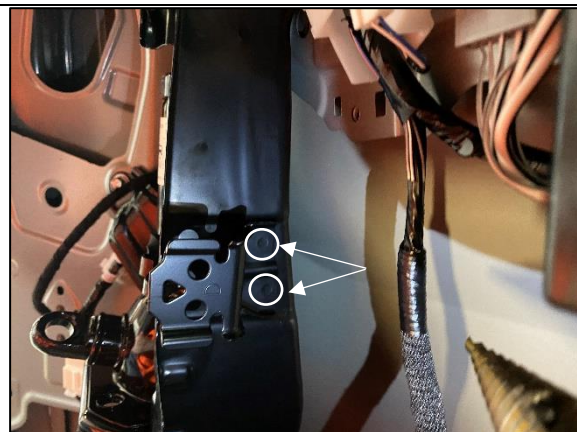
*** ONLY COMPLETE THIS STEP IF FITTING JBA-CB222 KIT2, KIT 4 AND KIT 5. IF NOT FITTING A QUARTER PANEL AIR/SWITCH MOUNT OR TANK, THIS STEP IS NOT REQUIRED.**



STEP 1.5.1 UNCLIP THE RELAY BLOCK FROM THE TOYOTA MOUNTING BRACKET AS SHOWN. REMOVE THE JACK.



STEP 1.5.2 ROTATE THE CABLE TIE TO FACE DOWN AS SHOWN.



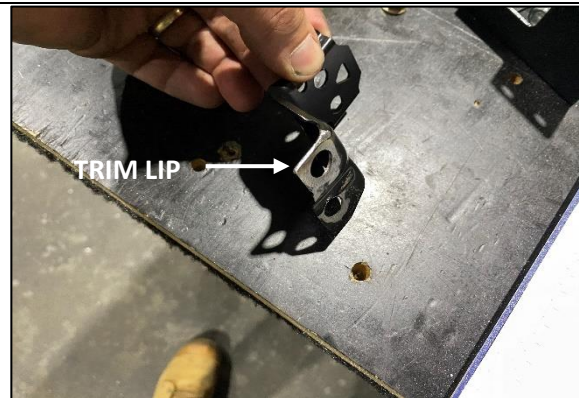
STEP 1.5.3 THE TOYOTA MOUNTING BRACKET NEEDS TO BE REMOVED BY DRILLING OUT THE 2 X SPOT WELDS ATTACHING IT TO THE JACK BRACKET AS MARKED. TAKE YOUR TIME AND CAREFULLY MARK THE CENTRE OF THE WELDS FOR DRILLING. THE ACCURACY OF THIS STEP WILL BE CRITICAL FOR LATER STEPS.



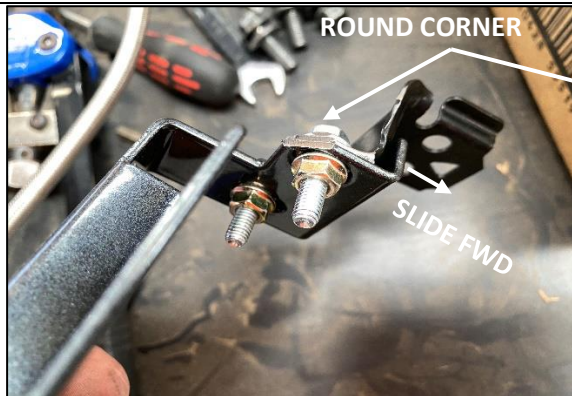
STEP 1.5.4 DEPENDING ON YOUR CHOICE YOU CAN DRILL FROM THE REAR OF THE BRACKET OR FRONT AS SHOWN IN STEP 1.5.5.



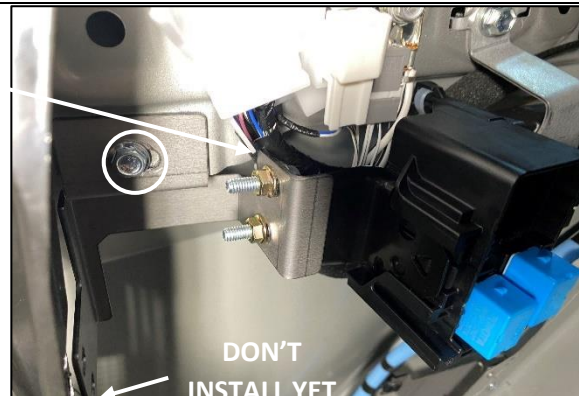
STEP 1.5.5 IF YOU HAVE AN ANGLE DRILL AND WOULD RATHER DRILL FROM THE FRONT FOLLOW THIS STEP. DE-BURR THE HOLES AND TREAT WITH ANTI-RUST TREATMENT.



STEP 1.5.6 DRILL THE HOLES OUT TO APPROX 10MM TO ALLOW FOR ADJUSTMENT IN LATER STEPS. NEXT TRIM THE TOP LIP OFF THE EDGE SHOWN AND SAND BACK SO NO SHARP EDGES ARE LEFT. AGAIN, THIS STEP IS CRITICAL TO ENSURE WIRES DON'T RUB AFTER INSTALL.



STEP 1.5.7 ATTACH THE TOYOTA BRACKET TO THE JBA-CB222BR-D RELAY RELOCATION BRACKET. ENSURE IT IS SLID AS FAR FORWARD AS POSSIBLE BEFORE TIGHTENING. SAND/FILE THE CORNER IF STICKING OUT AT THIS POINT TO ENSURE IT IS CLEAR OF THE LOOM AS SHOWN IN STEP 1.5.8.



STEP 1.5.8 INSTALL THE BRACKET BACK INTO THE CAR USING M6 X 16 FLANGE BOLT FINGER TIGHT ONLY AT THIS STAGE. DON'T INSTALL BOTTOM 2 BOLTS TO THE JACK MOUNTING BRACKET YET.



STEP 1.5.9 IF INSTALLING INTO A HIGHER SPEC MODEL, LOOSEN AND SLIDE THIS BKT ACROSS AS FAR AS POSSIBLE.



STEP 1.5.10 MOVE MANIPULATE THE TOYOTA LOOM BEHIND THIS CORNER AS MUCH AS POSSIBLE AND ENSURE A GOOD GAP.

2. PREPARING THE COMPRESSOR

2.1 ATTACHING THE JBA SLIMLINE BASE BRACKET



STEP 2.1.1 SEPARATE THE TJM COMPRESSOR FROM THE TJM BASE BRACKET UN-DOING THE 6 X M5 SCREWS AT THE TOP AND 6 X M5 SCREWS AT THE BOTTOM.



STEP 2.1.2 REMOVE THE BRASS SPACERS AND RUBBER INSERTS FROM THE BRACKET. IT CAN HELP TO USE A FLAT BLADE SCREWDRIVER AND PUSH THE SMALLER SIDE THROUGH.



STEP 2.1.3 INSTALL THE RUBBER INSERTS IN THE SAME ORIENTATION TO THE JBA TWIN COMPRESSOR BRACKET AS SHOWN. (DON'T FORGET TO RE-INSERT THE BRASS SPACERS AT THIS STAGE).



STEP 2.1.4 FEED THE WIRING HARNESS THROUGH THE JBA BRACKET AS SHOWN.



STEP 2.1.5 RE-ASSEMBLE THE TJM COMPRESSOR USING 6 X M5 SCREWS TOP AND BOTTOM.



STEP 2.1.6 ATTACH THE COMPRESSOR ASSEMBLY TO THE JBA-CB22BR 250 PRADO BRACKET USING 6 X M6 X 16 FLANGE BOLTS.

2.2 OPTIONAL STEPS- ATTACHING THE JBA SLIMLINE TANK BRACKETS BRACKET

IF FITTING KIT 4 OR KIT 5 WITH TANK- FOLLOW THE PROCEEDING STEPS OTHERWISE MOVE TO NEXT STEPS AS REQUIRED.



STEP 2.2.1 REMOVE THE TJM TANK FEET SCREWS AND SLIDE OFF THE TANK.



STEP 2.2.2 ORIENTATE THE TANK AS SHOWN ENSURING THE TANK DRAIN IS FACING THE BOTTOM ON THE RIGHT END. REMOVE 3 X M6 SCREWS SHOWN USING 5MM ALLEN KEY ON BOTH ENDS OF THE TANK.



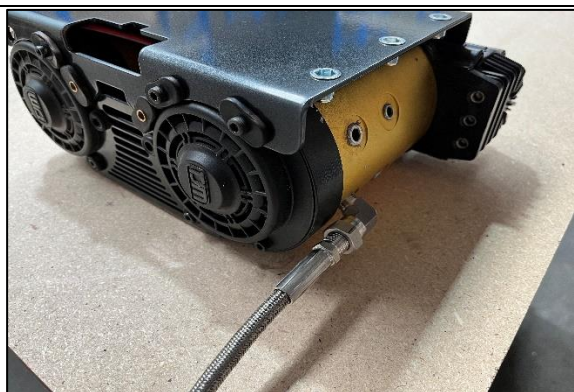
STEP 2.2.3 FIT THE JBA TANK END BRACKETS USING M6 X 20 SCREWS WITH SPRING WASHER UNDER THE HEAD.

IF FITTING THE OPTIONAL JBA TANK DRAIN KIT, USE THE STRAIGHT JOINER FROM THE KIT AND INSTALL AT THIS STEP ALSO.

2.3 OPTIONAL STEPS IF FITTING JBA KITS 2,3,4 AND 5 (ENSURE 567 THREAD SEALANT USED ON ALL JOINS)

IF NOT USING JBA HOSE AND JOINER KITS, INSTALL YOUR OWN SUPPLIED HOSES AND OUTLETS AT THIS STAGE AND MOVE TO STEP 3 BELOW.

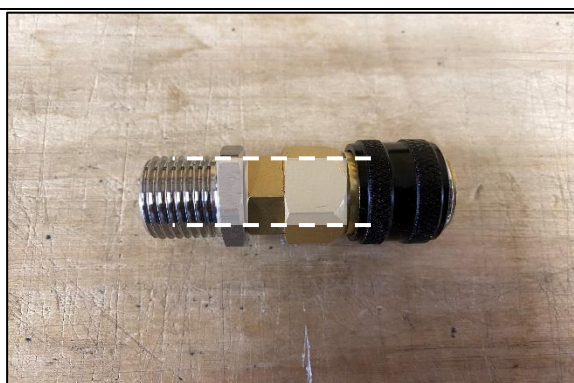
2.3A JBA KIT 2- QUARTER PANEL MOUNT AIR OUTLET AND SWITCH



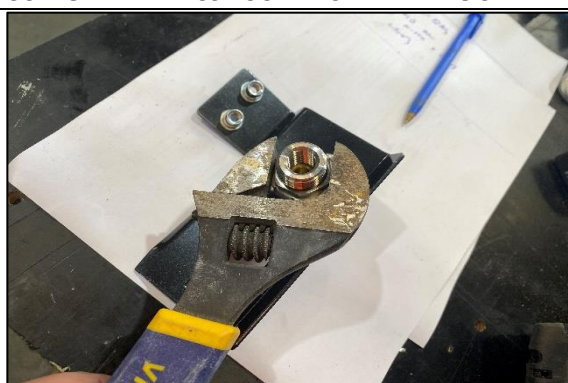
STEP 2.3A.1 INSTALL JBA-CB106 90 DEGREE ELBOW TO THE 1/4" OUTLET IN THE POSITION SHOWN. ATTACH JBA-CB111 400MM HOSE.



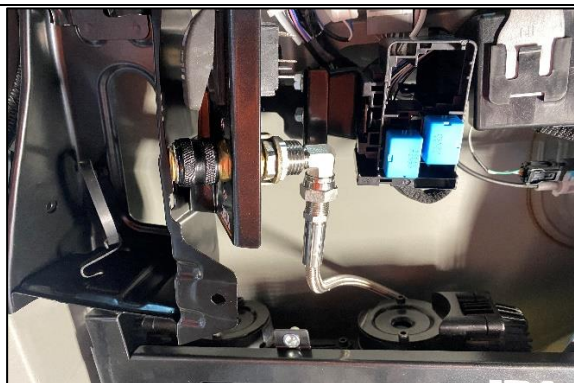
STEP 2.3A.2 PREPARE THE JBA-CB222BR-B AIR SWITCH OUTLET BRACKET. START BY MOUNTING JBA-CB101B HOUSING BRACKET USING M4 X 12 CSK SCREWS AND NYLOC.



STEP 2.3A.3 FIT THE TJM NITTO FITTING (NOT SUPPLIED BY JBA) TO JBA-CB103 BULKHEAD. ENSURE FLAT FACES OF BOTH PARTS ALIGN AS SHOWN.

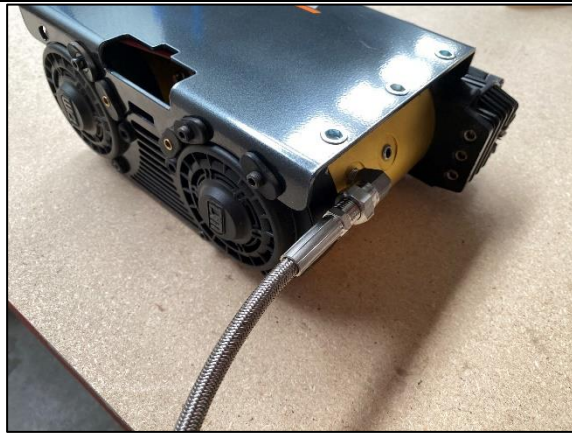


STEP 2.3A.4 PASS THE NITTO AND BULKHEAD ASSEMBLY THROUGH AND TIGHTEN NUT FROM REAR. APPLY LOCTITE TO NUT.



STEP 2.3A.5 REFERENCE PIC FOR LATER

2.3B JBA KIT 3- DRAWER FRONT MOUNT AIR OUTLET AND SWITCH



STEP 2.3B.1 INSTALL JBA-CB106 90 DEGREE ELBOW TO THE 1/4" OUTLET IN THE POSITION SHOWN. ATTACH JBA-CB116 600MM HOSE.



STEP 2.3B.2 PREPARE THE JBA-CB101 RECESSED AIR OUTLET AND JBA-CB901 SWITCH PLATE AS PER SEPARATE INSTRUCTIONS AND COMPLETE CONNECTIONS AFTER COMPRESSOR BRACKET HAS BEEN INSTALLED IN THE VEHICLE.

2.3C JBA KIT 4- QUARTER PANEL MOUNT AIR OUTLET AND SWITCH WITH TANK



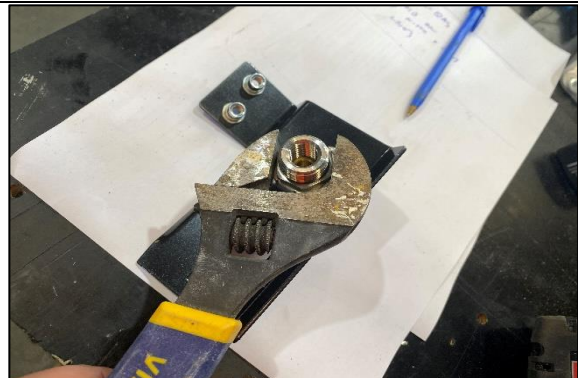
STEP 2.3C.1 INSTALL JBA-CB106 90 DEGREE ELBOW TO THE 1/4" OUTLET IN THE POSITION SHOWN. ATTACH JBA-CB111 400MM HOSE.



STEP 2.3C.2 PREPARE THE JBA-CB222BR-B AIR SWITCH OUTLET BRACKET. START BY MOUNTING JBA-CB101B HOUSING BRACKET USING M4 X 12 CSK SCREWS AND NYLOC.



STEP 2.3C.3 FIT THE TJM NITTO FITTING (NOT SUPPLIED BY JBA) TO JBA-CB103 BULKHEAD. ENSURE FLAT FACES OF BOTH PARTS ALIGN AS SHOWN.



STEP 2.3C.4 PASS THE NITTO AND BULKHEAD ASSEMBLY THROUGH AND TIGHTEN NUT FROM REAR. APPLY LOCTITE TO NUT.



STEP 2.3C.5 INSTALL JBA-CB106 90 DEGREE ELBOW TO THE RIGHT END FACING DOWN AS SHOWN. (CONNECT HOSE IN LATER STEPS)



STEP 2.3C.6 INSTALL JBA-CB106 90 DEGREE ELBOW TO THE TOP 1/4" OUTLET AND ORIENTATE IN THE DIRECTION SHOWN. CONNECT JBA-CB111 400MM HOSE.

2.3D JBA KIT 5- DRAWER FRONT MOUNT AIR OUTLET AND SWITCH WITH TANK



STEP 2.3D.1 INSTALL JBA-CB106 90 DEGREE ELBOW TO THE 1/4" OUTLET IN THE POSITION SHOWN. ATTACH JBA-CB111 400MM HOSE.



STEP 2.3D.2 INSTALL JBA-CB106 90 DEGREE ELBOW TO THE RIGHT END FACING DOWN AS SHOWN. (CONNECT HOSE IN LATER STEPS)



STEP 2.3D.3 INSTALL JBA-CB106 90 DEGREE ELBOW TO THE TOP 1/4" OUTLET AND ORIENTATE IN THE DIRECTION SHOWN. CONNECT JBA-CB113 1200MM HOSE.



STEP 2.3D.2 PREPARE THE JBA-CB101 RECESSED AIR OUTLET AND JBA-CB901 SWITCH PLATE AS PER SEPARATE INSTRUCTIONS AND COMPLETE CONNECTIONS AFTER COMPRESSOR BRACKET HAS BEEN INSTALLED IN THE VEHICLE.

3. INSTALLING THE BRACKET AND COMPRESSOR INTO THE VEHICLE



STEP 3.1 CAREFULLY LIFT THE COMPRESSOR ASSEMBLY INTO THE VEHICLE AND LINE UP WITH MOUNTING POINTS PREVIOUSLY PREPARED IN STEPS 1.4 ABOVE.

START WITH THE LOWER POINTS FIRST AND INSTALL FINGER TIGHT FOR ADJUSTMENT AND ALIGNMENT OF SUBSEQUENT MOUNTING BOLTS.

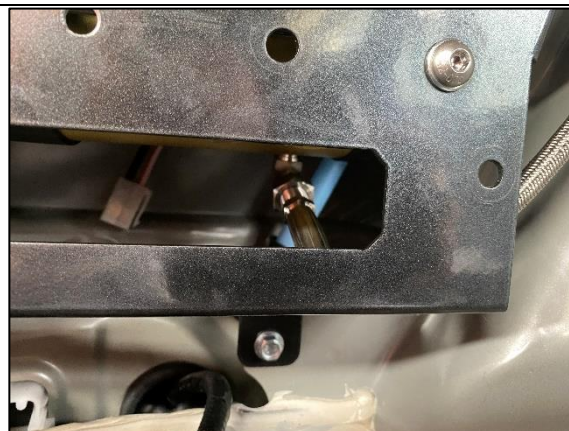
DON'T START WITH THE TOP POINTS AND LET THE COMPRESSOR HANG FROM THESE POINTS WHILE PREPARING THE NEXT BOLTS AS THE WEIGHT OF THE COMPRESSOR CAN ALTER THE BENT ANGLES OF THE TOP TABS AND CAUSE MIS-ALIGNMENT.

IF INSTALLING ANY OF THE JBA KITS, REFER TO BELOW STEPS FOR YORU KIT.

ONCE COMPLETE

- FULLY TIGHTEN ALL MOUNTING SCREWS.
- COMPLETE ELECTRICAL WIRING AS PER TJM COMPRESSOR INSTRUCTIONS.
- NEATLY CABLE TIE THE LOOM AND HOSE AS SHOWN
- TEST COMPRESSOR AND CHECK FOR ANY LEAKS.

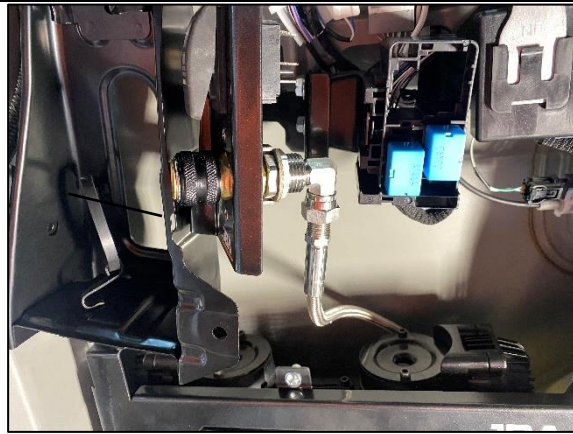
RE-ASSEMBLE VEHICLE AND WIPE DOWN.



STEP 3.2 IN THE BOTTOM BOLT POSITION, INSTALL M6 FLANGE NUT FROM BEHIND.

ONCE BRACKET IS ALIGNED AND ALL MOUNTING BOLTS ARE IN FINGER TIGHT, FULLY TIGHTEN ALL BOLTS AT THIS POINT.

3A. JBA-KIT2 FITTINGS FOR QUARTER PANEL AIR/SWITCH MOUNT



STEP 3A.1 DON'T BOLT THE OUTLET BRACKET INTO THE VEHICLE YET. RUN THE HOSE UP FROM THE COMPRESSOR AND CONNECT TO THE REAR OF THE OUTLET BRACKET AS SHOWN.

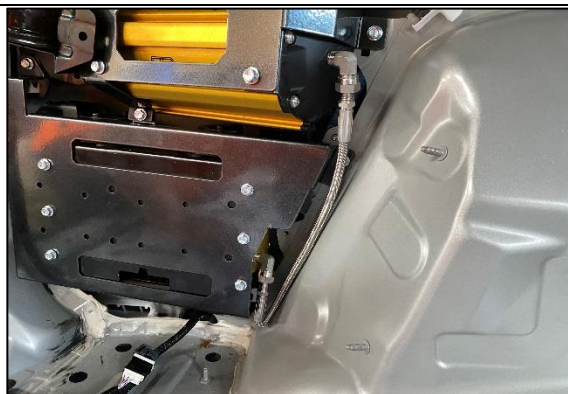


STEP 3A.2 ONCE THE HOSE IS CONNECTED, ALIGN THE OUTLET BRACKET BEHIND THE RELAY RELOCATION BRACKET AND INSTALL 2 X M6 X 16 FLANGE BOLTS FROM THE JACK SIDE AS SHOWN AND TIGHTEN.

3B. JBA-KIT4 FITTINGS FOR QUARTER PANEL OUTLET WITH TANK



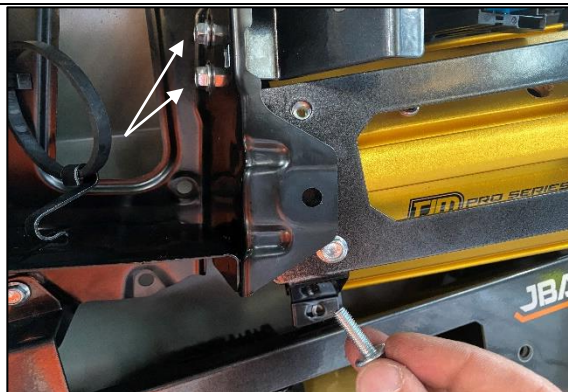
STEP 3B.1. CAREFULLY MANIPULATE THE TANK INTO POSITION AS SHOWN AND INSTALL ONLY THE BOTTOM BOLT TO THE COMPRESSOR BRACKET AT THIS STAGE TO HOLD IN POSITION.



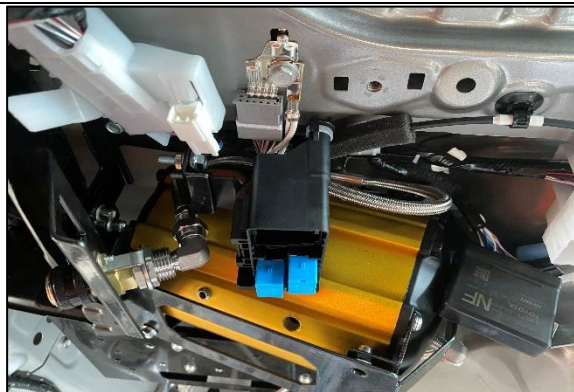
STEP 3B.2 CONNECT THE TANK HOSE TO THE COMPRESSOR AS SHOWN.



STEP 3B.3 INSTALL JBA-CB106 90 DEGREE ELBOW TO THE OUTLET BRACKET IN THE ORIENTATION SHOWN AND CONNECT THE HOSE.



STEP 3B.4 REMOVE THE BOLT INSTALLED IN STEP 3B.1 TO ENABLE EASIER FASTENING OF THE OUTLET BRACKET AND TANK TO THE JACK MOUNT POSITION. ALIGN THE RELAY RELOCATION BRACKET, TANK BRACKET AND OUTLET BRACKET THEN FASTEN USING 2 X M6 X 16 FLANGE BOLTS AS SHOWN.



STEP 3B.5 CHECK CLEARANCES OF HOSES AND BRACKETS AND ENSURE NOTHING IS RUBBING OR CHAFING.

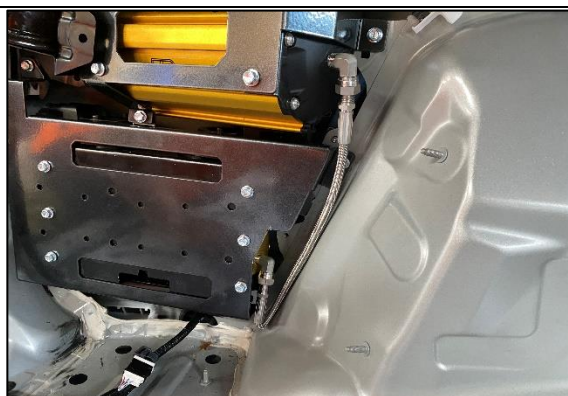


STEP 3B.6 RE-INSTALL THE BOTTOM BOLT TO THE COMPRESOR AND THE RHS BOLT AND FULLY TIGHTEN ONCE ALIGNED.

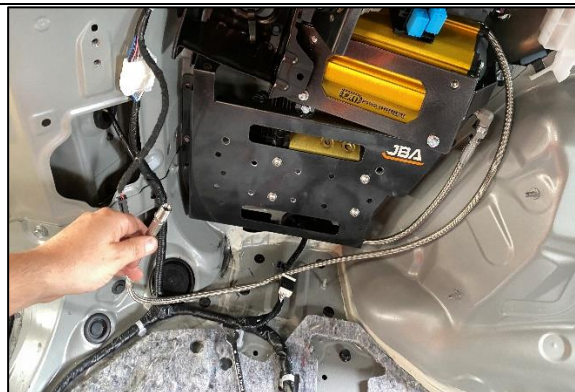
3C. JBA-KIT5 FITTINGS FOR DRAWER FRONT OUTLET WITH TANK



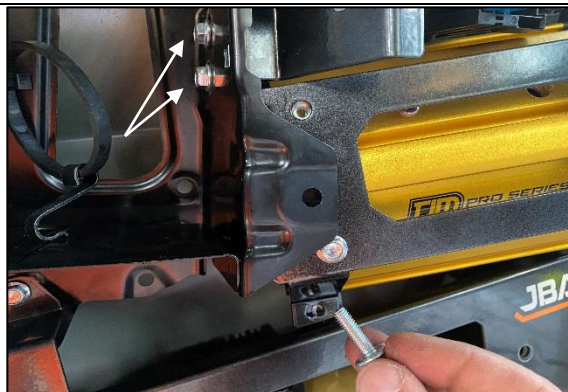
STEP 3B.1. CAREFULLY MANIPULATE THE TANK INTO POSITION AS SHOWN AND INSTALL ONLY THE BOTTOM BOLT TO THE COMPRESSOR BRACKET AT THIS STAGE TO HOLD IN POSITION.



STEP 3B.2 CONNECT THE TANK HOSE TO THE COMPRESSOR AS SHOWN.



STEP 3B.3 RUN THE 1200MM HOSE AS SHOWN AND CONNECT TO DRAWER FRONT ONCE PANELS ARE RE-INSTALLED.



STEP 3B.4 REMOVE THE BOLT INSTALLED IN STEP 3B.1 TO ENABLE EASIER FASTENING OF THE TANK TO THE JACK MOUNT POSITION. ALIGN THE RELAY RELOCATION BRACKET FIRST THEN THE TANK BRACKET AND FASTEN USING 2 X M6 X 16 FLANGE BOLTS AS SHOWN WITH M6 X FLANGE NUTS FROM BEHIND. RE-INSTALL THE BOTTOM BOLT AND RHS BOLT ONCE ALIGNED AND FULLY TIGHTEN ALL BOLTS.