

PRODUCT- TJM SINGLE COMPRESSOR MOUNTING BRACKET

VEHICLE- Y62 PATROL

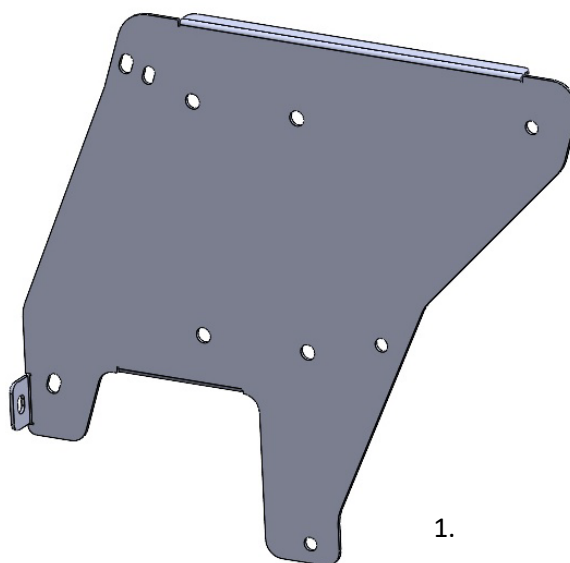
PART NUMBER- JBA-CB205, JBA-CB205KIT2

ESTIMATED FIT TIME

- | | |
|--|--------------|
| - REMOVAL AND REFIT OF SEAT AND INTERIOR PANELS | 60 MINS |
| - REMOVAL AND REFIT OF DRAWER SYSTEM (IF REQUIRED) | 60-90 MINS |
| - PREPARING AND MOUNTING COMPRESSOR | 60 MINS |
| - WIRING COMPRESSOR AND MOUNTING SWITCH | 120-180 MINS |

IMPORTANT NOTES

- READ INSTRUCTIONS CAREFULLY PRIOR TO FITMENT
- ENSURE 567 THREAD SEALANT IS APPLIED TO ALL AIR THREADS INSTALLED
- ENSURE THAT ALL TRIM CLIPS ARE REMOVED FROM THE VEHICLE WHEN REMOVING PANELS AND RE-INSERTED BACK INTO THE PANELS BEFORE RE-INSTALLATION (SEE STEPS 1.18-1.20)
- REFER TO TJM COMPRESSOR INSTALLATION INSTRUCTIONS FOR WIRING SPECIFICATIONS
- NITTO FITTING USED WITH KITS 2 AND 3 SUPPLIED WITH TJM AIRLINE KIT (013COMPKN) SUPPLIED SEPERATLEY (NOT BY JBA) AVAILABLE THROUGH TJM STORES

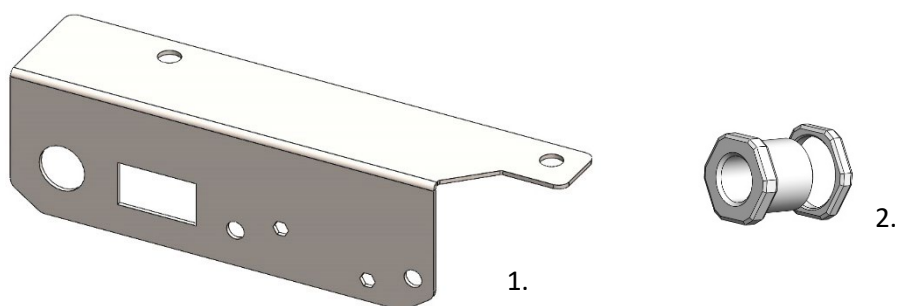


KIT CONTENTS

ITEM	DESCRIPTION	PART NO.	QTY
1	Y62 SERIES SINGLE COMPRESSOR BRACKET	10-CB205A	1
2	M6 x 20MM SEMS ASSMEMBLY Z/Y	B48 0620ZY	5
3	M6 HEX SERR FLANGE NUT ZY	N24 06ZY	1
4	M8 X 16MM HEX HEAD SET SCREW GR 8.8 316 S/S	X07 80168.8316	4
5	5/16 X 3/4 X 18G FLAT WASHER GR 304 S/S	X79 082018G304	8
6	M8 NYLON INSERT LOCK NUT GR 304S/S	X53 8304	4

OPTIONAL PARTS- KIT CONTENTS

JBA-CB205TASF QUARTER PANEL AIR/SWITCH/FUSE OUTLET BRACKET

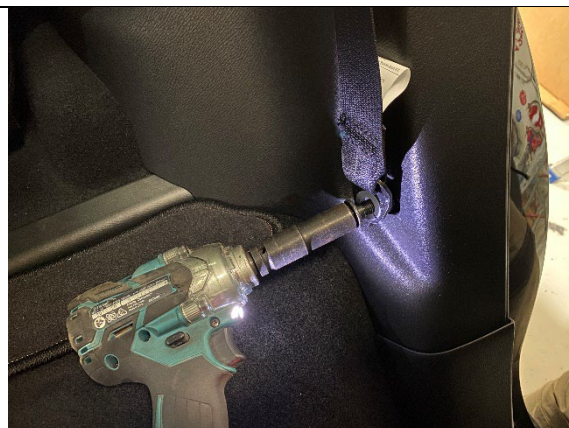


ITEM	DESCRIPTION	PART NO.	QTY
1	Y62 TOOL COMARTMENT AIR/SWITCH/FUSE BRACKET	10-CB205TASF	1
2	JBA COMPRESSOR BULK HEAD AND NUT	JBA-CB103	1
3	14G X 1 CSK PHIL SELF TAPPER GR 304 S/S	X41 1425304	2
4	M4 X 12MM PAN HD PHIL M/T GR 304 S/S	X37 0412PP304	2
5	10MM2 6MM STUD FLARED ENTRY CABLE LUG	57120	2
6	20MM HEAT SHRINK RED 6.4MM	ACX1275	2

1. PREPARING THE VEHICLE- REMOVING THE SEATS



STEP 1.1 START AT THE REAR PASSENGER SIDE DOOR, FOLD THE PASSENGER SECOND ROW OF SEATS FORWARD AND REMOVE PLASTIC TRIM LEVERING UP FROM BODY CLIPS AS SHOWN.



STEP 1.2 REMOVE THE SECOND ROW SEAT BELT USING 14MM SOCKET.



STEP 1.3 MOVE TO REAR OF THE VEHICLE AND REMOVE REAR STORAGE INSERT.



STEP 1.4 REMOVE 2 X M6 BOLTS USING 10MM SOCKET AND REMOVE REAR INFILL FROM VEHICLE.



STEP 1.5 REMOVE 2 X SCREWS IN SIDE INFILL SECTION USING 10MM SOCKET AND REMOVE. CHECK FOR TRIM CLIPS.



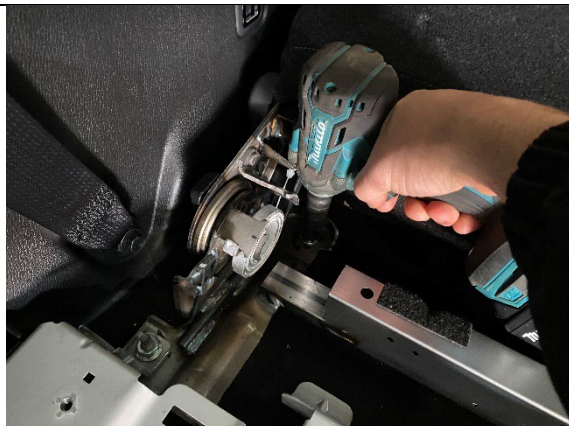
STEP 1.6 STARTING FROM THE LEFT OR RIGHT SIDE, PULL UP THE REAR PLASTIC TRIM AND WORK ACROSS TO FULLY REMOVE. CHECK FOR ANY TRIM CLIPS.



STEP 1.7 REMOVE 2 X TIE DOWN POINTS USING 10MM SOCKET. IT IS EASIER TO POP THE PLASTIC INNER COVER THROUGH THE TIEDOWN AS SHOWN TO ACCESS THE BOLT.



STEP 1.8 STARTING FROM THE LEFT SIDE, START PULLING UP THE CARPETED PANEL AND WORK ACCROSS. CHECK FOR TRIM CLIPS.



STEP 1.9 REMOVE BOLTS FROM PASSENGER SIDE REAR SEAT USING 14MM SOCKET AND PULL SEAT OUT.



STEP 1.10 REMOVE PASSENGER SIDE REAR SEAT BELT USING 14MM SOCKET.



STEP 1.11 REMOVE 2 X TIE DOWN POINTS USING 10MM SOCKET ON PASSENGER SIDE QUARTER PANEL AS SHOWN.



STEP 1.12 REMOVE REAR TRIM CLIP NEXT TO 12V SOCKET AS SHOWN.



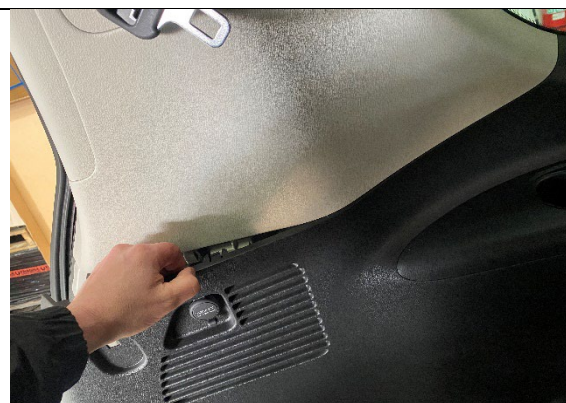
STEP 1.13 MOVE BACK TO PASSENGER SIDE REAR DOOR AND BEGIN PULLING QUARTER PANEL BACK. WORK YOUR WAY FROM BOTTOM TO TOP.



STEP 1.14 MOVE TO THE BACK OF THE VEHICLE AND PULL BACK THE REAR DOOR SEAL.



STEP 1.15 START PULLING QUARTER PANEL BACK AGAIN WORKING FROM BOTTOM TO TOP. THE FIRST 1-2 TRIM CLIPS MAY BE A BIT FIRM BUT THEY WILL POP AND BECOME EASIER



STEP 1.16 START WORKING ALONG THE TOP OF THE PANEL ALONG THE BOTTOM OF THE WINDOW. PUSH ON THE TOP PANEL TO SEPARATE IF REQUIRED.



STEP 1.17 THE QUARTER PANEL SHOULD BE FREE NOW. UNPLUG THE 12V SOCKET FROM THE REAR AND CAREFULLY REMOVE THE QUARTER PANEL FROM THE VEHICLE. CHECK FOR ANY TRIM CLIPS IN THE BODY (REFER TO STEPS 1.18-1.20 BELOW)

REFERENCE PICS FOR TRIM CLIPS



STEP 1.18 REFERENCE PICS FOR TRIM CLIP (EXAMPLE ONLY). AS YOU ARE REMOVING PANELS, KEEP NOTICE OF ANY CLIPS THAT HAVE REMAINED IN THE VEHICLE- NORMALLY WHITE OR GREEN AS SHOWN.



STEP 1.19 USE A TRIM CLIP REMOVER TO POP OUT OF THE VEHICLE AS SHOWN.



STEP 1.20 RE-INSERT INTO THE PLASTIC TRIM PANEL LOCATION. THEY WILL NORMALLY SLIDE IN AND POP INTO POSITION. THESE STEPS WILL ENSURE AN EASIER RE-INSTALLATION OF THE PANELS LATER.

2. PREPARING COMPRESSOR AND BRACKET



STEP 3.1 ROTATE THE COMPRESSOR 90 DEGREES (REFER TJM INSTRUCTIONS AS REQUIRED) ENSURING THE POWER WIRES ARE ON THE UNDERSIDE OF THE COMPRESSOR.



STEP 3.2. FIT THE TJM PRESSURE SWITCH AND JBA-CB106 90 DEGREE ELBOW TO THE TOP SIDE OF THE COMPRESSOR AS SHOWN. ENSURE ELBOW IS FITTED USING 567 THREAD SEALANT AND ORIENTATED 45 DEGREES AS SHOWN.



STEP 3.3 FIT COMPRESSOR TO THE BRACKET IN THE ORIENTATION AS SHOWN USING M8 X 16 BOLTS WITH WASHER UNDER THE HEAD AND NYLOC NUT WITH WASHER FROM BEHIND.



STEP 3.4 FIT STAINLESS HOSE TO THE ELBOW USING 567 SEALANT.

3. PREPERATION AND INSTALLATION INTO VEHICLE



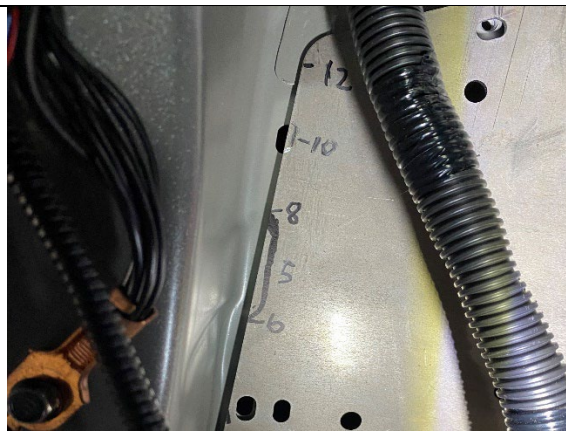
STEP 4.1 TRIM THE SOUND DEADENING ON THE REAR QUARTER PANEL RMOVED IN STEP 1 AS SHOWN.



STEP 4.2. CHECK THE BODY SEAL ON THE WHEEL ARCH AND TRIM BACK FLAT AS SHOWN.



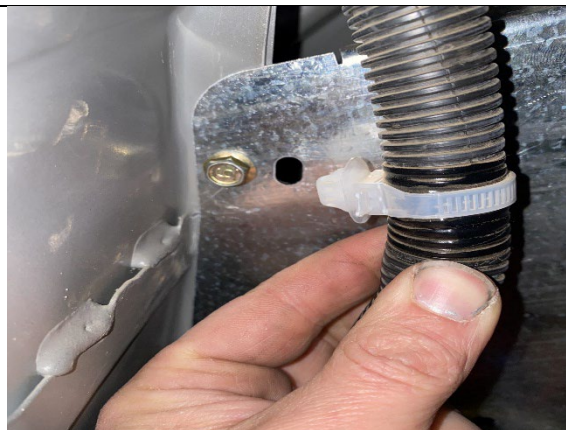
STEP 4.3. LOCATE THE BODY HOLE JUST ABOVE THE BODT SEAL TRIMMED IN STEP 4.2 AND CLEAR OUT TO 7MM AND TREAT WITH RUST SEALANT.



STEP 4.4 PULL BACK THE BODY LOOM FROM THE LEFT HAND SIDE AS SHOWN.



STEP 4.5 LIFT THE COMPRESSOR BRACKET INTO PLACE AND FASTEN USING M6 X 20 SEMS AND WHIZZ NUTS.

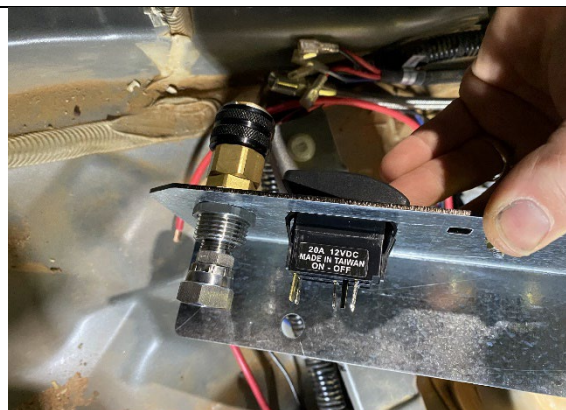


STEP 4.6 RECLIP THE MAIN BODY LOOM REMOVED IN STEP 4.4 INTO THE COMPRESSOR BRACKET ON THE LEFT HAND SIDE SLOTS ALLOCATED.

4. PREPERATION AND INSTALLATION OF OPTIONAL TOOL COMPARTMENT FUSE/AIR/SWITCH PANEL (JBA-CB205TASF)



STEP 5.1 INSTALL CARLING SWITCH AND ANSH FUSE HOLDER (SUPPLIED WITH TJM COMPRESSOR) USING M4 X 12 SCREWS. INSTALL JBA-CB103 BULK HEAD AS SHOWN, APPLY THREAD SEALANT TO NUT FROM BEHIND.



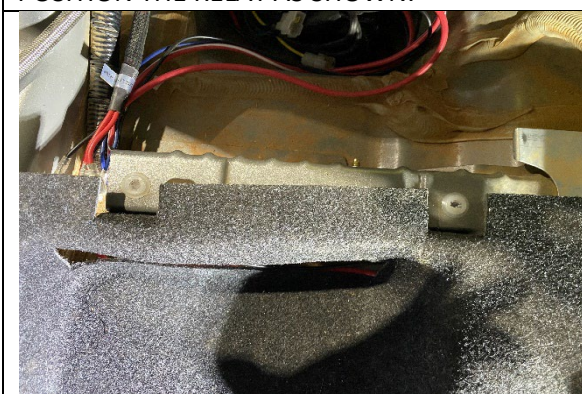
STEP 5.2 FIT JBA-CB104 0 DEGREE ELBOW USING 567 THREAD SEALANT ON THE REAR OF THE BULKHEAD. INSTALL TJM NITTO FITTING (SUPPLIED IN 013COMPKN) USING 567 THREAD SELAT TO FRONT OF BULK HEAD.



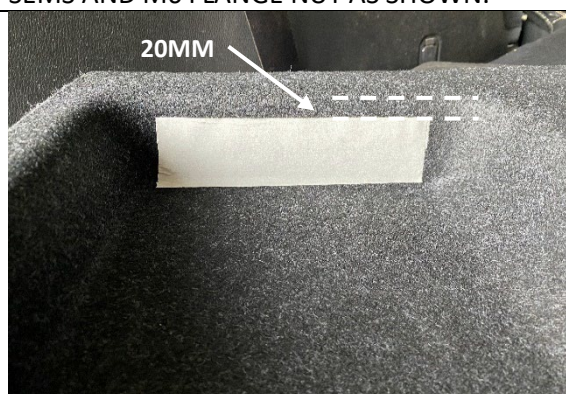
STEP 5.3 FEED THE WIRING LOOM DOWN TOWARDS THE TOOL COMPARTMENT AND POSITION THE RELAY AS SHOWN.



STEP 5.4 FASTEN THE RELAT ON THE UNDERSIDE OF THE BRACKET USING M6 X 20 SEMS AND M6 FLANGE NUT AS SHOWN.



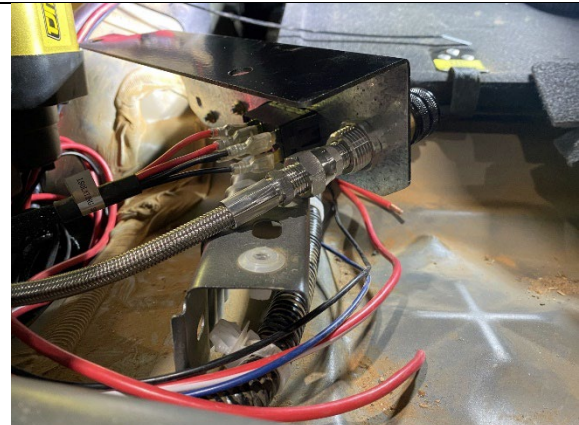
STEP 5.5 POSITION THE TOOL COMPARTMENT CARPET IN PLACE AND TRIM EITHER SIDE OF THE PLUGS AND FOLD CARPET BACK.



STEP 5.6 CUT A HOLE OUT OF THE END OF THE CARPET APPROX 15-20MM FROM ALL EDGES AS SHOWN



STEP 5.7 FEED THE AIRLINE, SWITCH LOOM AND FUSE WIRES THROUGH THE HOLE JUST CUT IN STEP 5.6



STEP 5.8 CONNECT UP THE AIRLINE AND SWITCH LOOM TO JBA-CB205TASF BRACKET AS SHOWN



STEP 5.9 FEED THE POWER WIRE THROUGH EITHER SIDE OF THE FUSE, TERMINATE AND HEAT SHRINK.



STEP 5.10 INSTALL THE BRACKET TO THE CAPTIVE PLUGS EXPOSED IN STEP 5.5 USING 14G X 1 CSK PHIL SELF TAPPER.

6. FINAL STEPS



STEP 6.1 NEATLY CABLE TIE AND LOOSE LOOMS OR AIR LINES AND TRIM. TEST ALL AIR CONNECTIONS FOR AIR LEAKS AND CYCLE COMPRESSOR CHECKING ELECTRICAL FUNCTIONALITY.



STEP 6.2 REFIT REAR QUARTER PANEL AND SEATS REFERING TO STEPS 1.1-1.20 ABOVE IF REQUIRED. VACUUM AND WIPE DOWN ALL SURFACES.