

PRODUCT- REAR TAILGATE LED LIGHT

VEHCILE- Y62 PATROL 2013+

PART NUMBER- JBA-LB805

ESTIMATED FIT TIME

- FITMENT OF LED LIGHT 45-60 MINS
- ELECTRICAL WIRING AND FITMENT OF SWITCHES 60-120MINS

IMPORTANT NOTES

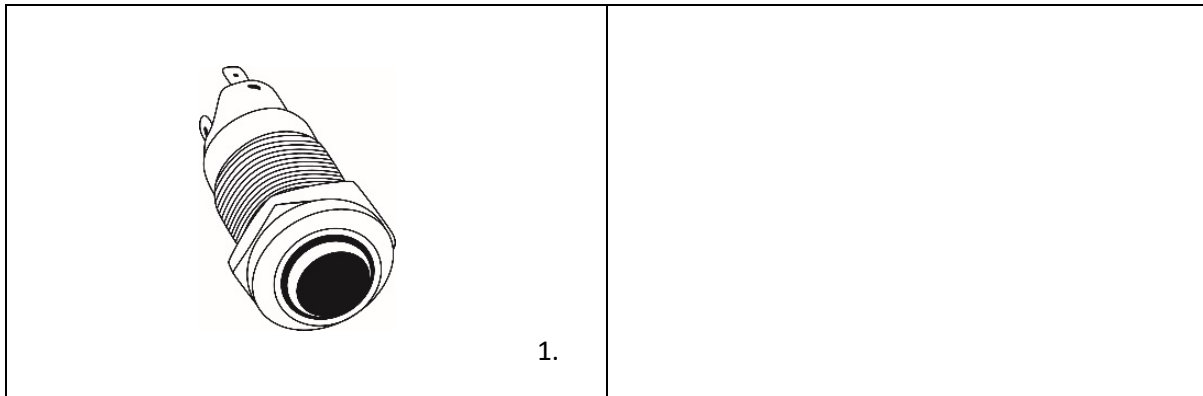
- READ INSTRUCTIONS CAREFULLY PRIOR TO FITMENT
- SET ALL REMOVED PARTS ASIDE ON A SOFT CLEAN SURFANCE FOR RE-INSTALLATION
- ENSURE THAT ALL TRIM CLIPS ARE REMOVED FROM THE VEHICLE WHEN PULLING PANELS OUT AND RE-INSERTED BACK INTO THE PANELS BEFORE RE-INSTALLATION (SEE STEPS 1.9-1.10)

KIT CONTENTS



ITEM	DESCRIPTION	PART NO.	QTY
1	JBA Y62 PATROL REAR TAILGATE LIGHT	10-LB805LW	1
2	JBA Y62 PATROL REAR TAILGATE LIGHT FASCIA	10-LB805A	1
3	JBA Y62 PATROL REAR TAILGATE LIGHT REAR SURROUND	10-LB805B	1

OPTIONAL KIT PARTS- JBA TWIN SWITCH



ITEM	DESCRIPTION	PART NO.	QTY
1	JBA 16MM ILLUMINATED SWITCH	10-LB805S	1

1. PREPARING THE VEHICLE



STEP 1.1 REMOVE REAR HANDLE INSERT LEVERING UP FROM BOTTOM USING TRIM TOOL.



STEP 1.2 USING A TRIM CLIP REMOVER, REMOVE 4 X TRIM CLIPS ALONG TAILGATE.



STEP 1.3 REMOVE 3 X PANELS IN TAILGATE GENTLY PRYING DOWN WITH A FLAT BLADE SCREWDRIVER.



STEP 1.4 PULL THE REAR TRIM DOWN FROM THE PASSENGER SIDE LARGE INSERT TO ENABLE A GRIP ON THE TRIM FOR NEXT STEP.



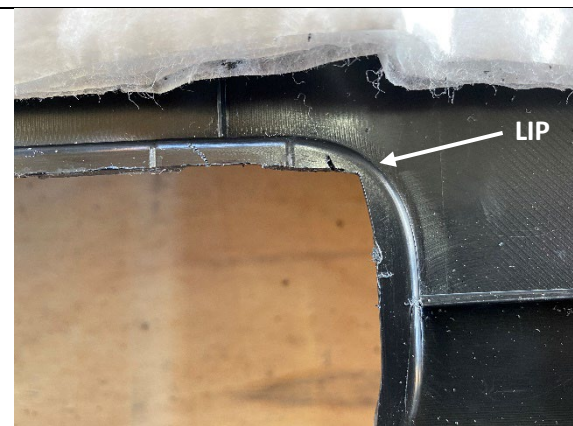
STEP 1.5 START FROM THE CORNER AND BEGIN PULLING DOWN POPPING THE TRIM CLIPS. THESE WILL BE FIRM BUT WILL POP. WORK YOUR WAY ACROSS THE REAR. FULLY REMOVE REAR PANEL AND SIT ON A SOFT WORKSPACE.



STEP 1.6 IN PREPERATION FOR WIRING IN LATER STEPS, REMOVE THE UPPER SECTIONS. CHECK REAR TAILGATE AT THIS STAGE FOR ANY TRIM CLIPS THAT HAVE REMAINED AND REFER TO REFERENCE STEPS ON NEXT PAGE.

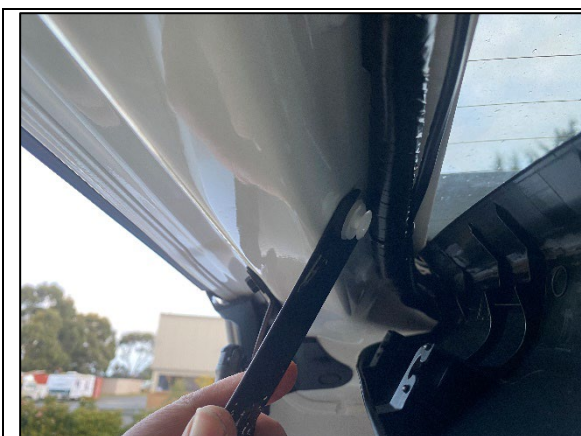


STEP 1.7 WITH THE REAR SECTION ON A SOFT SURFACE, TRIM THE SECTION BETWEEN THE TWO NOTCHES TOP AND BOTTOM AS SHOWN.



STEP 1.8 THE CORNERS NEED TO BE SQUARED OUT SLIGHTLY AS SHOWN. BE CAREFUL NOT TO CUT ALL THE WAY TO THE LIP AS THIS MAY BE SEEN FROM UNDERNEATH IF CUT TOO FAR. TEST FIT JBA-LB805A FASCIA IN TO ENSURE CLEARNACE AND TRIM ADDITIONAL SECTIONS IF REQUIRED.

REFERENCE STEPS FOR TRIM CLIPS

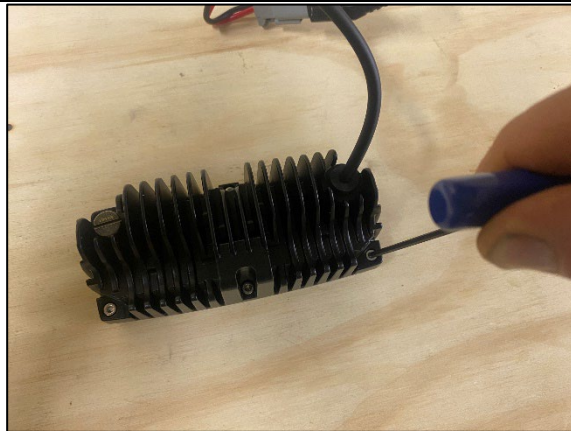


STEP 1.9 REFERENCE PICS FOR TRIM CLIPS (EXAMPLE ONLY). AS YOU ARE REMOVING PANELS, KEEP NOTICE OF ANY CLIPS THAT HAVE REMAINED IN THE VEHICLE AND REMOVE WITH TRIM CLIP REMOVER.

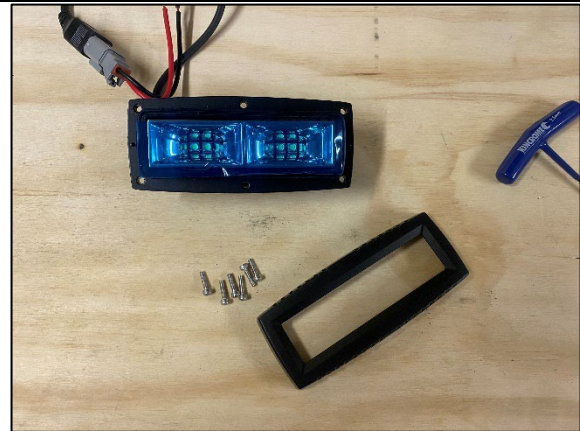


STEP 1.10 RE-INSERT CLIPS INTO THE PLASTIC TRIM PANEL LOCATION. THEY WILL NORMALLY SLIDE IN AND POP INTO POSITION. THIS STEP WILL ENSURE AN EASIER RE-INSTALLATION OF THE PANELS LATER.

2. INSTALLING THE LIGHT



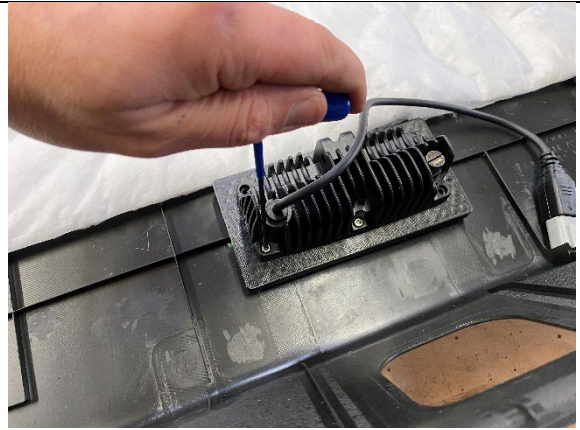
STEP 2.1 REMOVE 6 X 2.5MM ALLEN KEY SCREWS FROM THE REAR OF THE LIGHT.



STEP 2.2 SEPARATE THE FRONT FASCIA AND DISCARD (KEEP THE SCREWS).



STEP 2.3 PRESS THE JBA FASCIA (JBA-LB805A) INTO THE REAR TAILGATE SECTION FROM THE FRONT SIDE (THIS WILL BE FIRM AS IT IS A SNUG FIT). FROM THE REAR SIDE, PLACE THE REAR SURROUND (JBA-LB805B) AS SHOWN.



STEP 2.4 INSTALL LED LIGHT USING 6 X 2.5MM SCREWS REMOVED IN STEP 2.1. FIT THE 6 X SCREWS LOOSELY AND ENSURE LIGHT IS SEATED AND SQUARE BEFORE FULLY TIGHTENING ALL SCREWS.

3. WIRING THE LIGHT

A NEW POWER WIRE WILL BE REQUIRED TO BE RUN FROM THE VEHICLE INTO THE TAILGATE AS THERE IS NO WIRING IN THE TAILGATE THAT CAN BE USED TO POWER THE 4A LED. MIN 4MM WIRE IS RECOMMENDED.



STEP 3.1 IT CAN BE EASIEST TO RUN THE POWER FROM THE REAR JACK PANEL AREA. FROM THERE, PULL BACK THE REAR DOOR GASKET AND TRIM PANELS BACK ENOUGH TO RUN POWER WIRE UP THE SIDE OF THE VEHICLE AS SHOWN.



STEP 3.2 GENTLY PULL DOWN THE ROOF LINING AND RUN ALONG TO DOOR GROMMET. FEED THE WIRE THROUGH THE GROMMET AND INTO THE TAILGATE SECTION AS SHOWN.

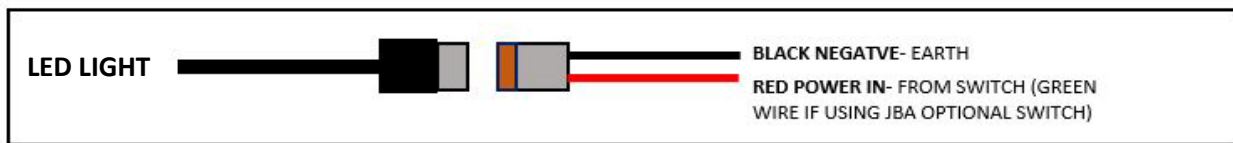


STEP 3.3 ROUTE THE POWER ALONG THE DRIVERS SIDE ALONG THE ORIGINAL BODY LOOM AS SHOWN AND CABLE TIE NEATLY.

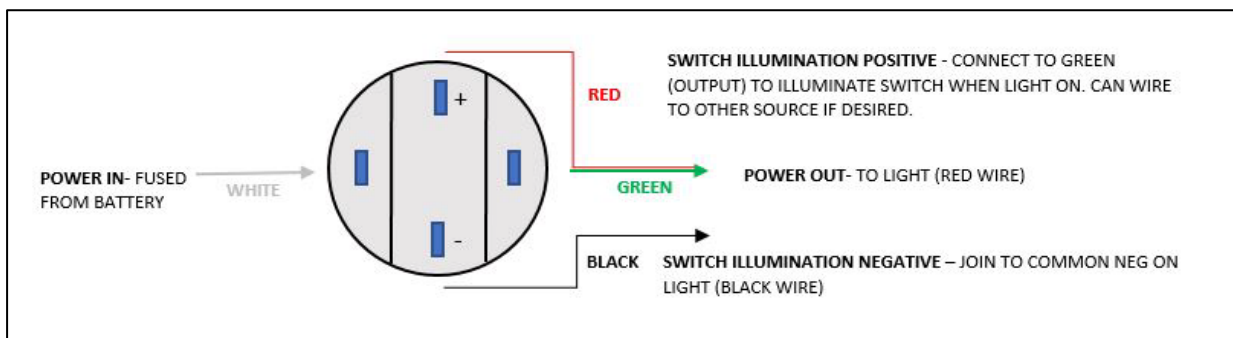


STEP 3.4 ATTACH EARTH WIRE TO EARTH BOLT IN TAILGATE AND SOLDER TAIL OF LED LIGHT AS SHOWN.

LED LIGHT WIRING DIAGRAM- ENSURE A 10A RATED FUSE IS USED



WIRING OPTIONAL JBA PUSH BUTTON SWITCH



4. FINAL STEPS



STEP 4.1 RE-INSTALL REAR TAILGATE PANELS AND PLUG LED LIGHT INTO WIRING INSTALLED IN STEPS 3.1 TO 3.5 ABOVE. TEST LIGHT.



STEP 4.2 REFIT OUTER COVER PANELS, REAR HANDLE INSERT AND 4 X TRIM CLIPS REMOVED IN STEPS 1.1-1.3 AND WIPE DOWN PANELS.