

PRODUCT- JBA SLIM LINE BATTERY TRAY BEHIND SEAT

VEHICLE- TOYOTA N90 HILUX 08/25+ DUAL CAB

PART NUMBER- JBA-BT443B

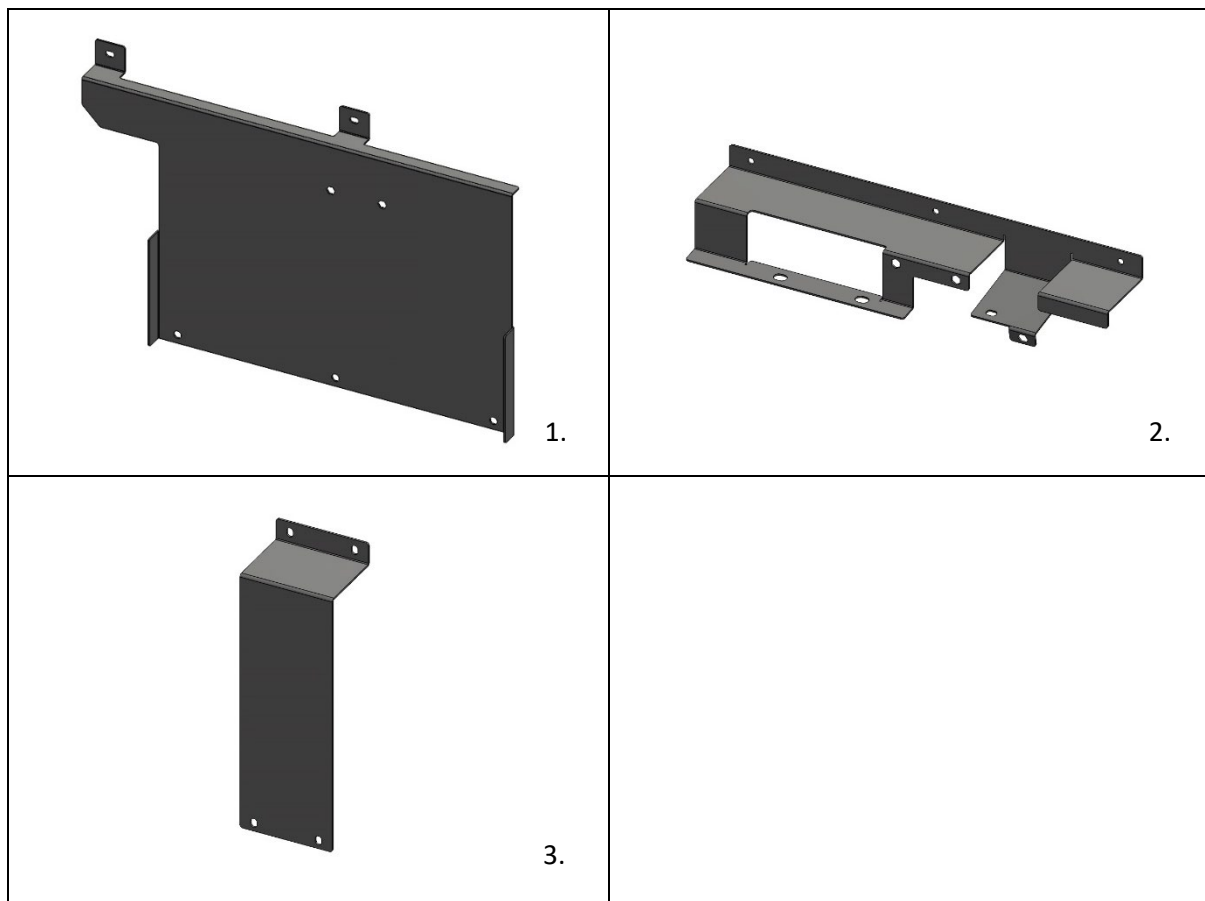
ESTIMATED FIT TIME

- PREPARATION OF VEHICLE 45 MINS
- PREPARATION AND MOUNTING OF BATTERY TRAY 45 MINS
- PREPARATION OF DCDC CHARGER (IF FITTED) 30MINS
- WIRING AND ELECTRICAL (CAN VARY WIDELY BASED ON INDIVIDUAL) 90+ MINS

IMPORTANT NOTES

- READ INSTRUCTIONS CAREFULLY PRIOR TO FITMENT

KIT CONTENTS

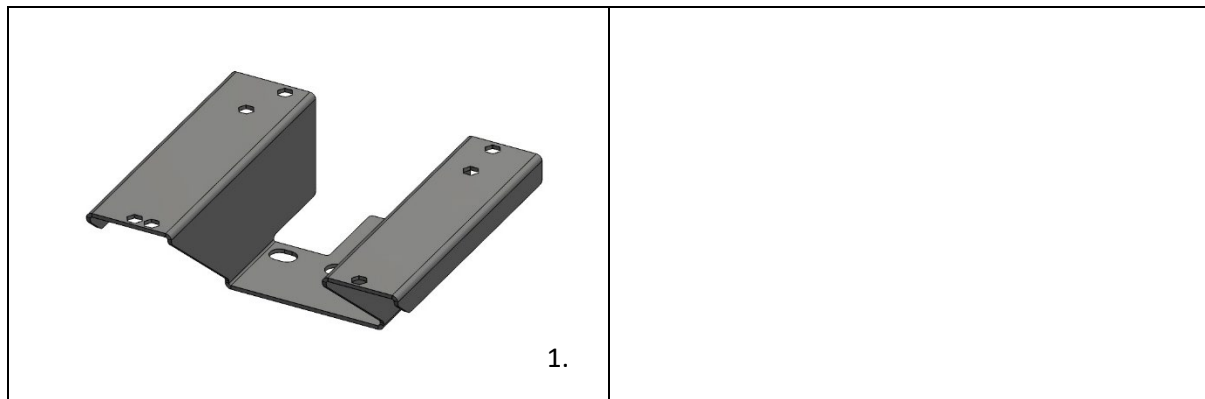


ITEM	DESCRIPTION	PART NO.	QTY
1	JBA N90 HILUX BATTERY TRAY BODY	10-BT443-A	1
2	JBA N90 HILUX BATTERY TRAY BASE	10-BT443-B	1
3	JBA N90 HILUX BATTERY TRAY STRAP	10-BT443-C	1

4	M6 X 16MM CSK HD PHIL M/T	X37 0616CPZP	3
5	M6 FLANGED NYLON INSERT LOCK NUT ZP	X53 06FLZP	3
6	M6 FLANGED HD KNURLED RIV NUT G/R 0.70-3.20 ZP	R22 06FLLKN-AVK	2
7	M6 X 16MM HEX FLANGED SERRATED SET SCR GR 8.8 ZP	B12 060168.8FSZP	7

OPTIONAL KIT PARTS

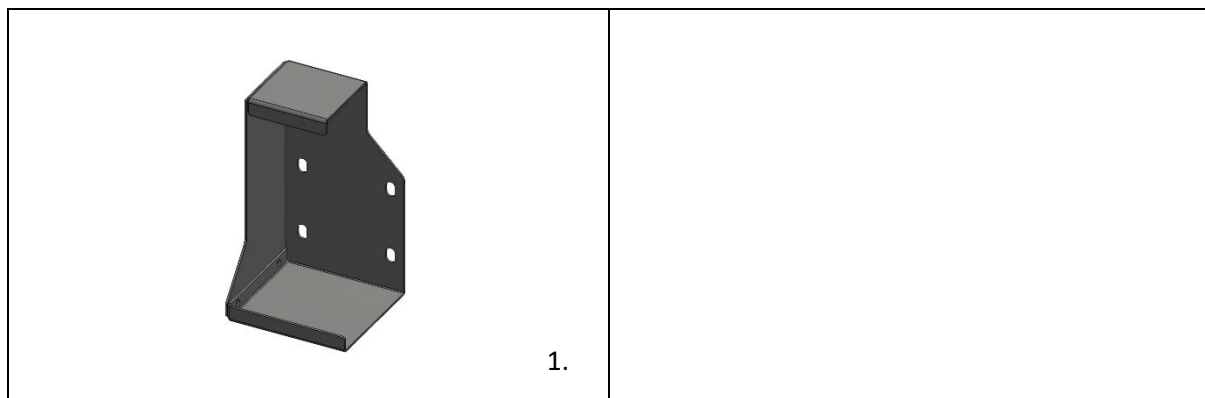
JBA-BT443B-RKIT1A-B JBA UNDER SEAT MOUNT DCDC BRACKET



ITEM	DESCRIPTION	PART NO.	QTY
1	JBA N90 HILUX DCDC MOUNTING BRACKET UNDER SEAT	JBA-BD443-A	1

OPTIONAL KIT PARTS

JBA-BT443B-RKIT1A-C JBA JACK RELOCATION BRACKET



ITEM	DESCRIPTION	PART NO.	QTY
1	JBA N90 HILUX JACK RELOCATION BRACKET	JBA-BT442-J	1

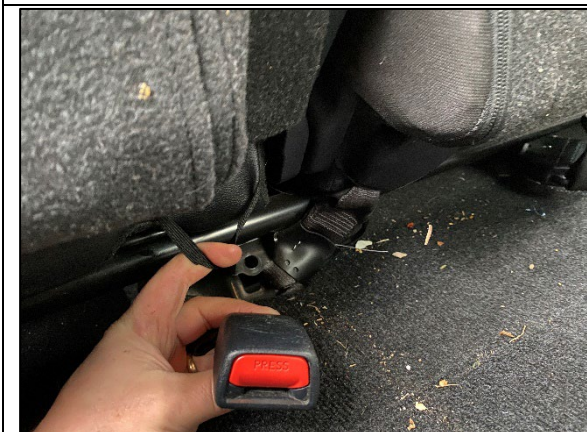
1. PREPARING THE VEHICLE



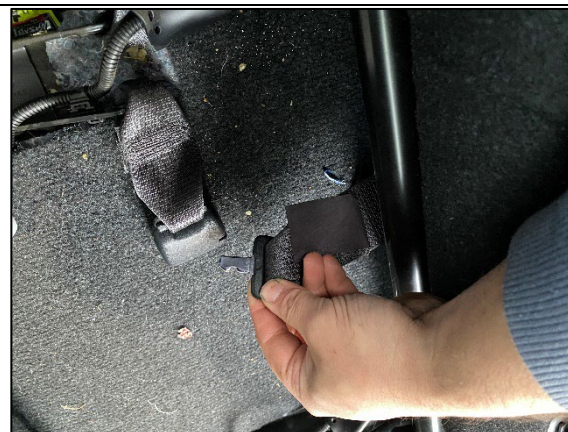
STEP 1.1 FOLD THE BASE SECTION OF THE SEATS UP AND BOLT .



STEP 1.2 IF THE VEHICLE IS 48V, USE A LONG FLAT HEAD SCREW DRIVER TO RELEASE THE CLIP UNDER THE SEAT. IT CAN HELP TO SIT SOMETHING LIKE A DRILL UNDER THE BASE TO STOP IT FROM RE-CATCHING WHILE FOLLOWING THE NEXT STEPS.



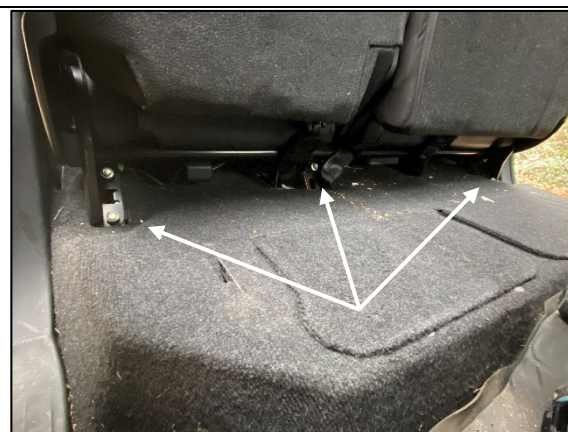
STEP 1.3 PULL ALL THE SEAT BELT CLIPS DOWN THROUGH THE ELASTIC HOLDERS.



STEP 1.4 FOR THE CENTRE POSITION, USE A SMALL FLAT BLADE SCREW DRIVER TO UNCLIP THE SMALLER BELT AS SHOWN.



STEP 1.5 REMOVE THE PLASTIC COVER ON THE DRIVERS SIDE AND UNCLIP THE WIRING LOOM AS SHOWN.



STEP 1.6 REMOVE THE 5 SEAT BOLTS FROM THE BASE OF THE SEAT.



STEP 1.7 LIFT THE SEAT UP TO RELEASE THE TWO TABS SITTING IN THE BACK WALL RETAINERS SHOWN IN THE NEXT PIC.



STEP 1.8 REFERENCE OF BACK WALL RETAINER. ONCE SEAT RELEASE, REMOVE CAREFULLY FROM VEHICLE AND SIT ON A SOFT CLEAN SURFACE.



STEP 1.9. REMOVE THE PLASTIC INNER RETAINER (X2) PUSHING IN THE TABS UNDERNEATH TO RELEASE.



STEP 1.10. REMOVE THE 2 CHILD RESTRAINT BOLTS.



STEP 1.11 REMOVE REMAINING COVERS AND CLIPS TO FULLY REMOVE TOP PLASTIC COVER AS SHOWN.



STEP 1.12 REMOVE THE PLASTIC TRIM PLUGS ALONG THE BACK WALL AND MARK THE METAL IN BEHIND THE CARPET AND THE CARPET FOR THE 2 LOCATIONS SHOWN.



STEP 1.13 REMOVE THE TOP BRACKET AND FULLY REMOVE THE REAR CARPET.



STEP 1.14 DRILL OUT THE MARKED 2 X HOLES TO 10MM.



STEP 1.15 INSTALL 2 X M6 CAPTIVE RIV NUTS SUPPLIES IN THE TO DRILLED LOCATIONS.



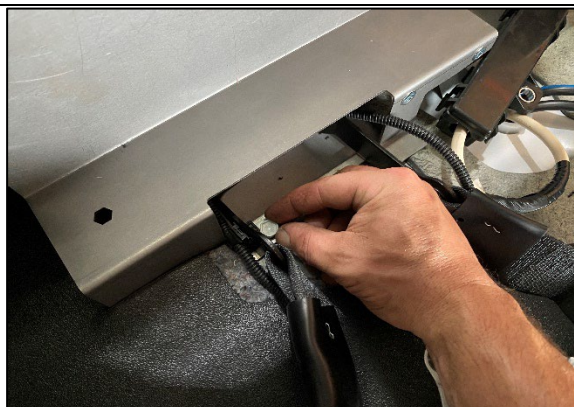
STEP 1.16 IT IS ALSO SUGGESTED TO CLEAR OUT THE CARPET IN THESE 2 LOCATIONS TO APPROX 20MM USING A STEP DRILL TO MAKE INSTALL OF THE TRAY EASIER LATER.



STEP 1.17 REINSTALL THE CARPET ON THE BACK WALL. REMOVE THE CENTRE SEAT BRACKET AND SEAT BELT CLIP BRACKET AS SHOWN (3 X BOLTS TOTAL).



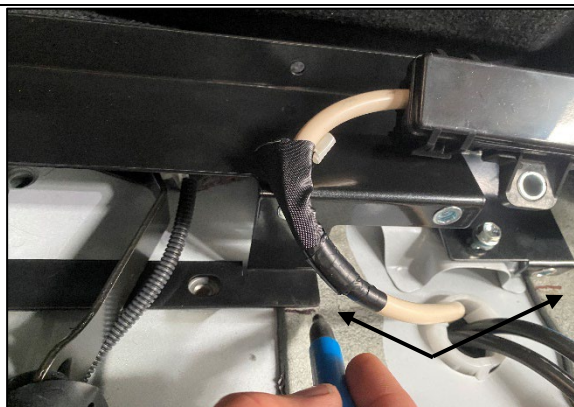
STEP 1.18 IN 48V VOLT VEHICLES REMOVE THE NEGATIVE BUSBAR AS SHOWN.



STEP 1.19 DRY FIT THE BASE SECTION (JBA-BT443-B) INTO THE TWO CAPTIVE POINTS OF THE SEAT BRACKET AS SHOWN FINGER TIGHT.



STEP 1.20. MARK THE CARPET/VINYL FROM BEHIND THE BASE BRACKET AS SHOWN ALONG THE EDGE. (NOTE THIS PIC SHOWS THE CARPET ALREADY CUT AND SITTING ON TOP OF THE FRONT LIP WHICH IS WHAT IT SHOULD LOOK LIKE AFTER BEING CUT LATER). FOR 12V VEHICLES MARK EITHER SIDE OF THE CENTRE BRACKET)



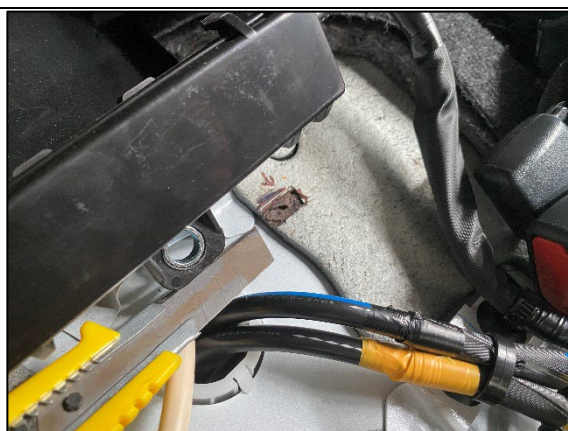
STEP 1.21 IN 48V VEHICLES, ALSO MARK THE SOUND DEADENING FOAM IN THE TWO AREAS BELOW THE TRAY SHOWN.



STEP 1.22 REMOVE THE BASE BRACKET AND TRIM THE CARPET ALONG THE LINE DRAWN IN STEP 1.20 ABOVE.



STEP 1.23 TRIM THE SOUND DEADENING IN THE TWO LOCATIONS PREVIOUSLY MARKED FOR 48V VEHICLES. LEFT SIDE SHOWN.



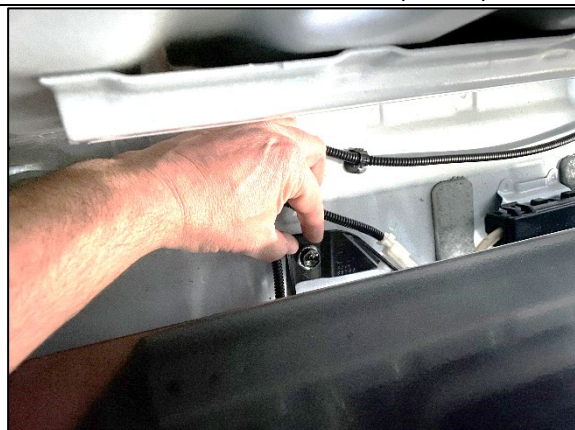
STEP 1.24 TRIM BOTH POSITIONS TO ALLOW TRAY TO SIT FLAT. RIGHT SIDE SHOWN.



STEP 1.25 BRING THE BASE BRACKET BACK INTO POSITION AND BEFORE FITTING, BOLT THE NEGATIVE BUS BAR ON TO THE BOTTOM NUTSERT OF THE BASE BRACKET (IF 48V).



STEP 1.26 LOOSELY POSITION THE BASE BRACKET AND FEED THE SEAT BELT CLIP BRACKET BACK INTO POSITION AS SHOWN.



STEP 1.27 TILT THE BASE BRACKET FORWARD AND FROM BEHIND, REINSTALL THE SEAT BELT CLIP BRACKET.



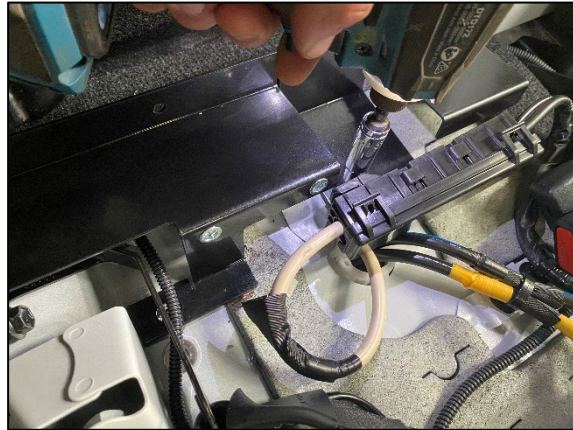
STEP 1.28 RE INSTALL THE CENTRE SEAT BRACKET OVER THE TOP OF THE JBA BASE BRACKET USING ORIGINAL BOLTS FINGER TIGHT.



STEP 1.29 INSTALL THE JBA TOP BRACKET (JBA-BT443-A) TO THE BASE BRACKET USING M6 X 16 CSK SCREWS AND NUTS. ENSURE THE TOP BRACKET IS IN FRONT OF THE BASE BRACKET LIP.



STEP 1.30 TIGHTEN THE 3 X SCREWS USING A NO.3 PHILLIPS HEAD DRIVE. ENSURE ALL SCREWS ARE FLAT AND SEATED PROPERLY.



STEP 1.31 FOR 4V VEHICLES, FIT M6 X 16 HEX BOLT INTO THE ORIGINAL NEGATIVE BUS BAR POSITION.



STEP 1.32 INSTALL 2 X M6 X 16 HEX BOLTS INTO THE TOP POSITION NUTSERTS PREVIOUSLY INSTALLED IN STEP 1.15.



STEP 1.33 NOW FULLY TIGHTEN ALL BATTERY TRAY BOLTS AND CHECK ANY CLEARANCES AND MAKE ADJUSTMENTS IF REQUIRED.



STEP 1.34 INSTALL THE BATTERY AND BATTERY TRAY STRAP (JBA-BT443-C) USING M6 X 16 HEX BOLTS AS SHOWN.

2. INSTALLING OPTIONAL MOUNTING ACCESSORIES

2A. UNDER SEAT DCDC MOUNTING BRACKET

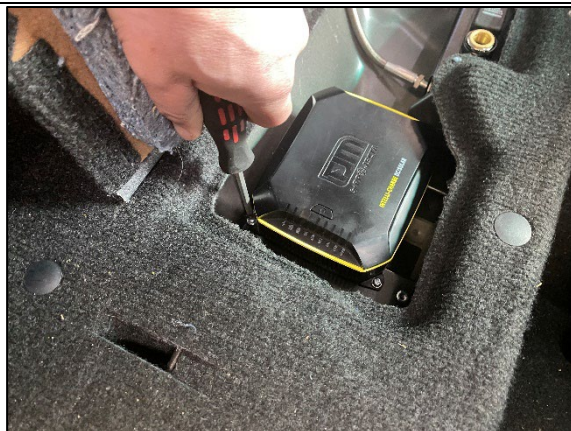
NOTE IF FITTING TO A 48V VEHICLE, THIS BRACKET CAN ONLY BE FITTED TO THE DRIVERS SIDE AND THE JACK WILL NEED TO BE RELOCATED.



STEP 2A.1. THE DCDC BRACKET IS LOCATED UNDER THE SECOND ROW OF SEATS. LIFT UP THE COVER AND REMOVE THE 2 X M8 CAPTIVE BOLTS IN THE FLOOR.



STEP 2A.2. LOCATE THE DCDC CHARGER INTO THE FLOOR WELL AND REINSTALL THE 2 X M8 CAPTIVE BOLTS AS SHOWN.



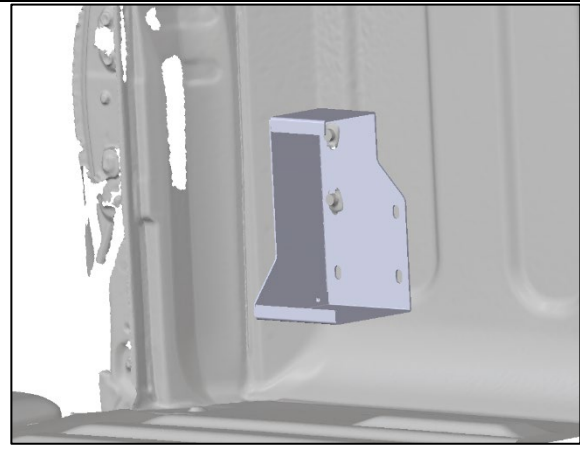
STEP 2A.3 INSTALL THE CHARGER ON TO THE 4 X CAPTIVE NUTS THAT ALIGN. (M4 SCREWS NOT INCLUDED)
THE STANDARD HOLE POSITINS ALLOW FOR THE TJM/PROJECTA 25A, REDARC CLASSIC BCDC1225/1240 AND THE ALPHA 50.

2B. JACK RELOCATION BRACKET



STEP 2B.1 INSTALL THE JACK INTO THE JBA JACK RELOCATION BRACKET AS SHOWN.

NOTE- THE TYRE BRACE KIT CAN BE SLID UP UNDER THE SECOND ROW SEAT (WHEN THE BASE OF THE SEAT IS FOLDED UP, SLIDE UP TO SIT BEHIND THE BACK OF THE SEAT BEHIND THE RAIL)



STEP 2B.2 IF THE VEHICLE HAS A TUB, THE BRACKET CAN BE LOCATED BY REMOVING THE TIE DOWN BOLTS IN THE REAR CORNER AND BOLTING THE JACK BRACKET INTO THE CAPTIVE LOCATIONS. IF THE VEHICLE DOES NOT HAVE A TUB, THE BRACKET CAN BE USED A UNIVERSAL BRACKET TO BE INSTALLED IN AN APPROPRIATE LOCATION CHOSEN (FASTENERS NOT SUPPLIED)