

PRODUCT- REAR TAILGATE LED LIGHT

VEHICLE- FORD NEXT GEN EVEREST 2022+

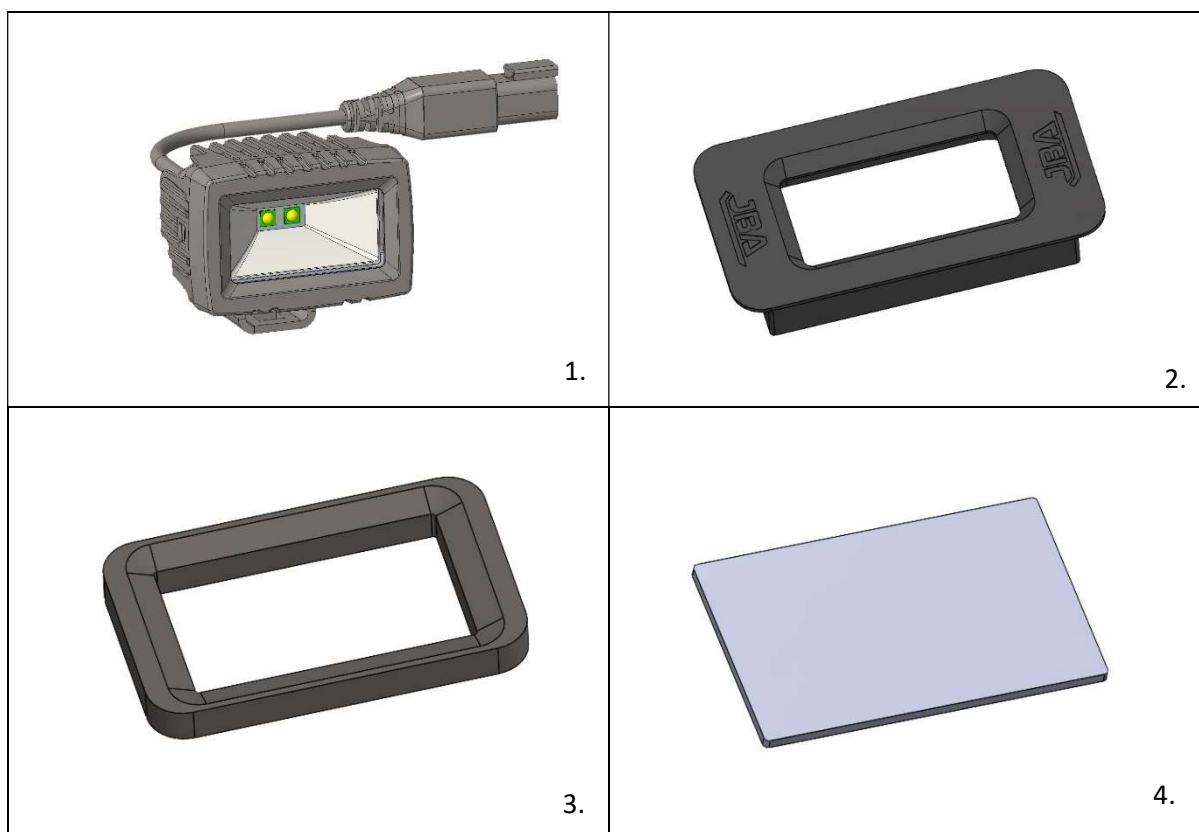
PART NUMBER- JBA-LB806W/D, JBA-LB806WKIT1, JBA-LB806DKIT1

ESTIMATED FIT TIME

- FITMENT OF LED LIGHT 90-120 MINS
- ELECTRICAL WIRING AND FITMENT OF SWITCHES 30-45MINS

IMPORTANT NOTES

- READ INSTRUCTIONS CAREFULLY PRIOR TO FITMENT
- SET ALL REMOVED PARTS ASIDE ON A SOFT CLEAN SURFACE FOR RE-INSTALLATION
- ENSURE THAT ALL TRIM CLIPS ARE REMOVED FROM THE VEHICLE WHEN PULLING PANELS OUT AND RE-INSERTED BACK INTO THE PANELS BEFORE RE-INSTALLATION



KIT CONTENTS

ITEM	DESCRIPTION	PART NO.	QTY
1	JBA NG EVEREST REAR TAILGATE LIGHT	10-LB806W/D	1
2	JBA NG EVEREST REAR TAILGATE LIGHT FASCIA	10-LB806A	1
3	JBA NG EVEREST REAR TAILGATE LIGHT REAR RETAINER	10-LB806B	1
4	JBA NG EVEREST CUTTING TEMPLATE	10-LB806C	1

1. PREPARING THE VEHICLE



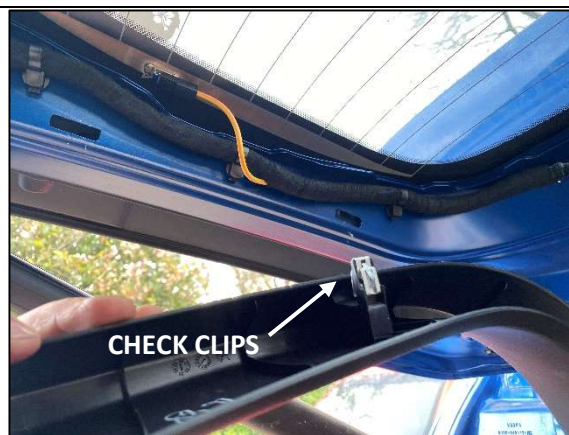
STEP 1.1 START AT THE FRONT OF THE TAILGATE AND BEGIN REMOVING THE CENTRE SECTION. START WITH THE OUTER CORNERS AND CAREFULLY START POPPING THE TRIM CLIPS.



STEP 1.2 WORK YOUR WAY ALONG TO COMPLETELY REMOVE THE PANEL AS SHOWN. CHECK FOR ANY TRIM CLIPS THAT HAVE STAYED IN THE VEHICLE, REMOVE AND CLIP BACK INTO THE PANEL FOR LATER.



STEP 1.3 START AT REMOVING BOTH SIDE PANELS NEXT. AS SHOWN IN STEP 1.4, THE CLIPS FACE TO THE OUTSIDE OF THE CAR SO YOU WILL NEED TO PULL TOWARDS THE CENTRE NOT DOWN.



STEP 1.4 CHECK THE CLIPS HAVE STAYED ON THE PANEL AND NOT IN THE VEHICLE SIDE. IF THEY HAVE POPPED OFF, GENTLY SQUEEZE AND PULL OUT (BE CAREFUL TO NOT PUSH THEM INTO THE HOLE) AND REFIT TO THE PLASTIC TRIM.



STEP 1.5 MOVE TO THE BACK OF THE DOOR TRIM AND REMOVE CENTRE TRIM COVER USING TRIM TOOL AS SHOWN.



STEP 1.6 SEPARATE THE HANDLE COVER AND REMOVE.



STEP 1.7 REMOVE THE 2 X SCREWS EXPOSED IN THE PANEL AND KEEP ASIDE.



STEP 1.8 USING A TRIM TOOL, CREATE A GAP TO GET YOUR FINGERS IN AND START PULL DOWN THE REAR DOOR TRIM. START IN THE CORNER AND CAREFULLY WORK YOUR WAY AROUND.

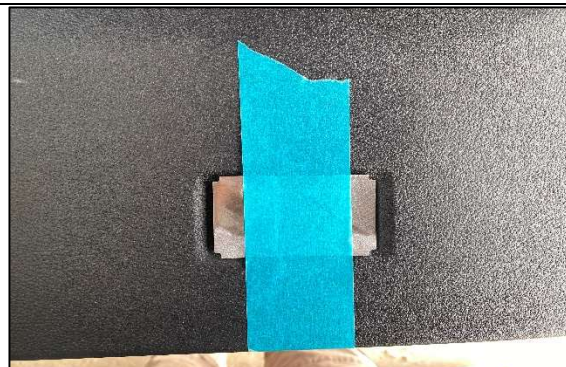


STEP 1.9 WHEN YOU HAVE ACCESS TO THE LIGHT SIDE, UNCLIP THE FORD WIRING AS SHOWN. ONCE ALL TRIM CLIPS ARE POPPED OFF, GENTLY LOWER THE REAR DOOR TRIM DOWN AND PLACE ON A CLEAN, SORT WORK BENCH. CHECK THE REAR DOOR FOR ANY TRIM CLIPS LEFT BEHIND, REMOVE AND REFIT TO PLASTIC TRIM.

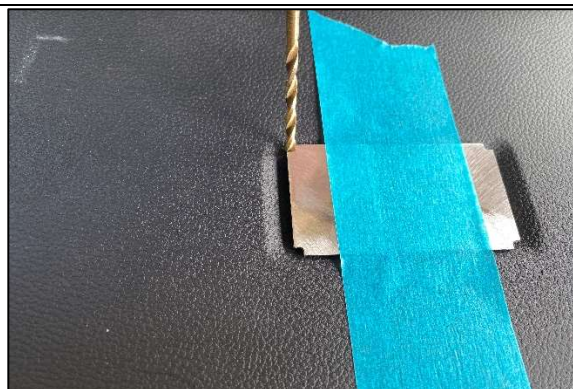
2. PREPARING THE REAR DOOR PANEL AND INSTALLING THE LIGHT



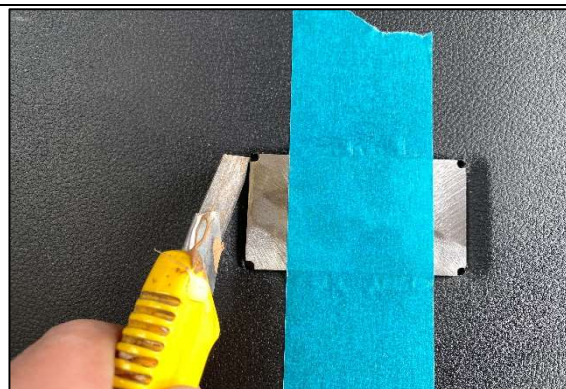
STEP 2.1 REMOVE THE FORD LIGHT BE SQUEEZING EITHER SIDE AND PUSHING THROUGH.



STEP 2.2 FLIP THE PANEL OVER AND PLACE THE CUTTING TEMPLATE IN THE CENTRE OF THE SECTION AS SHOWN. TAKE YOUR TIME TO ENSURE THIS TEMPLATE IS CENTRALISED WITH EQUAL DISTANCES BOTH SIDES AS THIS IS CRITICAL TO THE INSTALL.



STEP 2.3 USING A 3MM PILOT HOLE DRILL BIT, DRILL OUT EACH CORNER OF THE TEMPLATE AS SHOWN. IT IS IMPORTANT TO NOTE IN THE FOLLOWING STEPS, THE MINIMAL AMOUNT OF CUTTING IS DONE. IT IS BETTER TO CUT A LITTLE LESS AND TRIM WHERE REQUIRED IN STEP 2.6 TO BE SURE.



STEP 2.4 IT IS RECOMMENDED TO USE A KNIFE OR SCRIBE TO NOW TRACE AROUND THE TEMPLATE. CREATING A THIN LINE IS IMPORTANT. IF A THICK TEXTA IS USED, THE CUT OUT MAY BE TOO LARGE LATER. YOU NEED TO ENSURE THE MINIMUM AMOUNT OF TRIM IS CUT OUT.



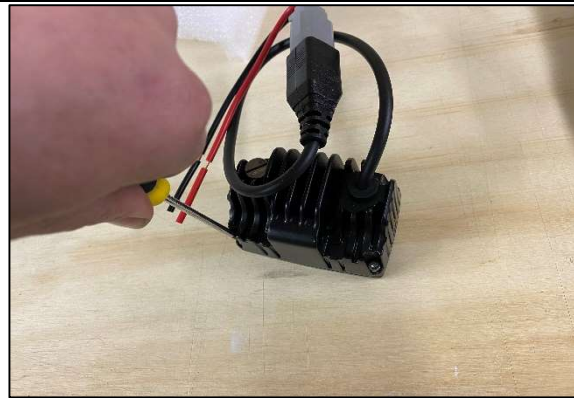
STEP 2.5 IF YOU HAVE A TRIM TOOL (OTHERWISE A KNIFE IF FINE BUT BE CAREFUL AND PATIENT), USE IT TO CUT OUT THE TRACED AREA. BE VERY CAREFUL IN THE CORNERS TO NOT RUN PAST THE CORNER AS IT MAY BE SEEN LATER ONCE THE LIGHT INSTALLED.



STEP 2.6 CLEAN/FILE ALL EDGES FROM THE CUT AND PRESS IN THE 10-LB806A FASCIA AS SHOWN. TRIM ANY EDGES OF THE PANEL IF REQUIRED TO GET A NICE FIT.



STEP 2.7 FLIP THE PANEL BACK OVER AND FIT THE 10-LB806B REAR RETAINER AND TRIM THE REAR DOOR FOAM AROUND THE LIGHT AS SHOWN.



STEP 2.8 TO PREPARE THE LIGHT, REMOVE 4 X 2.5MM ALLEN KEY SCREWS FROM THE REAR OF THE LIGHT.



STEP 2.9 SEPARATE THE FRONT FASCIA AND DISCARD (KEEP THE SCREWS).



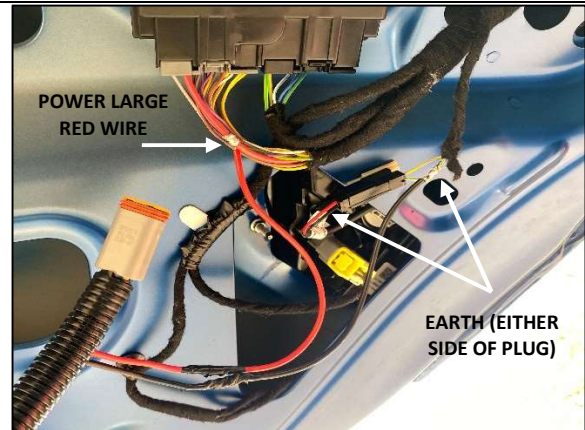
STEP 2.10 FIT THE LIGHT TO THE FASCIA IN THE ORIENTATION SHOWN AND RE-INSTALL 4 X 2.5MM ALLEN KEY SCREWS FROM THE REAR OF THE LIGHT.

3. WIRING THE LIGHT

ENSURE THAT AN INLINE FUSE RATED TO 5 AMPS IS INSTALLED, ONCE WIRED UP TAPE ALL CONNECTIONS AND CABLE TIE NEATLY



STEP 3.1 CONSTANT POWER CAN BE PICKED UP FROM THE REAR TAILGATE MODULE, CUT BACK THE CLOTH TAPE AROUND THE LOOM 5-6CM AS SHOWN TO MAKER IT EASIER TO WIRE IN.

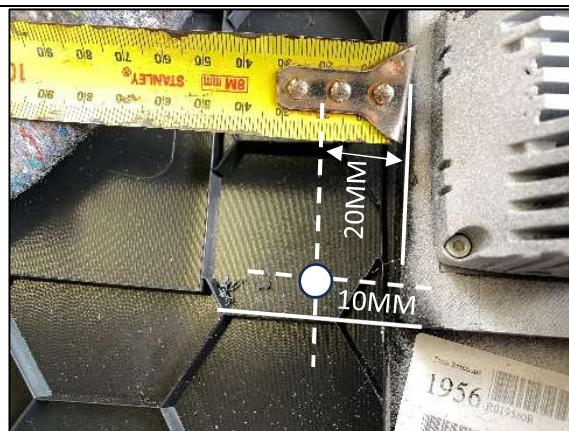


STEP 3.2 POWER IS TAPPED INTO THE LARGE RED WIRE IN THE TAILGATE MODULE AS SHOWN. EARTH CAN BE PICKED UP FROM THE SMALL PLUG NEXT TO THE MODULE ON EITHER SIDE OF THE PLUG. IF PICKING UP ON THE RIGHT SIDE AS SHOWN USE THE WHITE WITH GREEN TRACE (IN LINE WITH BLACK ON LHS OF PLUG)

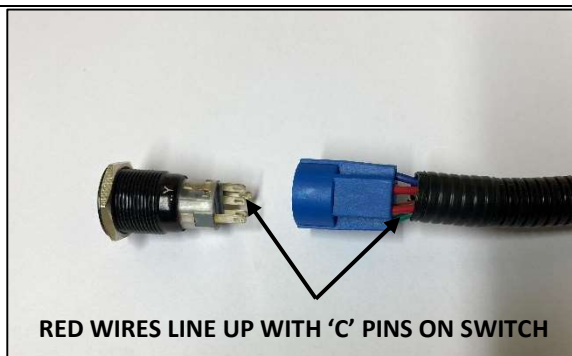
3.1 ADDITIONAL STEPS REQUIRED ONLY IF FITTING OPTIONAL 19MM JBA SWITCH



STEP 3.1.1 THE APPROX POSITION OF THE SWITCH IS SHOWN. TO PREPARE THE AREA FOR DRILLING, TRIM THE FOAM AROUND THE AREA AND TRIM DOWN THE RIDGES IN THE PANEL AS SHOWN.



STEP 3.1.2 MARK THE CENTRE OF THE HOLE USING THE FOLLOWING MEASUREMENTS. 20MM FROM THE FACE OF THE REAR RETAINER AND 10MM IN FROM THE SIDE EDGE AS SHOWN. DRILL THE HOLE OUT TO 20MM.

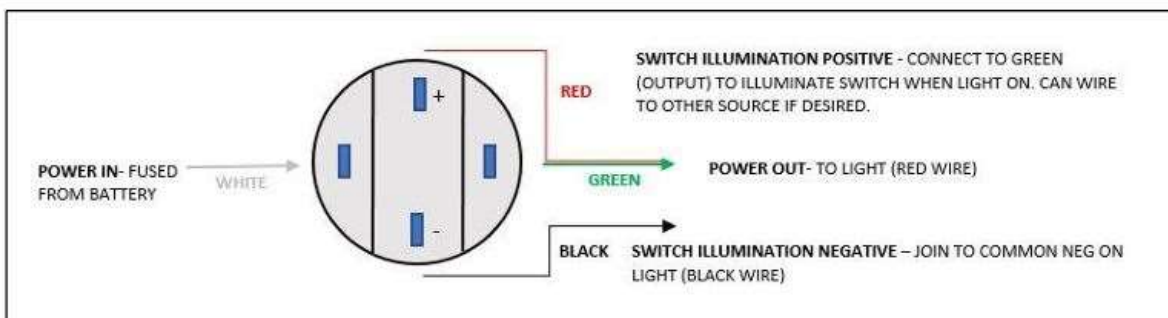


RED WIRES LINE UP WITH 'C' PINS ON SWITCH

STEP 3.1.3 IF FITTING THE JBA DUAL AMBER/WHITE SWITCH AND HARNESS, WHEN CONNECTING THE HARNESS TO THE SWITCH LATER, ENSURE TO LINE UP THE SWITCH WITH THE 'C' PINS (LOCATED ON THE GREY FACE OF THE SWITCH AT THE BOTTOM OF THE PINS) INTO THE PINS WITH RED WIRES IN THE HARNESS.

STEP 3.1.4 IF FITTING THE JBA WHITE ONLY SWITCH, REFER TO THE BELOW DIAGRAM FOR WIRING.

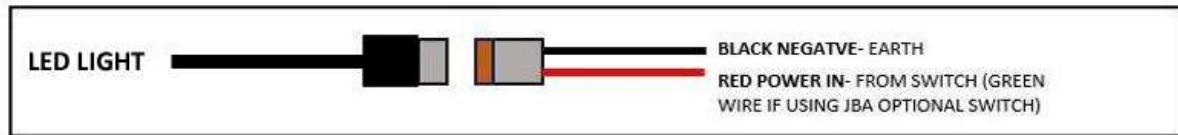
3.1.4 WIRING DIAGRAM FOR 19MM PUSH BUTTON WHITE ONLY LED



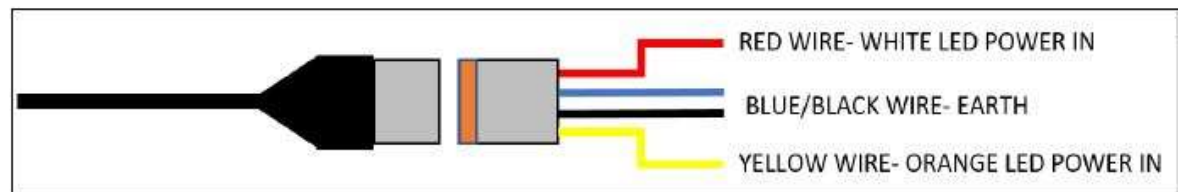
* NOTE- BLUE WIRE NOT USED/CONNECTED

3.2 GENERIC WIRING DIAGRAMS FOR NON JBA OPTIONAL SWITCHES

3.2.1 WHITE ONLY



3.2.2 DUAL/AMBER WHITE



4. FINAL STEPS



STEP 4.1 BRING THE REAR TRIM BACK UP THE VEHICLE AND CONNECT POWER PLUG AND OPTIONAL SWITCHES (IF FITTED). TEST THE LIGHT TO ENSURE EVERYTHING IS WORKING THEN RE-INSTALL REAR TAILGATE PANELS REFERRING TO STEPS 1.1-1.8.



STEP 4.2 WIPE DOWN ALL PANELS AND COMPLETE INSTALL.