

**PRODUCT-** JBA FLUSH MOUNT COMPRESSOR HOUSING

**PART NUMBER-** JB-CB102

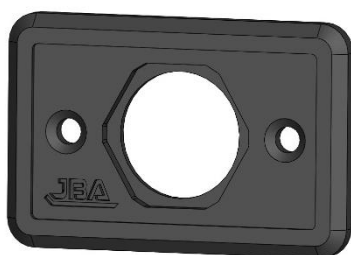
**ESTIMATED FIT TIME-** 30 MINS

### IMPORTANT NOTES

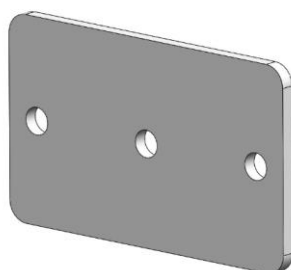
- READ INSTRUCTIONS CAREFULLY PRIOR TO FITMENT
- ENSURE 567 THREAD SEALANT IS APPLIED TO ALL CONNECTIONS
- TJM NITTO FITTING NOT INCLUDED (PURCHASED SEPERATLEY FROM TJM P/N 013COMPAKN)

### SPECIALISED TOOLS REQUIRED FOR FITMENT

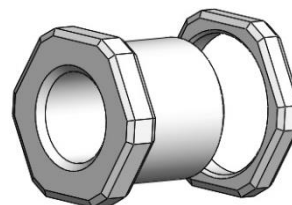
- 30MM OR 32MM OR 1/1/4" HOLE SAW (METAL OR WOOD APPLICATION)
- 30MM OR 32MM OR 1/1/4" SPADE BIT (WOOD APPLICATION)
- 30MM OR 32MM STEP DRILL BIT (METAL APPLICATION)
- RAT TAIL FILE



1



2



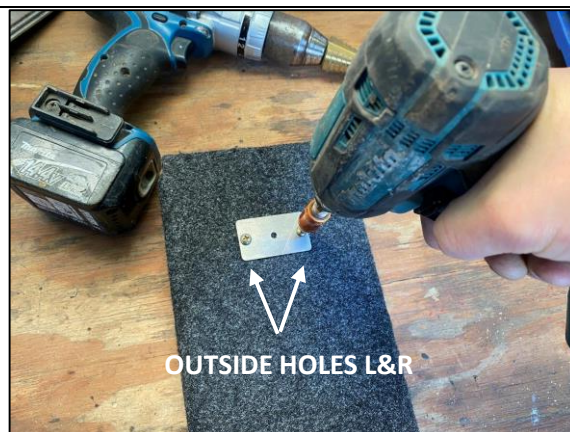
3

### KIT CONTENTS

ITEM	DESCRIPTION	PART NO.	QTY
1	JBA FLUSH MOUNT COMPRESSOR FASCIA	10-CB102A	1
2	JBA COMPRESSOR MOUNT DRILLING TEMPLATE	10-CB102C	1
3	JBA BULKHEAD FITTING AND NUT	JBA-CB103	1
4	M4 X 16 STAINLESS STEEL CSK SCREW (1-6MM MATERIAL)	X37 0416CP304	2
5	M4 X 30 STAINLESS STEEL CSK SCREW (7-20MM MATERIAL)	X37 0430CP304	2
6	M4 STAINLESS NYLOC NUT	X53 04304	2
7	M4 X 9.0 X 0.8MM STAINLESS FLAT WASHER	X80 04090.8304	2
8	6G X 12MM PAN HEAD SELF DRILLING SCREW	040.030.0047	2



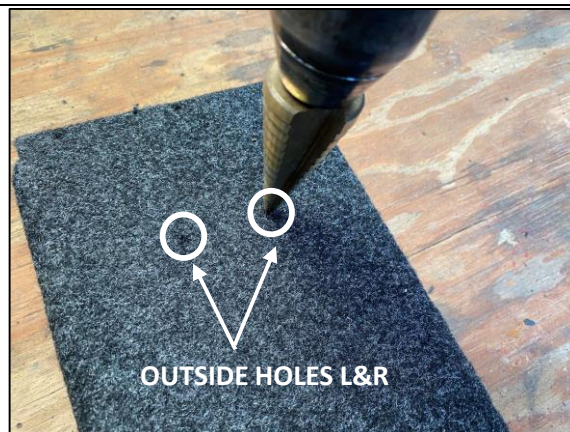
**STEP 1** IDENTIFY THE LOCATION FOR THE AIR OUTLET AND MARK WITH TEXTA/SCRIBE. POSITION THE CENTRE HOLE OF THE DRILLING TEMPLATE OVER PREVIOUSLY MARKED POINT.



**STEP 2** TEMPORARILY INSTALL THE DRILLING TEMPLATE USING 2 X 6G X 12MM SELF DRILLING SCREWS SUPPLIED (OUTSIDE HOLES L&R).



**STEP 3** DRILL CENTRE HOLE USING 3-4MM PILOT HOLE.



**STEP 4** REMOVE THE DRILLING TEMPLATE AND ENLARGE OUTER HOLES (L&R) TO 5MM.



**STEP 5** ENLARGE CENTRE HOLE TO 30-32MM (1-1/4") USING THE MOST APPROPRIATE DRILL BIT FOR THE APPLICATION (SPADE BIT FOR WOOD, STEP DRILL FOR SHEET METAL OR APPROPRIATE HOLE SAW).



**STEP 6** CLEAN CENTRE HOLE DEBURRING ANY SHARP EDGES USING RAT TAIL FILE. COUNTERSINK OUTER 5MM HOLES.



**STEP 7** CLEAR OUT ANY SWARF FROM BEHIND CARPET (IF APPLICABLE).



**STEP 8** APPLY 567 LOCTITE TO TJM NITTO FITTING (NOT SUPPLIED IN THIS KIT) AND INSTALL TO JBA-CB103 BULK HEAD. THIS WILL BECOME TIGHT TOWARDS THE END AS THE TWO THREADS ARE TAPERED, ENSURE 2 PARTS ARE FULLY TIGHTENED ALL THE WAY.



**STEP 9** FEED THE BULKHEAD (JBA-CB103) THROUGH THE FRONT OF THE FASCIA (JBA-CB102A) AND APPLY 567 THREAD SEALANT OR LOCTITE AS SHOWN FROM BEHIND.



**STEP 10** FASTEN STAINLESS NUT FROM BEHIND AND FULLY TIGHTEN. ENSURE THE FRONT OF THE BULKHEAD IS ALIGNED AND SEATED PROPERLY.



**STEP 11** INSTALL FASCIA ON TO DRAWER FRONT USING M6 CSK SCREWS ON THE L&R OUTER HOLES. ENSURE WASHERS AND NYLOC NUT ARE INSTALLED FROM BEHIND.



**STEP 12** INSTALL ANY ELBOWS OR HOSES BEING FITTED FROM REAR APPLYING 567 THREAD SEALANT. CLEAN ANY SWARF, CHECK FOR AIR LEAKS AND RE-INSTALL DRAWER FRONT.