

PRODUCT- TJM SINGLE/TWIN COMPRESSOR MOUNTING BRACKET

VEHICLE- GU PATROL WAGON 2005+

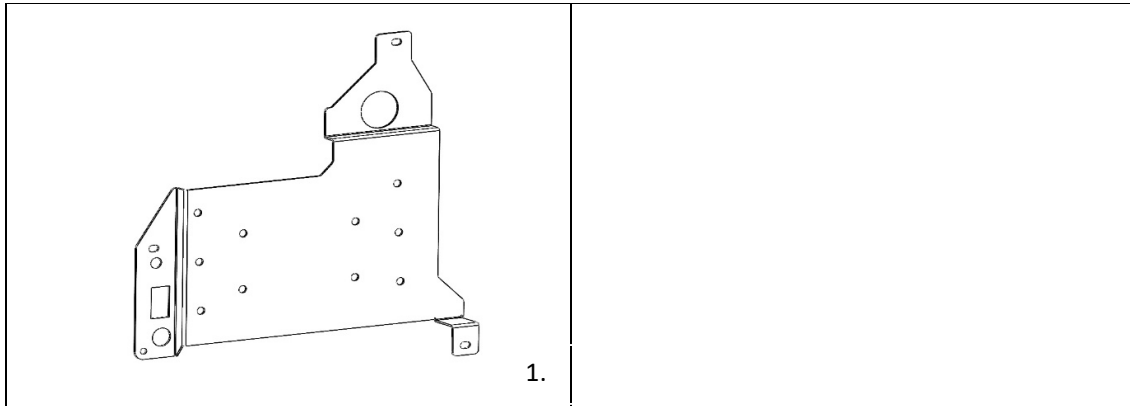
PART NUMBER- JBA-CB232, JBA-CB232KIT2, KIT3, KIT4, KIT5

ESTIMATED FIT TIME

- | | |
|--|------------|
| - REMOVAL AND REFITMENT OF SEAT AND INTERIOR PANELS | 60 MINS |
| - REMOVAL OF DRAWER SYSTEM (IF REQUIRED) | 60-90 MINS |
| - PREPERATION AND MOUNTING OF COMPRESSOR AND BRACKET | 60 MINS |
| - ELECTRICAL WIRING AND PLUMBING OF AIR OUTLETS | 90-120MINS |

IMPORTANT NOTES

- READ INSTRUCTIONS CAREFULLY PRIOR TO FITMENT
- ENSURE 567 THREAD SEALANT IS APPLIED TO ALL AIR THREADS INSTALLED
- RETAIN ALL SCREWS, CLIPS AND PANELS DURING REMOVAL FOR RE-FITMENT AFTER COMPRESSOR INSTALLATION. STORE IN A SOFT, CLEAN LOCATION TO ENSURE NO DAMAGE TO PANELS.
- REFER TO TJM COMPRESSOR INSTALLATION INSTRUCTIONS FOR WIRING SPECIFICATIONS



KIT CONTENTS

ITEM	DESCRIPTION	PART NO.	QTY
1	GU PATROL SINGLE/TWIN COMPRESSOR BRACKET	10-CB232	1
2	M6 x 20MM SEMS ASSMEMBLY Z/Y	B48 0620ZY	4
3	M6 HEX FLANGE NUT ZY	N24 06ZY	1
4	M8 X 16MM BUTTON HEAD SOCKET SCREW GR 304 S/S	X72 08016304	6
5	5/16 X 3/4 X 18G FLAT WASHER GR 304 S/S	X79 082018G304	12
6	M8 NYLON INSERT LOCK NUT GR 304S/S	X53 8304	6

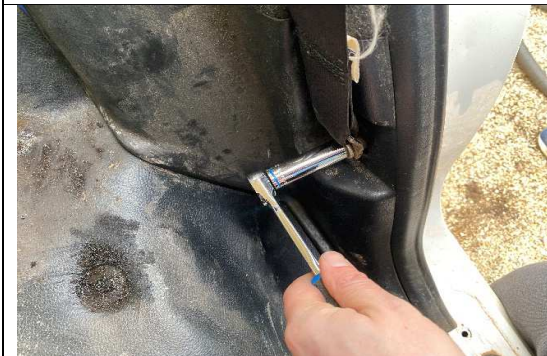
1. PREPARING THE VEHICLE



STEP 1.1 START AT THE REAR PASSENGER SIDE DOOR AND FOLD THE PASSENGER SECOND ROW OF SEATS FORWARD AS SHOWN.



STEP 1.2 REMOVE PLASTIC TRIM LEVERING UP FROM BODY CLIPS AS SHOWN. (CHECK FOR TRIM CLIPS IN VEHICLE)



STEP 1.3 REMOVE THE SECOND ROW SEAT BELT USING 14MM SOCKET.



STEP 1.4 MOVE TO REAR OF THE VEHICLE AND REMOVE TRIM COVER AT THE BOTTOM OF THE PASSENGER SIDE WINDOW. THE TRIM PULLS FORWARD AND UP. LEAVE THE BLACK BODY CLIP IN THE CAR HALF WAY INSTALLED FOR EASY RE-INSTALL LATER.



STEP 1.5 PULL THE TRIM AROUND THE REAR SEAT BELT OUT AS SHOWN.



STEP 1.6 REMOVE TOP TRIM CLIP IN TOP CORNER AS SHOWN.



STEP 1.7 REMOVE THE GRAB HANDLE AND KEEP ASSEMBLY SET ASIDE. FOR 5 SEAT MODELS REMOVE TRIM PLUGS.



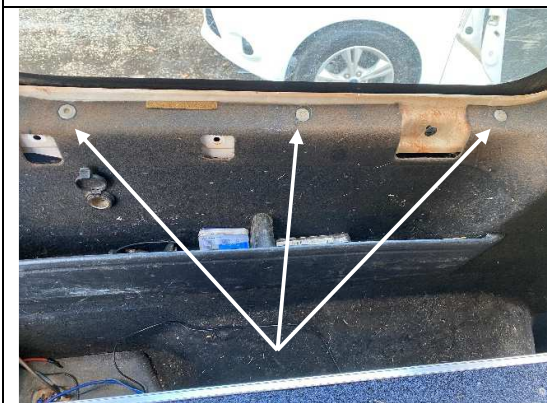
STEP 1.8 REMOVE REAR TRIM PANEL COMPLETELY AS SHOWN.



STEP 1.9 REFERENCE PICS FOR TRIM CLIP (EXAMPLE ONLY). AS YOU ARE REMOVING PANELS, KEEP NOTICE OF ANY CLIPS THAT HAVE REMAINED IN THE VEHICLE. USE A TRIM CLIP REMOVER TO POP OUT OF THE VEHICLE AS SHOWN.



STEP 1.10 RE-INSERT INTO THE PLASTIC TRIM PANEL LOCATION. THEY WILL NORMALLY SLIDE IN AND POP INTO POSITION. THESE STEPS WILL ENSURE AN EASIER RE-INSTALLATION OF THE PANELS LATER.



STEP 1.11 REMOVE 3 X RETAINING CLIPS FROM UNDER WINDOW. THE CENTRE PUSHES DOWN AND THE OUTSIDE WILL PULL UP.



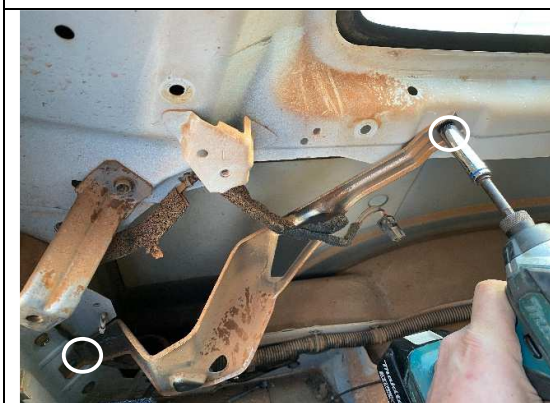
STEP 1.12 MOVE TO THE SECOND ROW SEAT AND UNCLIP PLASTIC TRIM FROM BEHIND AS SHOWN.



STEP 1.13 PULL THE PANEL BACK AND UN PLUG THE 12V SOCKET.



STEP 1.14 FULLY REMOVE THE PANEL FROM THE VEHICLE AND SET ASIDE IN A SAFE PLACE TO ENSURE NO DAMAGE TO THE PANEL.



STEP 1.15 REMOVE THE STEEL PLATE USING 10MM SOCKET X 2 AND DISCARD AS NO LONGER REQUIRED.



STEP 1.16 IF FITTING A TANK REMOVE THE FORWARD POSITION STEEL PLATE USING 10MM SOCKET X 2. IF NOT FITTING A TANK LEAVE THIS PLATE INSTALLED.

2.1 PREPARING THE COMPRESSOR- SINGLE COMPRESSOR



STEP 2.1.1 ROTATE THE COMPRESSOR 90 DEGREES ENSURING THE POWER WIRES ARE AT THE BOTTOM OF THE COMPRESSOR AS SHOWN.



STEP 2.1.2 MOUNT COMPRESSOR TO BRACKET IN ORIENTATION AS SHOWN USING M8 X 16 BOLT WITH WASHER UNDER HEAD. **ENSURE THE BOLT HEADS ARE MOUNTED FROM THE FACE OF THE BRACKET AS SHOWN.**



STEP 2.1.3 FASTEN AT REAR OF BRACKET USING WASHER AND NYLOC NUT AS SHOWN. INSTALL TJM PRESSURE SWITCH.



STEP 2.1.4 IF FITTING OPTIONAL JBA HOSES AND ELBOWS, INSTALL AS SHOWN.

2.2 PREPARING THE COMPRESSOR- TWIN COMPRESSOR



STEP 2.2.1 MOUNT COMPRESSOR TO BRACKET IN ORIENTATION AS SHOWN USING M8 X 16 BOLT WITH WASHER UNDER HEAD. **ENSURE THE BOLT HEADS ARE MOUNTED FROM THE FACE OF THE BRACKET AS SHOWN.**

INSTALLING THE BRACKET AND COMPRESSOR INTO THE VEHICLE



STEP 3.1 LIFT THE BRACKET INTO PLACE AS SHOWN AND INSTALL 3 X M6 X 20 SEMS INTO CAPTIVE NUT POSITIONS.



STEP 3.2 MARK AND DRILL BOTTOM LEFT MOUNTING POSITION AND FASTEN USING M6 X 20 SEMS AND M6 FLANGE NUT.



STEP 3.3 FEED THE POWER SOCKET POWER WIRE THROUGH THE TOP HOLE IN THE BRACKET IN PREPERATION FOR PANEL RE-ASSEMBLY.



STEP 3.4 COMPLETE WIRING POWER AS PER TJM INSTRUCTIONS. TEST COMPRESSOR AND CHECK FOR ANY LEAKS. RE-ASSEMBLE VEHICLE AND WIPE DOWN.