

PRODUCT- TJM TWIN COMPRESSOR MOUNTING BRACKET

VEHICLE- 200 SERIES LANDCRUISER 2007+

PART NUMBER- JBA-CB211, JBA-CB211KIT1, KIT2, KIT3, KIT4, KIT5

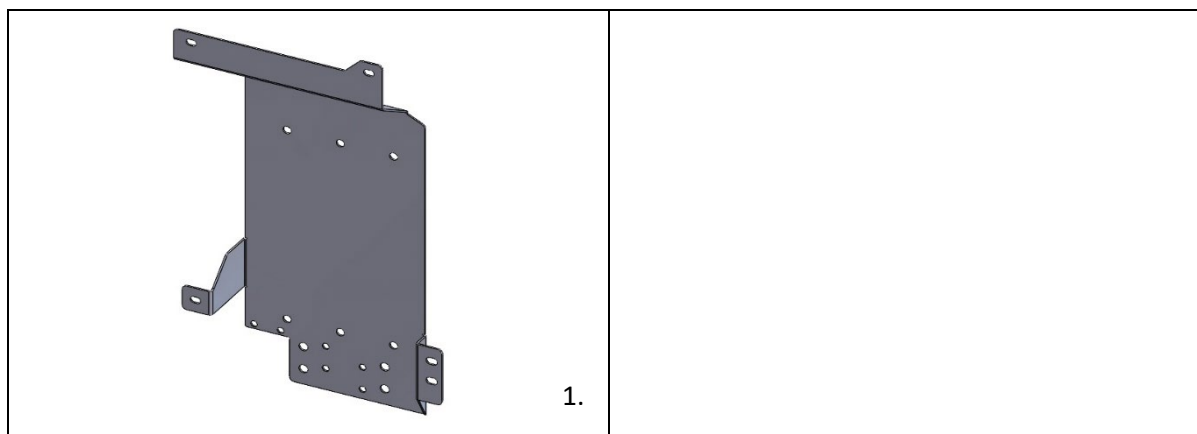
ESTIMATED FIT TIME

- | | |
|--|------------|
| - REMOVAL AND REFITMENT OF SEAT AND INTERIOR PANELS | 60 MINS |
| - REMOVAL OF DRAWER SYSTEM (IF REQUIRED) | 60-90 MINS |
| - PREPERATION AND MOUNTING OF COMPRESSOR AND BRACKET | 60 MINS |
| - ELECTRICAL WIRING AND PLUMBING OF AIR OUTLETS | 90-120MINS |

IMPORTANT NOTES

- READ INSTRUCTIONS CAREFULLY PRIOR TO FITMENT
- ENSURE 567 THREAD SEALANT IS APPLIED TO ALL AIR THREADS INSTALLED
- ENSURE THAT ALL TRIM CLIPS ARE REMOVED FROM THE VEHICLE WHEN REMOVING PANELS AND RE-INSERTED BACK INTO THE PANELS BEFORE RE-INSTALLATION (SEE STEPS 1.13-1.15).
- REFER TO TJM COMPRESSOR INSTALLATION INSTRUCTIONS FOR WIRING SPECIFICATIONS
- NITTO FITTING USED WITH KITS ARE SUPPLIED WITH TJM AIRLINE KIT (013COMPAKN) SUPPLIED SEPERATLEY (NOT BY JBA) AVAILABLE THROUGH TJM STORES

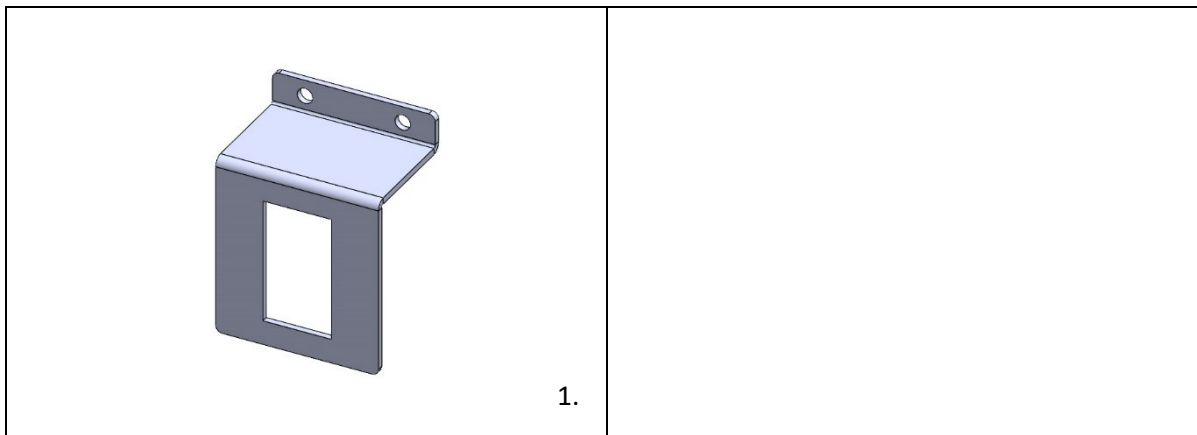
KIT CONTENTS



ITEM	DESCRIPTION	PART NO.	QTY
1	200 SERIES TWIN COMPRESSOR BRACKET	10-CB211A	1
2	M6 HEX SERR FLANGE NUT ZY	N24 06ZY	2
3	M6 x 20MM SEMS ASSMEMBLY Z/Y	B48 0620ZY	5
4	M8 X 16MM BUTTON HD SOCKET SCR GR 304 S/S	X72 08016304	6
5	5/16 X 3/4 X 18G FLAT WASHER GR 304 S/S	X79 082018G304	12
6	M8 NYLON INSERT LOCK NUT GR 304S/S	X53 8304	8
7	16MM2 6MM STUD FLARED ENTRY CABLE LUG	57124	4
8	20MM HEAT SHRINK RED 9MM	ACX1277	4

OPTIONAL KIT PARTS- JBA-CB211KIT1

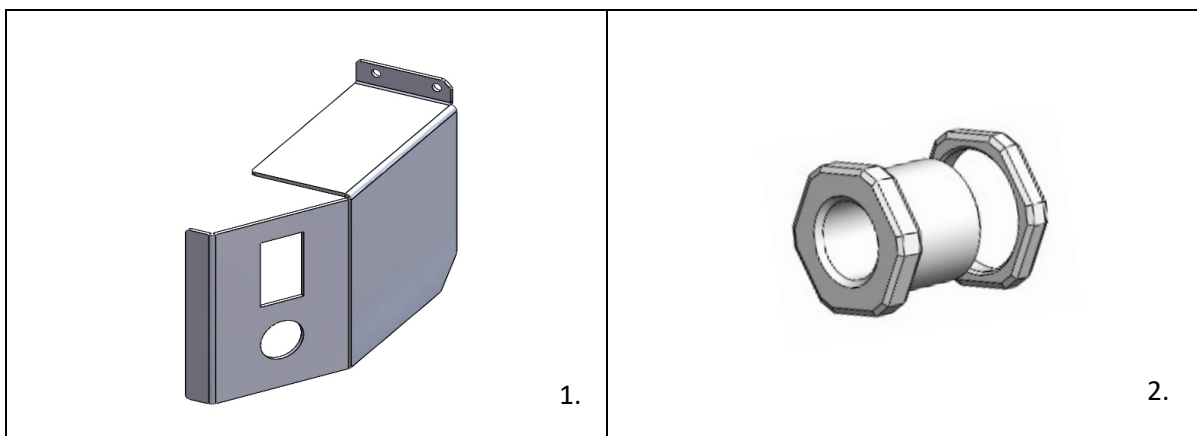
JBA-CB201S QUARTER PANEL SWITCH BRACKET



ITEM	DESCRIPTION	PART NO.	QTY
1	200 SERIES TWIN SWITCH BRACKET	10-CB211BS	1
2	M4 X 12 SEMS PAN Z/S	279199	2

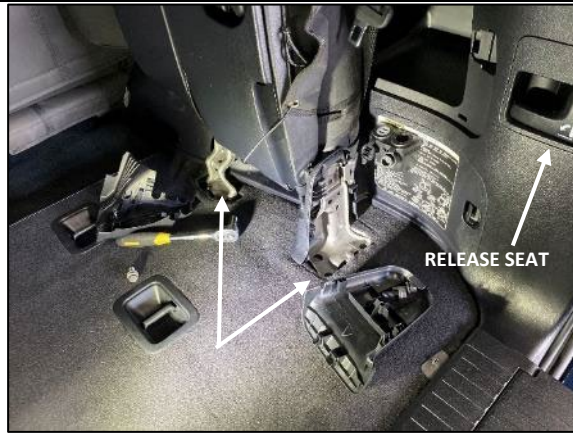
OPTIONAL KIT PARTS- JBA-CB211KIT2, KIT4

JBA-CB211QAS QUARTER PANEL AIR/SWITCH OUTLET BRACKET



ITEM	DESCRIPTION	PART NO.	QTY
1	200 SERIES SINGLE AIR/SWITCH BRACKET	10-CB211QAS	1
2	JBA COMPRESSOR BULK HEAD AND NUT	JBA-CB103	1
3	M4 X 12 SEMS PAN Z/S	279199	2

1. PREPARING THE VEHICLE



STEP 1.1 REMOVE THE FRONT AND REAR PLASTIC COVERS AND REMOVE CAPTIVE BOLTS USING 14MM SOCKET. RELEASE SEAT AND REMOVE FROM VEHICLE.



STEP 1.2 REMOVE REAR PLASTIC TRIM. LEVER FROM REAR OF PART AND PULL UP FROM EITHER LEFT OR RIGHT SIDE AND WORK ACROSS THE PART.



STEP 1.3 REMOVE REAR RETAINING PIN. PRESS THE CENTRE DOWN AND LEVER CLIP OUT.



STEP 1.4 REMOVE 3RD ROW SEAT BELT. REMOVE PLASTIC COVER ON SEAT BELT BOLT AND REMOVE BOLT USING 14MM.



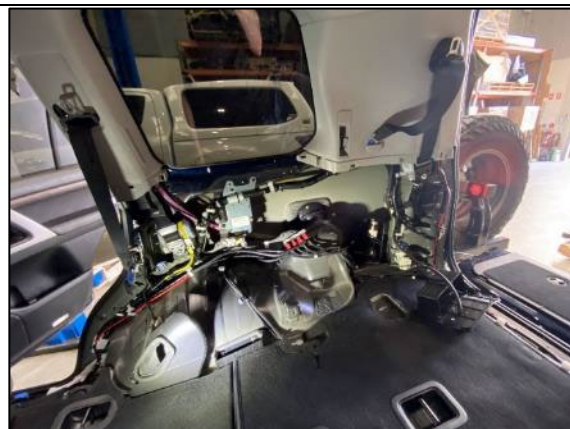
STEP 1.5 FOLD DOWN SECOND ROW OF SEATS AND REMOVE SEAT BELT BOLT USING SAME TECHNIQUE AS STEP 1.4.



STEP 1.6 REMOVE THE PLASTIC COVER USING A SMALL FLAT BLADE SCREWDRIVER EXPOSING 10MM BOLT. REMOVE BOLT AND COVER.



STEP 1.7 REMOVE TRIM PULLING UP FROM FRONT TO REAR.



STEP 1.8 REMOVE PANEL. START AT THE REAR OF THE VEHICLE PULLING AWAY THE RUBBER TRIM (BE CAREFUL OF THE BLACK GREASE). GENTLY POP CLIPS BY PULLING AND MOVE FROM FRONT TO REAR OF VEHICLE.



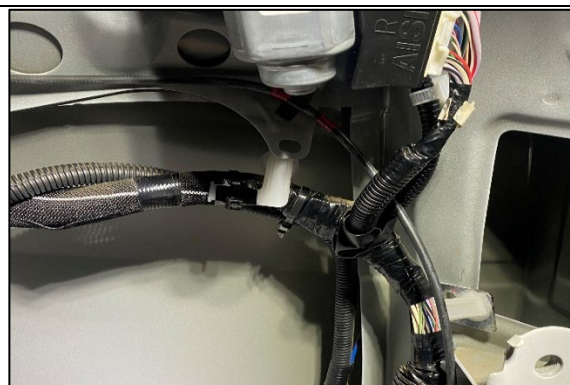
STEP 1.9 REMOVE QUARTER PANEL FROM VEHICLE AND PLACE ON A SOFT, CLEAN SURFACE. FROM THE REAR OF THE QUARTER PANEL, REMOVE THE STORAGE PANEL USING PHILLIPS HEAD DRIVER.



STEP 1.10 IF VEHICLE HAS STORAGE POCKET ON THE REAR OF THE BOTTOM REMOVABLE PANEL, REMOVE THE 5 X PLASTIC WELDS FROM THE REAR. A SMALL BLOW TORCH OR 12MM DRILL BIT CAN BE USED.



STEP 1.11 REMOVE X 2 PLASTIC LOOM RETAINERS. SQUEEZE FROM BEHIND (FROM SIDES NOT TOP/BOTTOM) AND PULL AT THE SAME TIME TO REMOVE.



STEP 1.12 THESE CLIPS CAN BE DIFFICULT TO GET OUT AND WONT BE USED LATER SO USE APPROPRIATE FORCE AS REQUIRED, JUST ENSURE STEEL BODY HOLES ARENT BENT.

REFERENCE PICS FOR TRIM CLIPS



STEP 1.13 REFERENCE PICS FOR TRIM CLIP (EXAMPLE ONLY). AS YOU ARE REMOVING PANELS, KEEP NOTICE OF ANY CLIPS THAT HAVE REMAINED IN THE VEHICLE- NORMALLY WHITE OR GREEN AS SHOWN.



STEP 1.14 USE A TRIM CLIP REMOVER TO POP OUT OF THE VEHICLE AS SHOWN.

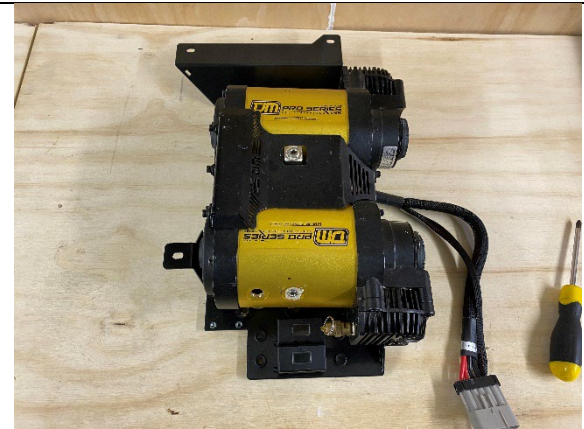


STEP 1.15 RE-INSERT INTO THE PLASTIC TRIM PANEL LOCATION. THEY WILL NORMALLY SLIDE IN AND POP INTO POSITION. THESE STEPS WILL ENSURE AN EASIER RE-INSTALLATION OF THE PANELS LATER.

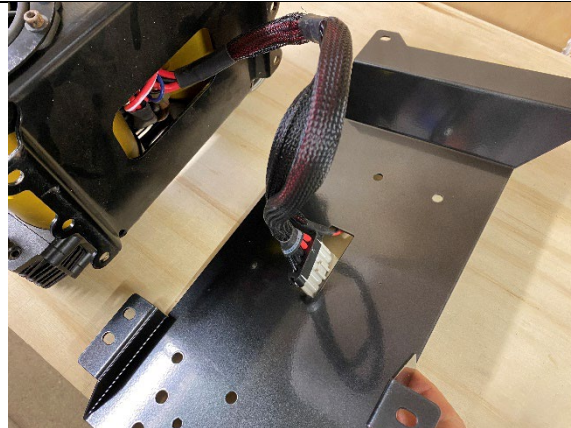
2. PREPARE THE FUSES AND COMPRESSOR



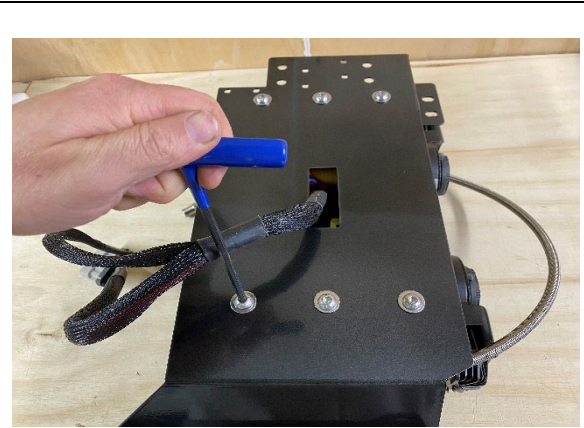
STEP 2.1 ATTACH ANS-H FUSE HOLDERS SUPPLIED IN TJM COMPRESSOR USING M4 X 12 STAINLESS PAN HEAD SCREWS AS SHOWN.



STEP 2.2 ORIENTATION OF COMPRESSOR (REFERNCE PIC ONLY).



STEP 2.3 FEED THE WIRING LOOM THROUGH THE BRACKET AS SHOWN.

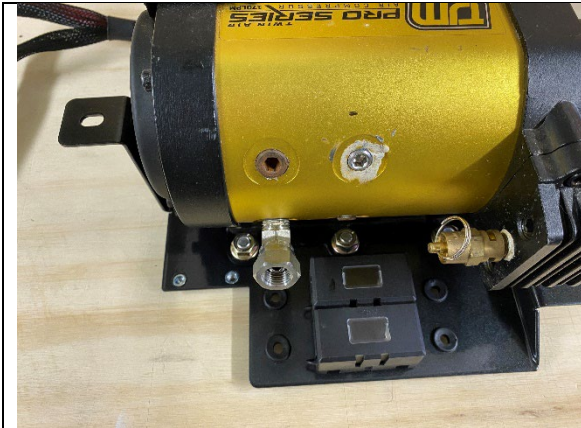


STEP 2.4 FLIP THE BRACKET OVER AND FASTEN THE COMPRESSOR USING M8 X 16 BUTTON HEAD WITH WASHER UNDER THE HEAD FROM REAR OF BRACKET AS SHOWN. FASTEN FROM COMPRESSOR SIDE USING M8 NYLOC NUT AND WASHER.

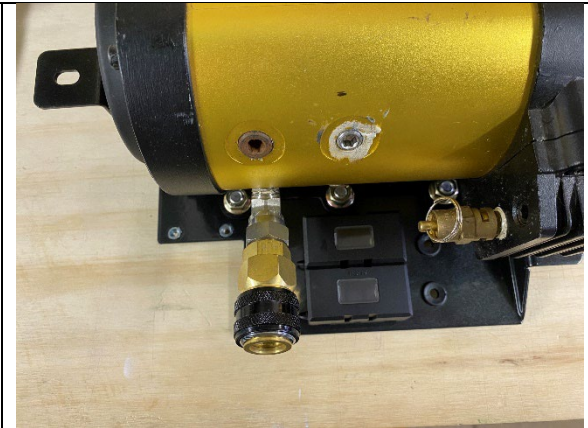
3. OPTIONAL STEPS- INSTALLING SWITCH AND AIR OUTLETS FOR COMPRESSOR

REFER TO KIT NUMBER YOU ARE INSTALLING AND USE RELEVANT STEPS REQUIRED

3.1 JBA KIT1 COMPRESSOR MOUNT AIR OUTLET AND SWITCH



STEP 3.1.1 REMOVE THE BOTTOM LEFT GRUB SCREW FROM THE TJM COMPRESSOR AND INSTALL JBA-CB105 45 DEGREE ELBOW AS SHOWN.



STEP 3.1.2 INSTALL NITTO FITTING FROM TJM COMPRESSOR AIRLINE KIT- 013COMPAKN (NOT SUPPLIED BY JBA)



STEP 3.1.3 INSTALL JBA-CB211BS SWITCH BRACKET USING M4 X 12 SEMS PAN ZINC SCREWS AS SHOWN.

3.2 JBA KIT2 AND KIT4 QUARTER PANEL MOUNT AIR OUTLET AND SWITCH



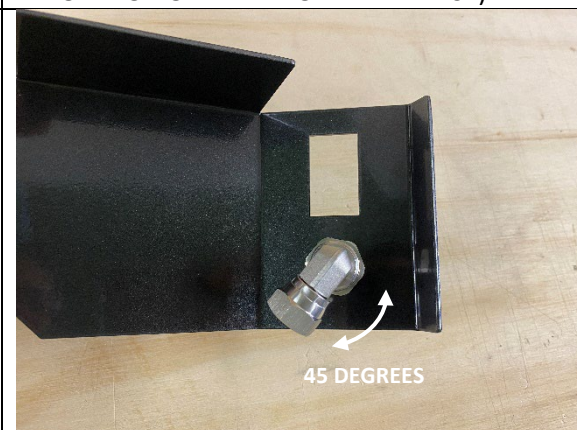
STEP 3.2.1 INSTALL JBA-CB106 90 DEGREE ELBOW TO TOP RIGHT 1/4" OUTLET AND FACE DOWN ON A 45 DEGREE ANGLE AS SHOWN.



STEP 3.2.2 INSTALL JBA-CB112 800MM HOSE AS SHOWN. (IF FITTING A TANK, HOSE WILL CURVE BACK ON ITSELF- REFER TO STEPS 3.4 BELOW FOR ORIENTATION REFERENCE)



STEP 3.2.3 INSTALL JBA-CB103 BULKHEAD TO JBA-CB211QAS. **ENSURE LOCTITE IS APPLIED TO NUT FROM BEHIND.** INSTALL NITTO FITTING.



STEP 3.2.4 INSTALL JBA-CB106 90 DEGREE ELBOW FROM REAR ON A 45 DEGREE ANGLE FACING DOWN AS SHOWN.



STEP 3.2.5 INSTALL JBA-CB211QAS SWITCH BRACKET USING M4 X 12 SEMS PAN HEAD SCREWS AS SHOWN.



STEP 3.2.6 IF NOT FITTING A TANK, JOIN HOSE FROM COMPRESSOR TO JBA-CB211QAS AS SHOWN.



STEP 3.2.7 WHEN CONNECTING 800MM HOSE, ENSURE THERE IS A GAP BETWEEN HOSE AND BRACKET AND ADJUST 90 DEGREE ELBOW AS REQUIRED.



STEP 3.2.8 IF FITTING A TANK, REFER TO STEPS 3.4 IN CONJUNCTION WITH JBA-CB301 INSTRUCTIONS.

3.3 JBA KIT3 AND KIT5 DRAWER FRONT MOUNT AIR OUTLET AND SWITCH



STEP 3.3.1 INSTALL JBA-CB106 90 DEGREE ELBOW TO TOP RIGHT ¼" OUTLET AND FACE DOWN ON A 45 DEGREE ANGLE AS SHOWN.



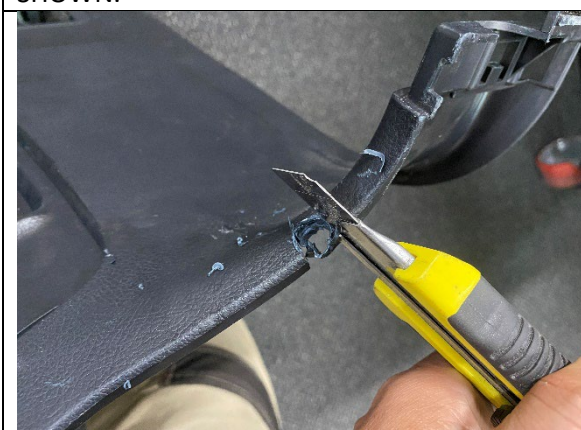
STEP 3.3.2 INSTALL JBA-CB112 800MM HOSE AS SHOWN. (IF FITTING A TANK, HOSE WILL CURVE BACK ON ITSELF- REFER TO STEPS 3.4 BELOW FOR ORIENTATION REFERENCE)



STEP 3.3.3 PREPARATION OF QUARTER PANEL MARK APPROX 70-80MM FROM END AS SHOWN.



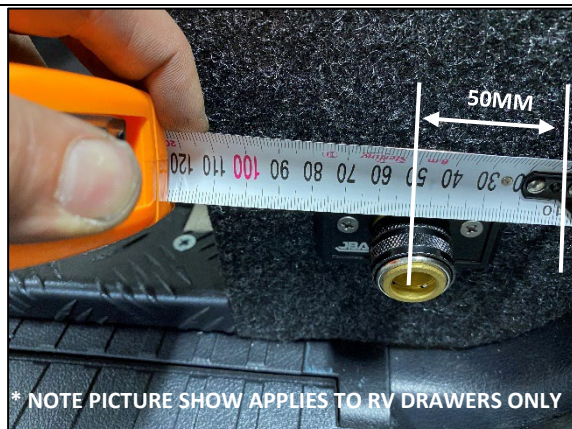
STEP 3.3.4 USING A STEP DRILL, DRILL A 12MM HOLE IN THE PANEL.



STEP 3.3.5 CLEAN UP THE HOLE USING A STANLEY KNIFE AS SHOWN.

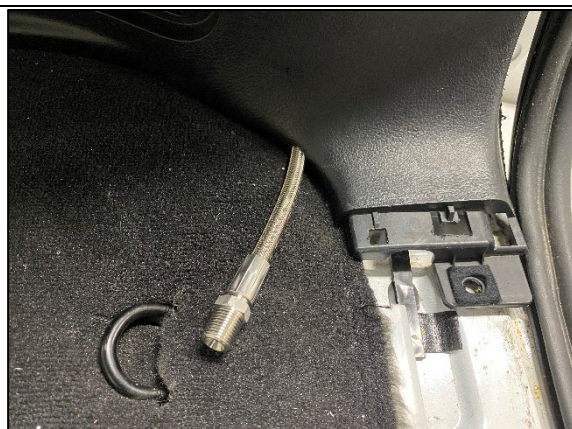


STEP 3.3.6 CLEAN UP AND SHAPE USING RAT TAIL FILE TO CLEAN EDGES AND SHAPE AS REQUIRED.



STEP 3.3.7 PREPERATION OF DRAWER FRONT
REFER TO JBA-CB101 DRAWER FRONT FASCIA INSTRUCTIONS AND JBA-CB901 SWITCH INSTRUCTIONS FOR SWITCH AND AIR OUTLET INSTALLATION.

BEFORE INSTALLING AIR OUTLET FASCIA TO DRAWER FRONT, CLOSE THE VEHICLE TAILGATE AND ENSURE THERE IS 30MM CLEARANCE BETWEEN THE DRAWERS AND TAILGATE FLAP FOR THE NITTO FITTING TO CLEAR.
IF FITTING RV STORAGE SOLUTIONS DRAWERS, THE FASCIA WILL NEED TO BE FITTED OFF CENTRE TO CLEAR THE REAR TAILGATE FLAP. IT IS SUGGESTED TO MEASURE 50MM FROM THE EDGE OF THE PANEL TO THE CENTRE OF THE DRILLING TEMPLATE AND 60-70MM UP FROM THE BOTTOM.



STEP 3.3.8 REFERENCE PICS ONCE COMPRESSOR AND REAR QUARTER PANEL ARE RE INSTALLED. FEED HOSE THROUGH NOTCH PREPARED IN ABOVE STEPS.



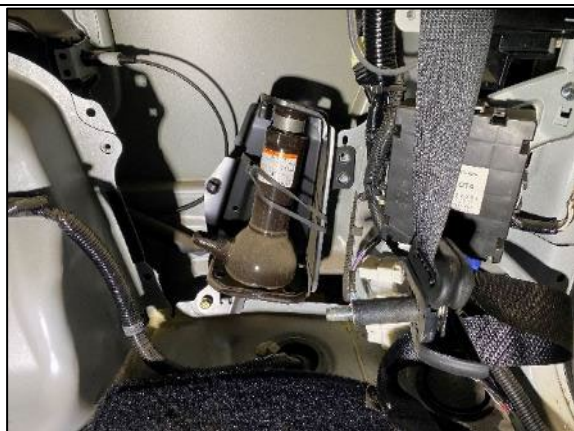
STEP 3.3.9 CONNECT TO 90 DEGREE ELBOW ON DRAWER FRONT FASCIA PREVIOUSLY INSTALLED AND CONNECT TO HOSE. REASSABLE DRAWER FRONT AND DRAWERS.

3.4 JBA-CB301 5L AIR TANK MOUNTING BRACKET

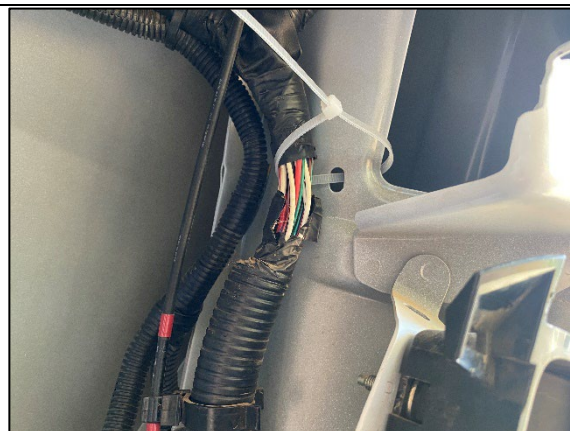


STEP 3.4 IF FITTING A TANK, REFER TO PIC FOR INSTALL AND HOSE ORIENTATIONS. FOLLOW STEPS FOR JBA 5L TANK BRACKET IN CONJUNCTION WITH THESE INSTRUCTIONS.

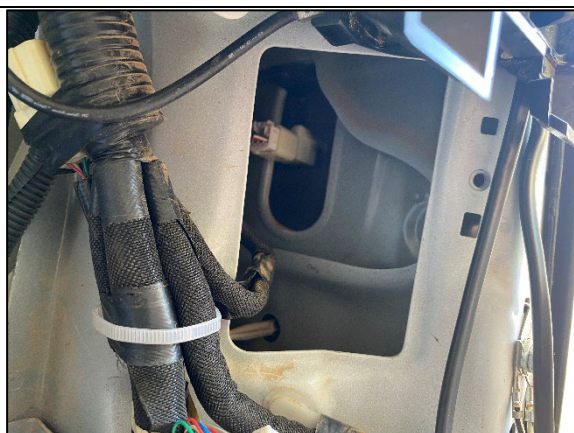
4. INSTALLING THE BRACKET AND COMPRESSOR INTO THE VEHICLE



STEP 4.1 REMOVE 3 X SCREWS FROM VEHICLE JACK AND REMOVE JACK COMPLETELY FROM THE VEHICLE.

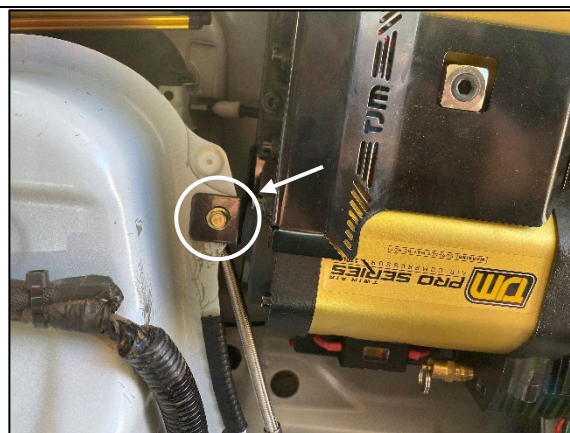


STEP 4.2 REMOVE BODY CLIP FROM TOYOTA LOOM ON TOP RIGHT HAND SIDE (CUT TAPE AND FULLY REMOVE AS SHOWN) RUN A CABLE TIE THROUGH THE SLOT IN BODY AS SHOWN.



STEP 4.3 RUN A SECOND CABLE TIE AROUND THE TOYOTA LOOM MID-BOTTOM RIGHT AS SHOWN.

THESE STEPS ARE CRITICAL TO ENSURE THE ORIGINAL TOYOTA LOOM IS KEPT AWAY FROM THE TJM COMPRESSOR MOTORS AS THESE CAN GET VERY HOT DURING OPERATION AND HAVE POTENTIAL TO MELT TOYOTA LOOM. A MINIMUM 1-2 CM CLEARANCE IS REQUIRED.

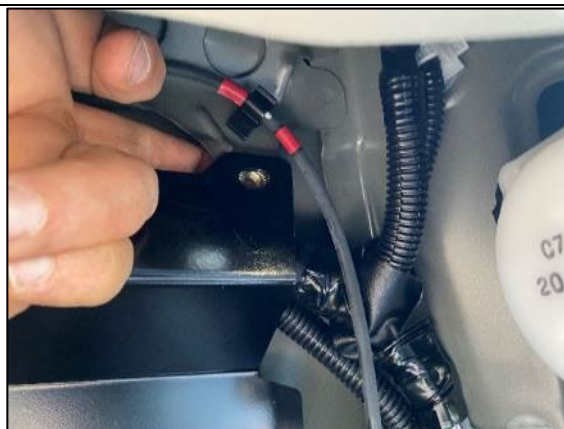


STEP 4.4 LIFT THE COMPRESSOR INTO PLACE AND INSTALL M6 X 20 SEMS SCREW INTO THE BOTTOM LEFT MOUNTING LOCATION AS SHOWN. ONLY TIGHTEN FINGER TIGHT AT THIS STAGE FOR ADJUSTMENT LATER. THIS STEP POSITIONS THE BRACKET AND TAKES THE WEIGHT.

DO NOT INSTALL THE TOP SCREWS FIRST AS THE WEIGHT OF THE COMPRESSOR WILL CAUSE THE BRACKET TO STRETCH AND MAKE THE BOTTOM HOLES HARDER TO ALIGN.



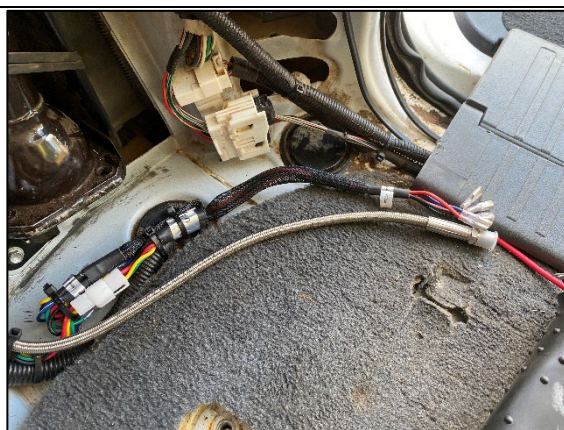
STEP 4.5 INSTALL THE BOTTOM RIGHT M6 X 20 MOUNTING SCREWS FINGER TIGHT. THESE LOCATIONS CAN BE DIFFICULT TO ACCESS AND IT CAN BE EASIER TO COME FROM THE SECOND ROW OF SEATS POSITION RATHER THAN FROM THE TAILGATE POSITION.



STEP 4.6 INSTALL THE TOP M6 X 20 MOUNTING SCREWS INTO THE BODY MOUNT SLOTS REMOVED IN STEP 4.2 ABOVE. IT CAN BE EASIER TO FEED THE M6 HEX SERR FLANGE NUT IN FROM BEHIND FIRST, LINE UP CENTRALLY AND HAND SCREW M6 X 20 SEMS TO GET STARTED.



STEP 4.7 ONCE COMPRESSOR IS POSITIONED, FULLY TIGHTEN ALL 5 X M6 SCREWS. CONTINUE TO WIRE AS PER TJM COMPRESSOR INSTALLATION INSTRUCTIONS.



STEP 4.8 IF FITTING A DRAWER FRONT AIR/SWITCH OUTLET CONFIGURATION (KIT3,KIT5) RUN HOSE AND WIRING LOOM DOWN AND POSITION READY FOR QUARTER PANEL RE-INSTALLATION AS SHOWN. REFER TO STEPS 3.3.8/9 FOR CONNECTION INFO.



STEP 4.9 CYCLE COMPRESSOR TO TEST FOR ANY LEAKS. ADJUST ANY HOSES/FITTING AS REQUIRED. DOUBLE CHECK CLEARANCE OF MAIN LOOM AS PER STEP 4.3 ABOVE AND ADJUST AS NECESSARY.



STEP 4.10 RE INSTALL RE QUARTER PANEL AND SEATS/DRAWER SYSTEM, WIPE DOWN AND COMPLETE INSTALL.