

PRODUCT- JBA SLIM LINE BATTERY TRAY UNDER FLOOR

VEHICLE- TOYOTA 250 SERIES PRADO 11/24+

PART NUMBER- JBA-BT422F, JBABT422F-KIT1

ESTIMATED FIT TIME

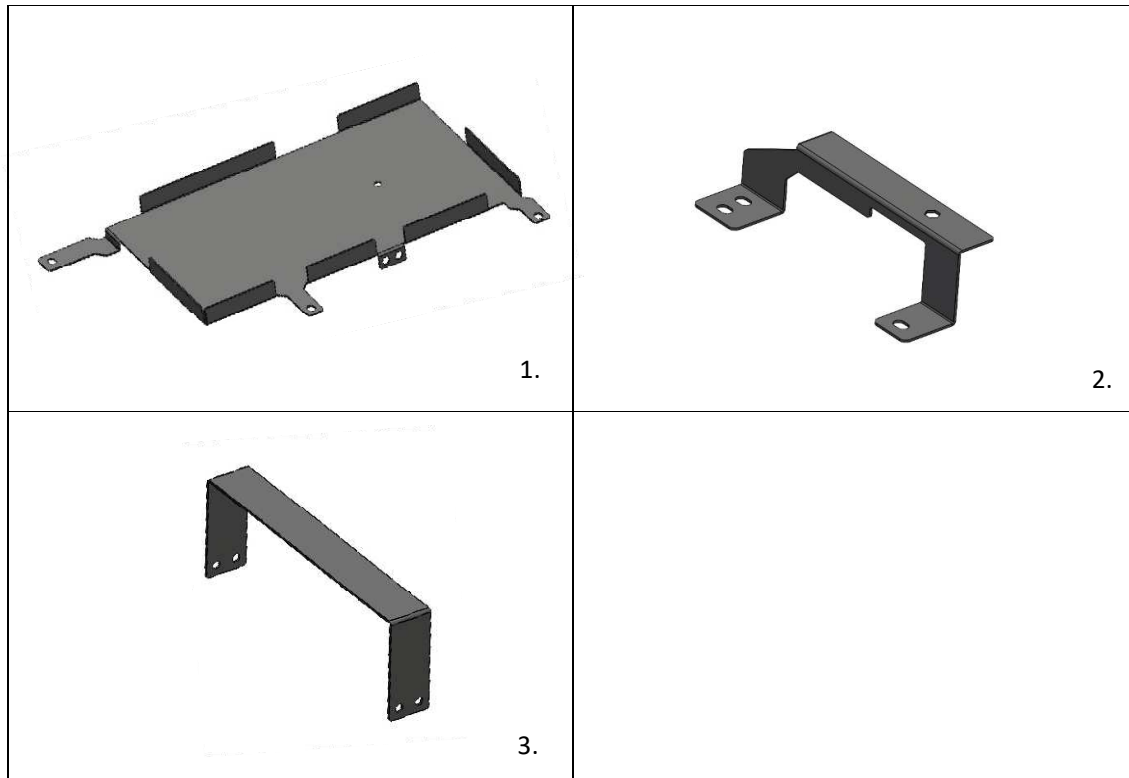
- | | |
|--|------------|
| - PREPARATION AND MOUNTING OF BATTERY TRAY | 30 MINS |
| - PREPARATION AND MOUNTING OF DCDC BRACKET (IF REQUIRED) | 30 MINS |
| - REMOVAL AND REFITMENT OF SEAT AND INTERIOR PANELS | 60-75 MINS |
| - REMOVAL AND RE-FIT OF DRAWER SYSTEM (IF REQUIRED) | 60-90 MINS |
| - ELECTRICAL WIRING AND FITTING OF OUTLETS/ACCESSORIES* | 90+MINS |

* WIRING TIME WILL VARY CONSIDERABLY DEPENDING ON INDIVIDUAL SETUP.

IMPORTANT NOTES

- READ INSTRUCTIONS CAREFULLY PRIOR TO FITMENT
- ENSURE THAT ALL TRIM CLIPS ARE REMOVED FROM THE VEHICLE WHEN REMOVING PANELS AND RE-INSERTED BACK INTO THE PANELS BEFORE RE-INSTALLATION (SEE STEPS 1.4.1-1.4.3).
- REFER TO INDIVIDUAL PRODUCT REQUIREMENTS BATTERY AND DCDC CHARGER FOR WIRING SPECIFICATIONS

KIT CONTENTS

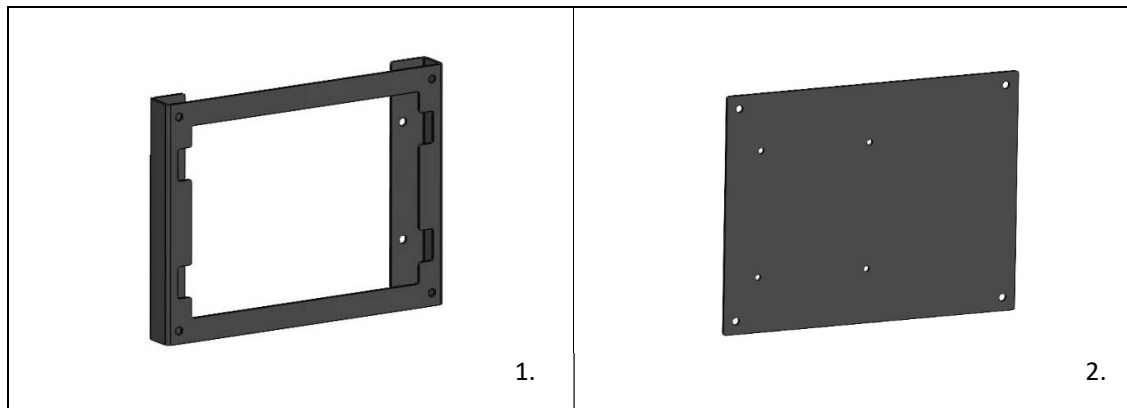


ITEM	DESCRIPTION	PART NO.	QTY
1	JBA 250 PRADO SLIM LINE BATTERY TRAY	10-BT422F-A	1
2	JBA 250 PRADO BATTERY TRAY SUPPORT BRACKET	10-BT422F-B	1
3	JBA 250 PRADO BATTERY TRAY STRAP	10-BT422F-C	1
4	M6 X 16MM HEX FLANGED SERRATED SET SCR GR 8.8 ZP	B12 060168.8FSZP	5
5	M6 X 16MM CSK HD PHIL M/T Z/P NYLON PATCH	X37 0616CPZPN	1

OPTIONAL KIT PARTS

JBA-BT422F-KIT1

JBA KIT- 250 PRADO SLIM LINE BATTERY TRAY WITH QUARTER PANEL DCDC MOUNTING BRACKET



ITEM	DESCRIPTION	PART NO.	QTY
1	JBA 250 PRADO DCDC MOUNTING BRACKET REAR	10-BD422Q-A	1
2	JBA 250 PRADO DCDC MOUNTING BRACKET COVER	10-BD422Q-B	1
3	M6 X 16MM CSK HD PHIL M/T Z/P NYLON PATCH	X37 0616CPZPN	4
4	M6 HEX SERR FLANGE NUT ZP	N24 06ZP	4
5	M4 X 12MM CSK HD PHIL M/T GR 304 S/S	X37 0412CP304	4

1. PREPARING THE VEHICLE

1.1 7 SEAT VARIANTS (REFER TO 1.2 BELOW FOR 5 SEAT VARIANTS)



STEP 1.1.1 START AT THE REAR PASSENGER SIDE DOOR AND FOLD THE PASSENGER SECOND ROW OF SEATS FORWARD AS SHOWN.



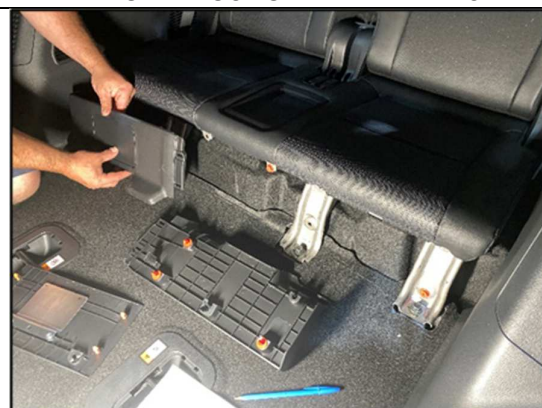
STEP 1.1.2 REMOVE DOOR WELL PLASTIC TRIM COVER AND SET ASIDE. CHECK FOR ANY TRIM CLIPS LEFT IN THE VEHICLE.



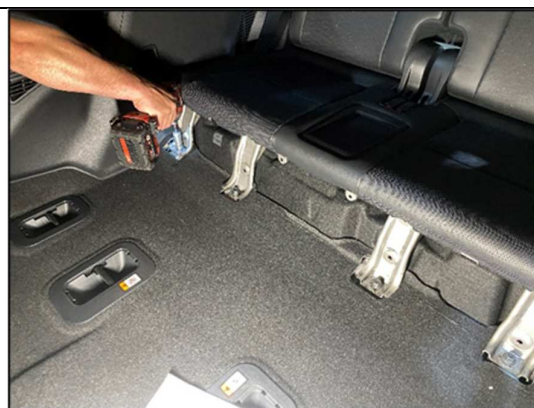
STEP 1.1.3 REMOVE 14MM SEAT BELT BOLT. CAREFULLY LOOP THE BELT OVER GRAB HANDLE TO KEEP OUT OF THE WAY IF DESIRED.



STEP 1.1.4 REMOVE THE CENTRE SECTION COVER OF THE REAR SEAT. CHECK FOR ANY TRIM CLIPS.



STEP 1.1.5 REMOVE THE OUTER SECTIONS NEXT (IT IS NOT REQUIRED TO REMOVE THE INNER SECTION OF THE DRIVERS SIDE PANEL).



STEP 1.1.6 REMOVE THE 4 X 14MM BOLTS EXPOSED AND SET ASIDE.



STEP 1.1.7 MOVE TO THE REAR OF THE VEHICLE AND REMOVE THE REAR STORAGE BOX.



STEP 1.1.8 REMOVE THE LEFT AND RIGHT TRIM PANELS.



STEP 1.1.9 REMOVE THE LEFT AND RIGHT PLASTIC STORAGE SECTIONS. THE DRIVERS SIDE LIFTS UP WITH TRIM CLIPS, THE PASS HAS TABS (FOLLOW INSTRUCTIONS ON PANEL)



STEP 1.1.10 REMOVE THE REAR PLASTIC TRIM. CHECK FOR ANY TRIM CLIPS LEFT IN THE VEHICLE.



STEP 1.1.11 REMOVE THE PLASTIC TRIM COVER AS SHOWN. CHECK FOR TRIM CLIPS.



STEP 1.1.12 REMOVE 4 X 14MM BOLTS EXPOSED AS SHOWN AND SET ASIDE.



STEP 1.1.13 REMOVE THE 2 BODY CLIPS FOR THE SEAT WIRING LOOM AND UNCLIP AS SHOWN.



STEP 1.1.14 FOLD THE SEAT DOWN AND LEFT OUT OF VEHICLE (2 PEOPLE IS BEST TO ENSURE TRIM ISN'T SCRATCHED WHEN LIFTING OUT)

1.2 5 SEAT VARIANTS (REFER TO 1.1 ABOVE FOR 7 SEAT VARIANTS)



STEP 1.2.1 START AT THE REAR PASSENGER SIDE DOOR AND FOLD THE PASSENGER SECOND ROW OF SEATS FORWARD AS SHOWN.



STEP 1.2.2 REMOVE DOOR WELL PLASTIC TRIM COVER AND SET ASIDE. CHECK FOR ANY TRIM CLIPS LEFT IN THE VEHICLE.



STEP 1.2.3 REMOVE 14MM SEAT BELT BOLT. CAREFULLY LOOP THE BELT OVER GRAB HANDLE TO KEEP OUT OF THE WAY IF DESIRED.



STEP 1.2.4 MOVE TO THE REAR OF THE VEHICLE AND PUL OUT THE LEFT, RIGHT AND CENTRE TRIM SECTIONS AS SHOWN.



STEP 1.2.5 REMOVE PLASTIC TRIMS EXPOSED. PASS SIDE HAS 2 X TABS (FOLLOW INSTRUCTIONS ON PANEL) DRIVERS SIDE POPS UP USING TRIM CLIPS.



STEP 1.2.6 REMOVE BOTTOM TRIM SECTIONS AS SHOWN. CHECK FOR ANY TRIM CLIPS.



STEP 1.2.7 REMOVE THE REAR PLASTIC TRIM COVER. THESE CAN BE TIGHT, BE CAREFUL NOT TO DAMAGE WHEN REMOVING. CHECK FOR ANY TRIM CLIPS.



STEP 1.2.8 REMOVE THE STORAGE COMPARTMENT PULLING UP TO POP THE TRIM CLIPS.



STEP 1.2.9 LIFT THE PLASTIC COVER ON THE TIE DOWN USING A SMALL FLAT SCREWDRIVER TO EXPOSE THE BOLT AND REMOVE USING 10MM.



STEP 1.2.10 REMOVE THE COVER PANEL AND SET ASIDE ON A SOFT CLEAN SURFACE.



STEP 1.2.11 REMOVE THE PLASTIC TRIM COVER AS SHOWN. CHECK FOR TRIM CLIPS.



STEP 1.2.12 MOVE THE SECOND ROW OF SEAT SECTION AND POP OPEN THE COVERS ON THE TRIM SECTION AS SHOWN. HAND UNSCREW THE PLASTIC NUTS EITHER SIDE AS SHOWN.



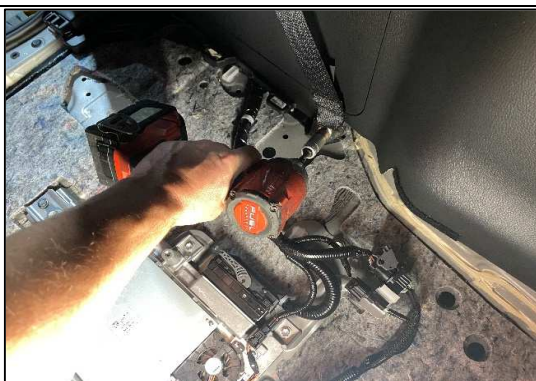
STEP 1.2.13 REMOVE THE LAST SECTION OF THE PLASTIC COVER. CHECK FOR ANY TRIM CLIPS.



STEP 1.2.14 UNDO 14MM BOLTS ON THE STEEL COVER PLATE AND REMOVE FROM THE VEHICLE CAREFULLY ENSURING NOT TO SCRATCH THE VEHICLE.

1.3 OPTIONAL STEPS FOR WIRING AND DCDC MOUNTING BRACKET

THE FOLLOWING STEPS ARE OPTIONAL BUT WILL MAKE WIRING OF THE BATTERY AND DCDC MOUNTING BRACKET EASIER



STEP 1.3.1 REMOVE 14MM SEAT BELT BOLT IN REAR OF BOOT AS SHOWN. AGAIN, IF DESIRED CAN CAREFULLY LOOP THE SEAT BELT UP ONTO GRAB HANDLE TO KEEP OUT OF THE WAY.



STEP 1.3.2 CAREFULLY POP OPEN PLASTIC COVER USING SMALL FLAT SCREWDRIVER AND REMOVE 10MM BOLT EXPOSED.



STEP 1.3.3 REMOVE PLASTIC COVER BY HAND TURNING 90 DEGREES AND PULLING OUT. REMOVE 10MM BOLT EXPOSED.



STEP 1.3.4 FLIP UP PLASTIC COVER USING SMALL FLAT SCREWDRIVER AND REMOVE 10MM BOLT EXPOSED. PULL OUT TIE DOWN.



STEP 1.3.5 BEGIN GENTLY PULL BACK QUARTER PANEL POPPING THE TRIM CLIPS. WORK YOUR WAY ALONG THE TOP UNDER THE WINDOW.



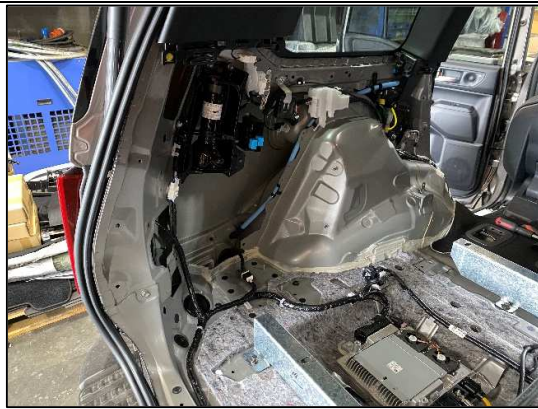
STEP 1.3.6 UNCLIP INTERIOR LIGHT PRESSING DOWN THE TAB AND GENTLY PULLING.



STEP 1.3.7 MOVE BACK TO SECOND ROW SEAT POSITION AND BEGIN PULLING BACK THE QUARTER PANEL.



STEP 1.3.8 REMOVE THE USB POWER WIRING LOOM AS SHOWN.



STEP 1.3.9 REMOVE THE QUARTER PANEL COMPLETELY FROM VEHICLE AND SIT ON A SOFT CLEAN SURFACE.

1.4 REFERENCE PICS FOR TRIM CLIPS



STEP 1.4.1 REFERENCE PICS FOR TRIM CLIP (EXAMPLE ONLY). AS YOU ARE REMOVING PANELS, KEEP NOTICE OF ANY CLIPS THAT HAVE REMAINED IN THE VEHICLE- NORMALLY WHITE OR GREEN AS SHOWN.



STEP 1.4.2 USE A TRIM CLIP REMOVER TO POP OUT OF THE VEHICLE AS SHOWN.



STEP 1.4.3 RE-INSERT INTO THE PLASTIC TRIM PANEL LOCATION. THEY WILL NORMALLY SLIDE IN AND POP INTO POSITION. THESE STEPS WILL ENSURE AN EASIER RE-INSTALLATION OF THE PANELS LATER.

2.1 INSTALLATION OF BATTERY TRAY



STEP 2.1 REMOVE 3 X BOLTS FROM THE TOYOTA BATTERY SUPPORT BRACKET AND SIT ASIDE.



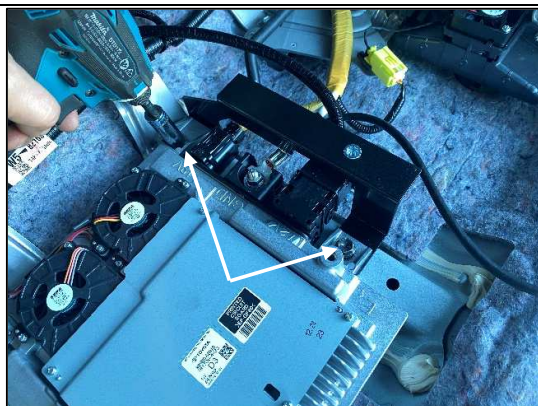
STEP 2.2 REMOVE THE M10 BOLT FROM THE FRONT BRACKET ON THE COMPUTER.



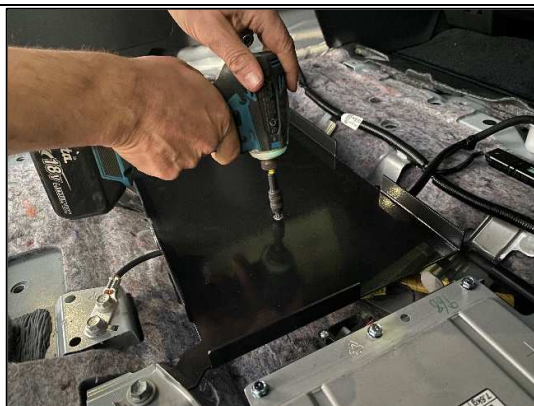
STEP 2.3 REMOVE THE FRONT M10 BOLT FROM THE PASSENGER SIDE OF THE COMPUTER.



STEP 2.4 REMOVE THE 2 X BOLTS FROM THE RIGHT HAND SIDE OF THE COMPUTER.



STEP 2.5 SLIDE IN JBA-BT422F-B SUPPORT BRACKET UNDER THE COMPUTER AND RE FASTEN BOLTS INTO ORIGINAL POSITIONS.



STEP 2.6 POSITION THE BATTERY TRAY INTO PLACE AS SHOWN. INSERT M6 X 16 CSK HEAD SCREW INTO CENTRE POSITION OF TRAY FINGER TIGHT TO LOCATE THE TRAY CENTRALLY.



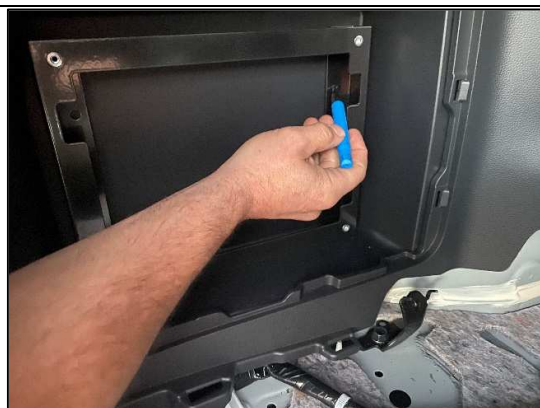
STEP 2.7 INSERT M6 X 16 FLANGE HEAD BOLT INTO THE REAR OF THE TRAY ALIGNING WITH THE CAPTIVE NUT IN THE SUPPORT BRACKET. RE FASTEN THE ORIGINAL BOLTS REMOVED IN STEPS 2.1-2.3 INTO CAPTIVE POSITIONS AND FULLY TIGHTEN THE TRAY.



STEP 2.8 POSITION THE BATTERY INTO THE TRAY WITH THE TERMINALS TOWARDS THE PASS SIDE FRONT. CLAMP THE BATTERY USING JBA-BT422F-6 BATTERY STRAP USING 4 X M6 X 16 FLANGE BOLTS AS SHOWN.

3 INSTALLING OPTIONAL JBA DCDC QUARTER PANEL MOUNT BRACKET

IT IS SUGGESTED TO REMOVE THE PASSENGER SIDE REAR QUARTER PANEL FOLLOWING STEPS 1.3.1-1.3.9 ABOVE TO MAKE WIRING OF THE BATTERY AND INSTALL OF DCDC EASIER



STEP 3.1 SIT JBA-BD422Q-A REAR MOUNTING BRACKET IN THE SIDE POCKET AND MARK THE 4 X MOUNTING HOLES AS SHOWN.



STEP 3.2 DRILL OUT THE 4 X MARKED HOLES TO 8MM.



STEP 3.3 FASTEN THE BRACKET USING M6 X 16 CSK FROM THE REAR ENSURING THE NUTS ARE FASTENED FROM THE INSIDE OF THE SIDE POCKET AS SHOWN. (THIS STEP IS ESSENTIAL IF FITTING A COMPRESSOR BEHIND THE POCKET TO ENSURE THE TWO PRODUCTS DON'T HIT.



STEP 3.4 INSTALL YOUR CHOSEN DCDC CHARGER TO THE BRACKET USING THE PRE-DRILLED POSITIONS. NOTE- THE BRACKET CAN BE FLIPPED TO MOUNT THE DCDC ON EITHER LEFT OR RIGHT SIDE. MOUNT ANY OTHER ACCESSORIES SUCH AS FUSE HOLDERS, ANDERSON PLUGS ETC AND DRILL PANEL TO PASS WIRING THROUGH AS REQUIRED.



STEP 3.5 RE-ASSEMBLE THE FRONT COVER TO THE REAR MOUNTING BRACKET USING 4 X M4 X 12 CSK SCREWS.



STEP 3.6 NEATLY CABLE TIE ALL WIRES AND RE FIT REAR QUARTER PANEL AND SEATS.